



联系我们 / Contact Us

公司名称：苏州为山之环境技术有限公司

Suzhou Weishans Climate Technologies Co.,Ltd

公司官网 / Web: www.weishans.com

地址：江苏省苏州市相城区黄埭镇咏春科技园

Address: Yongchun Science and Technology Park, Huangdai Town, Xiangcheng District, Suzhou City, Jiangsu Province

联系人Contact：王先生Mr.Wang:13771888067, 李先生Mr.Li:15995875226, 陈女士Ms.Chen:13640429967, 王先生Mr.Wang:18896534978



高效涡旋压缩机

High Energy Efficiency Scroll Compressor

热泵烘干应用产品手册

Product Manual For Heat Pump & Stoving Application

免责声明

技术数据在印刷前已经校对过，印刷之后有再更新的可能。如有对某一参数确认的需求，请联系苏州为山之环境技术有限公司。为山之对参数中可能存在的差错概不承担任何责任，为山之保留自行改变其产品而不预先通知的权利。

Disclaimer

Our technical data have been checked before printing, but it is possible for data to be updated after printing. If you need to confirm a certain parameter, please contact Suzhou Weishans Climate Technology Co., Ltd. Weishans will not take any responsibilities for any possible errors in the parameters and reserve the right to change its products without prior notice.

为山者

积土成山，事当有为不为

为山者，当以九仞为目标，坚韧前行

居谷不弃，据高无傲，以余力尽余志

为山者，当持仁心，聚仁人志士以作为

仁德宽厚，虚怀若谷，度己度人，度可度之人

为山者智而不乱智，谋而不全谋

为山者实为治军，将即将，身先士卒，令必行，士必勤勇，功当巨赏

为山者胜于人，乃心胜于人，非物胜于人也

为山者，虽积跬步箕土，乃成伟山

WEISHANS

To build mountain with small amounts of earth, You would select what to do and what not to do.

To be WEISHANS, You should have a high goal, go forward no matter what difficulty to meet, No give up when you low,

No pride when you high, Do what you can do for the capable goal.

To be WEISHANS, You should have a heart like god, Collect kind and upright men to do something right, kind god feeling to others , mind breadth, sublime oneself and others ,and sublime the men who will sublime.

To be WEISHANS, should be smart but only smart on the right direction, and have astuteness on the right place.

To be WEISHANS, Just like build an army, General should be exactly like a leader with active and positive Behavior, order must have good result and active feedback, soldiers must be active to order and work hard, great reward for great job.

To be WEISHANS, They defeat others, They are so strong in mind not on the treasure.

To be WEISHANS, Even with small steps to reach peak , Even collect small earth to build great mountain.

目录Catalog

公司简介 01
About us

产品特点 04
About Product

关键技术及创新 05
Characters and Advantages

命名规则 07
Nomenclature

应用范围 08
Application Range

技术参数 09
Specification

制热量 21
Heating Capacity

外形尺寸 63
Dimensional Information

苏州为山之环境技术有限公司

苏州为山之环境技术有限公司成立于2018年6月，坐落于工业发达的历史名城苏州，专注于开发节能环保型压缩机，是一家创新型科技企业。为山之研发的涡旋式热泵压缩机核心技术已取得重大突破，并成功应用于多个领域，包括但不限于工业制冷、商用热水、工业蒸汽、农业烘干、制冷工程、精密空调、轨道交通制冷、转轮除湿及工业余热回收等。

公司研发的系列热泵蒸汽涡旋压缩机以及国内率先推出的防爆系列涡旋压缩机，显著拓展了涡旋压缩机的应用范围。公司自主研发的强力增焓技术也进一步扩大了压缩机的运行范围，使得在常温条件下使用同一工质实现高效蒸汽成为现实。

公司拥有先进的自动化生产线和高精度检测与加工设备，创新工艺流程，具备年产10万台涡旋压缩机的组装生产能力，产品覆盖从2匹至25匹。公司产品通过了CCC、CE、CB、ROHS & REACH和ISO 9001等多项国际认证。

公司高度重视知识产权保护，至今已申请41项知识产权，其中包括13项发明专利（5项已获授权）、27项实用新型专利（21项已获授权）和1项软件著作权。公司荣获江苏省民营科技企业和国家级高新技术企业称号。

公司注重质量管理体系和信息化建设，秉持以人为本的理念，组建了一支具有竞争力的人才队伍，激发员工的积极性和创造力，不断提高运营效率。公司秉承创新、诚信的理念，致力于为客户创造更多价值，携手实现共赢。

展望未来，公司将继续加大研发投入，致力于为客户提供绿色环保的热泵及冷冻压缩机解决方案，以减少全球碳排放为使命，为构建绿色地球家园贡献力量。

www.weishans.com

Suzhou Weishans Climate Technologies Co., Ltd

Suzhou Weishans Climate Technology Co., Ltd was established in June 2018, it is located in Suzhou with developed industry and long history city, and focuses on the development of energy-saving and environment protection compressors. It is an innovative technology enterprise. The core technology of the scroll heat pump compressors developed by Weishans has made significant breakthroughs and has been successfully applied in multiple fields, including but not limited to industrial refrigeration, commercial hot water, industrial steam, agricultural drying, refrigeration engineering, precision air conditioning, rail transit refrigeration, rotary wheel dehumidification and industrial waste heat recovery, etc. The series of heat pump steam scroll compressors developed by the company and the explosion-proof series of scroll compressors first launched in China have significantly expanded the application range of scroll compressors. The company's independently developed strong enthalpy increase technology has also further expanded the operating range of the compressor, making it possible to achieve efficient steam using the same working fluid under normal temperature conditions.

The company owns advanced automated production lines and high-precision testing and machining equipments, innovated technological process, and has an annual assembly production capacity of 100,000 scroll compressors, with products covering the range from 2HP to 25HP. The company's products have passed multiple international certifications including CCC, CE, CB, ROHS & REACH and ISO 9001.

The company attaches great importance to the protection of intellectual property rights and has applied for 41 intellectual property rights so far, including 13 invention patents (5 have been authorized), 27 utility model patents (21 have been authorized) and 1 software copyright. The company has been awarded the titles of Jiangsu Private Technology Enterprise and National High-tech Enterprise.

The company attaches great importance to the quality management system and information construction, adheres to the people-oriented concept, and has formed a competitive talent team to stimulate the enthusiasm and creativity of employees and continuously improve operational efficiency. The company adheres to the concepts of innovation and integrity, and is committed to creating more value for customers and achieving win-win results together.

Looking forward to the future, the company will continue to increase investment in research and development, and is committed to providing customers with green and environmentally heat pump and refrigeration compressor solutions. With the mission of reducing global carbon emissions, it will contribute to building a green Earth home.



OUR VISION

企业愿景

为山之遵循“求精不求巧，求本不求华”的产品理念，把“为山”打造成国内外知名品牌。

WE AIM TO MAKE "WEISHAN" THE FIRST-CLASS INTERNATIONAL BRAND. WE ALWAYS FOLLOW THE THINKING "TO ACHIEVE PERFECTION WITHOUT INGENUITY, SEEKING FOR ORIGIN WITHOUT REFINEMENT."

OUR MISSION

企业使命

以“九仞”为目标，坚韧前行；居谷不弃，据高无傲！

"JIUREN" IS OUR AIM. WE WILL MOVE FORWARD TOUGHLY. WE WILL NEVER GIVE UP EVEN IN DOWNS AND NEVER BE ARROGANT WHEN IN UPS.

SERVICE AIM

服务宗旨

顾客第一、品质第一、服务第一、持续改进、回报社会

CUSTOMERS FIRST, QUALITY FIRST, SERVICE FIRST, KEEPING IMPROVING, REPAYING SOCIETY

Build a Nine-ten Mountain
Forge Ahead

为山九仞 砥砺前行



ABOUT PRODUCT 产品特点

“为山”牌涡旋压缩机性能优良，突出的特点有：

1. 国产替代：拥有自主知识产权，且与国外知名企业的同等技术水平的产品具有良好的互换性。
2. 重点开发的中高功率范围12匹及以上的全封闭压缩机新产品，获得良好的市场应用口碑。
3. 针对不同的冷媒设计多种涡旋盘，适用范围广，WW系列压缩机在烘干机组上冷凝温度最高可达85摄氏度。
4. 能效比高，入围北极熊创新产品奖前三甲，是节能机组产品。

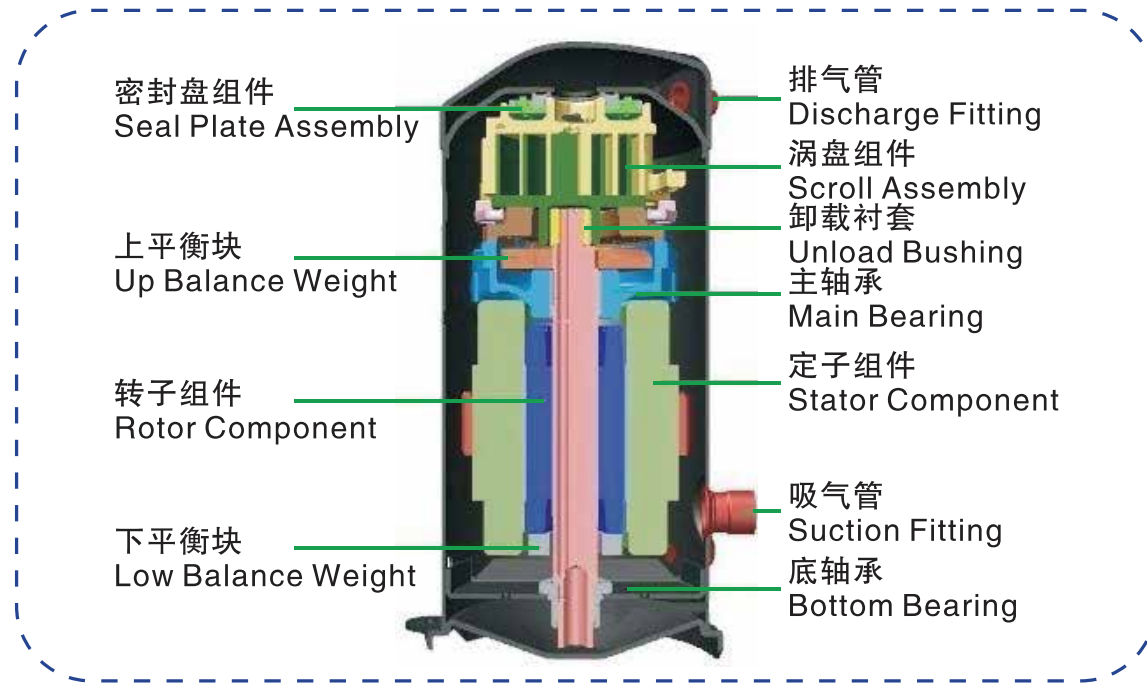
"Weishan" brand scroll compressors have excellent performance, and the outstanding features are as below:

1. *Localization substitution: independent intellectual property rights; good interchangeability with products of the same technical level as well-known foreign companies.*
2. *Stress-developed ≥ 12 HP hermetic compressors in the medium and high power range and get good market application reputation.*
3. *The products are designed with multiple scrolls for different refrigerants and have a wide application range. The condensing temperature of WW series can reach 85°C on the drying unit.*
4. *The products have high energy efficiency ratio are selected in the top three of the Polar Bear Innovative Product Award and are the energy-saving units.*

关键技术及创新

Characters and Advantages

关键技术及创新 CHARACTERS AND ADVANTAGES



关键技术及创新

Characters and Advantages

关键技术及创新 CHARACTERS AND ADVANTAGES

为山之的涡旋压缩机为热泵，空调，冷水机及冷冻冷藏等应用提供了出众的解决方案，涡旋压缩机是高可靠性，高能效比，紧凑性系统设计的理想选择。为山系列涡旋压缩机可提供2~25HP的产品，其适用的制冷剂包括R410A, R22, R407C, R134a等

Weishans' scroll compression technology provide an outstanding solution for Heat pump, air conditioner, chiller and refrigeration applicaiton. Scroll compressors are an ideal choice with high reliability, high EER and compact system design. The scroll compressors of Weishan

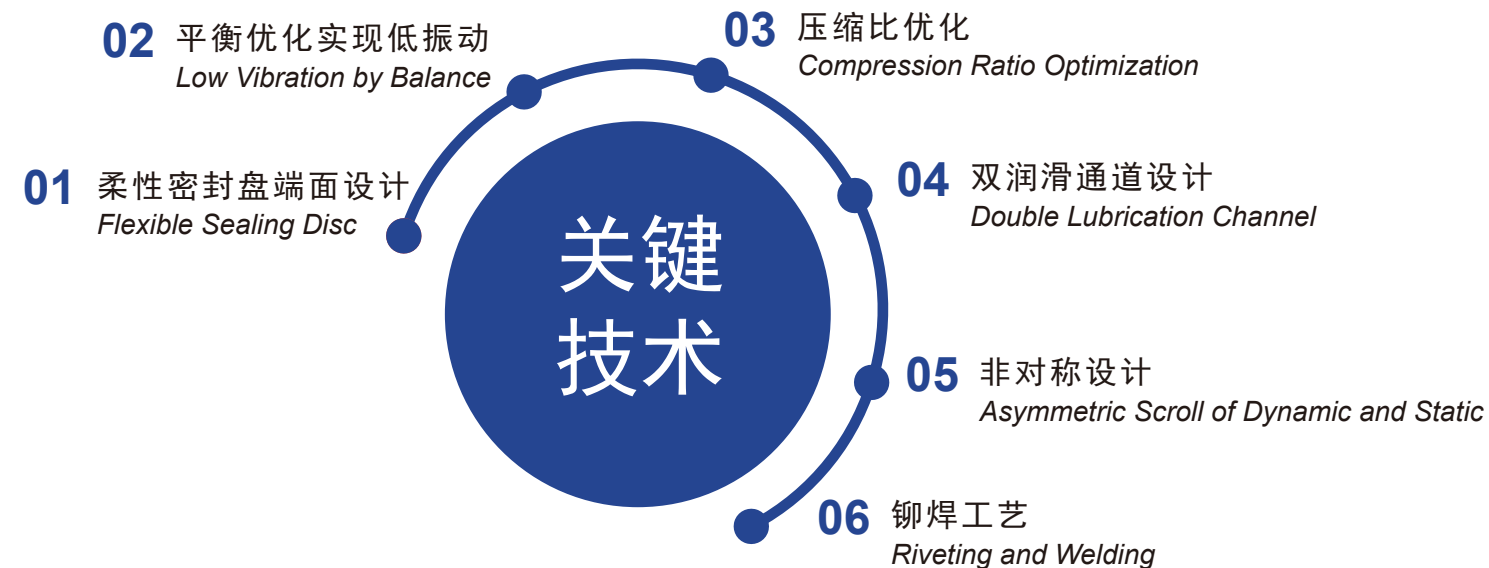
series can provide 2HP~25HP products, the applicable refrigerants include R410A, R22,R407C, R134a ETC.

制热量数据 Capacity Data

本样本所列压缩机制冷量数据, 电源频率50Hz (电机同步转速2900rpm)。当压缩机在60Hz频率 (电机转速3500rpm) 运行时, 制冷量以及输入功率相应约增加20%。压缩机不宜在应用范围外使用。

The capacity data of scroll compressors listed in this catalogue, power frequency is 50 Hz (Synchronous speed of motor 2900 rpm). When the compressors are operated with 60Hz (the speed of motor 3500 rpm), the capacity and input power are correspondingly increased about 20%. The compressors should not be used beyond the application range.

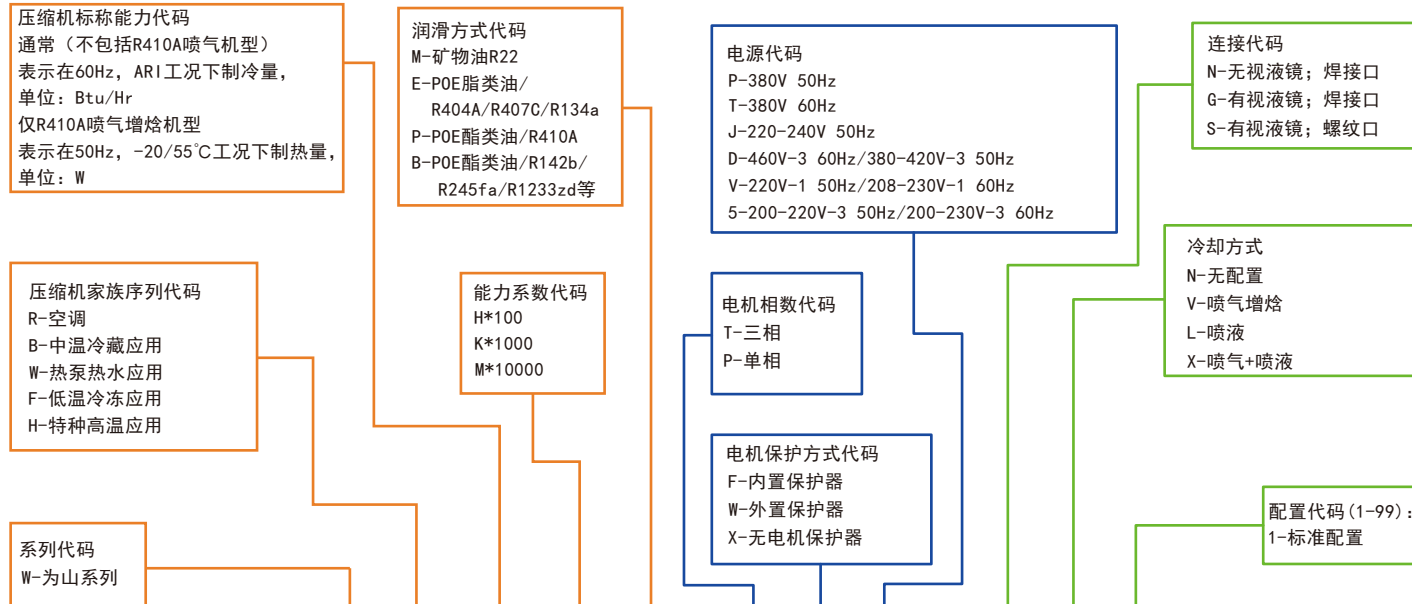
Cooling capacity data of compressor listed in this sample, power frequency: 50Hz(synchronous motor speed: 2900rpm)



命名规则

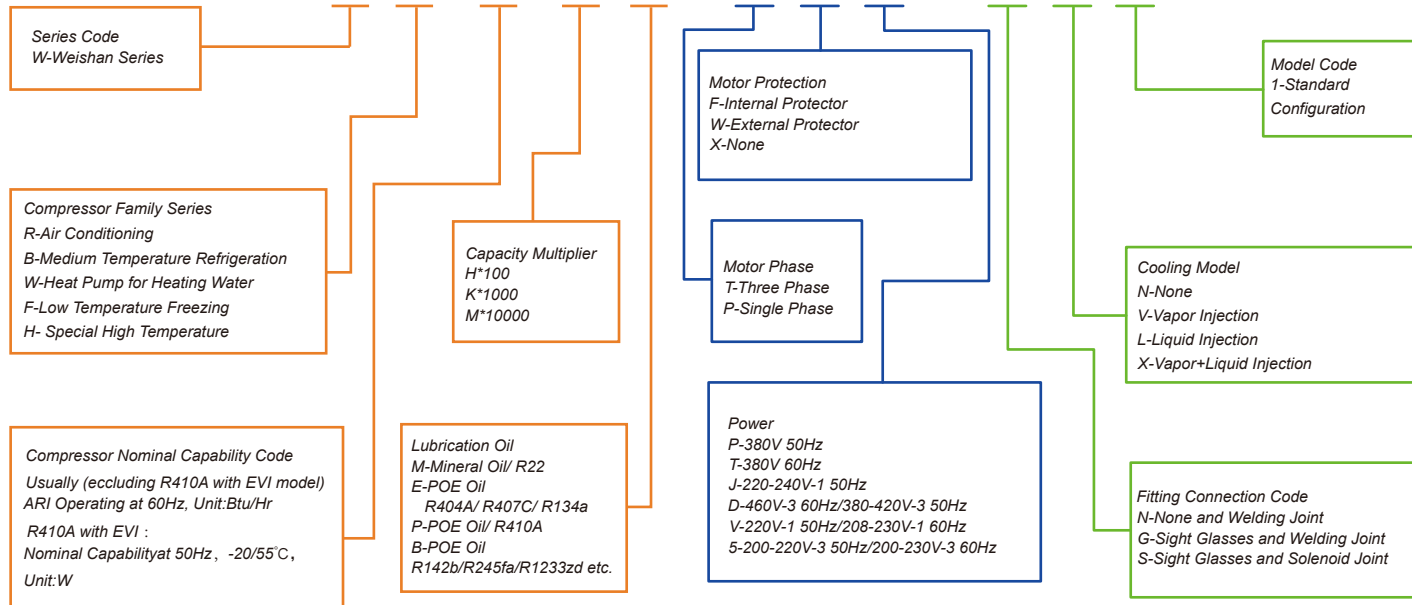
Nomenclature

命名规则 NOMENCLATURE



WW 138 K E - T F D - G N 1

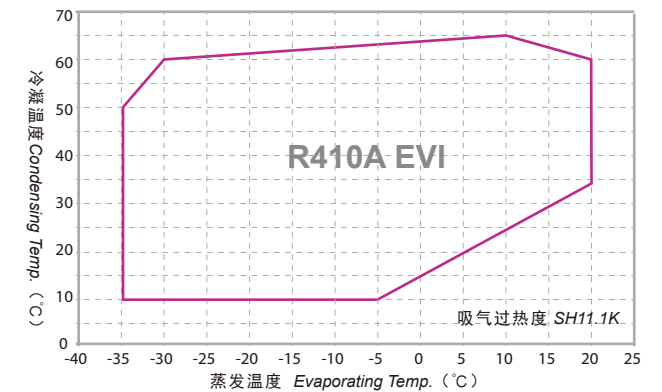
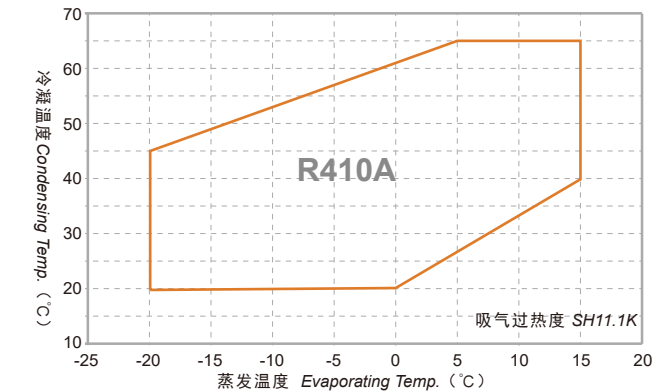
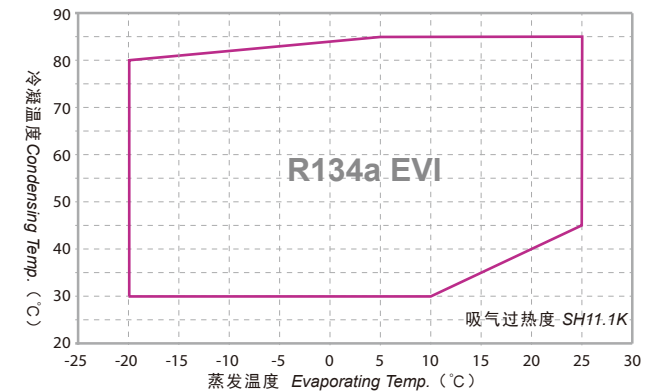
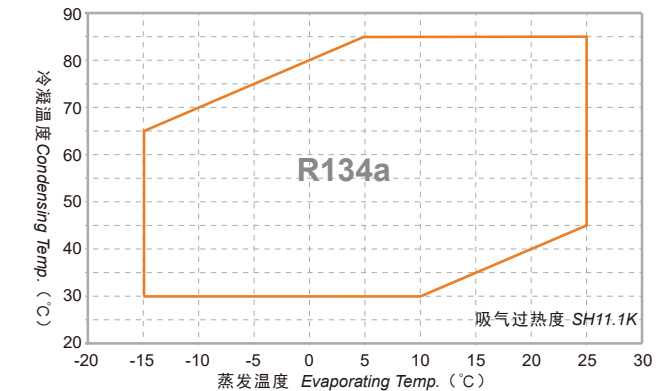
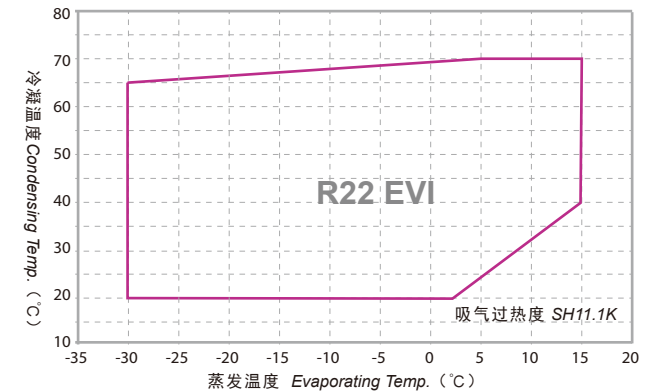
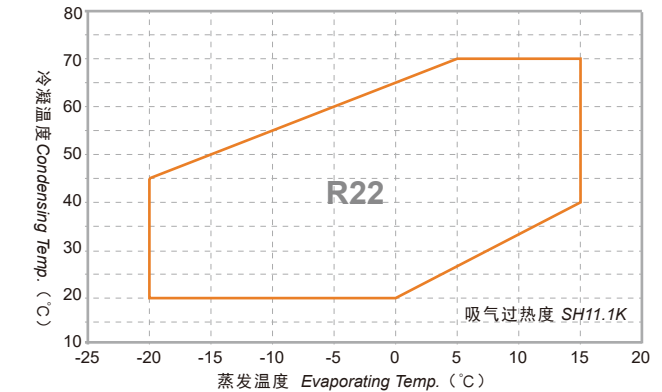
R410A喷气增焓机型 R410A with EVI:
WW 286 H P - T F D - G V 1



应用范围

Application Range

应用范围 APPLICATION RANGE



技术参数 Specifications

WW R22 不带喷气增焓 W/O EVI

技术参数 SPECIFICATIONS

型号 Model	WW28KM-TFD-GN1	WW34KM-TFD-GN1	WW48KM-TFD-GN1	WW61KM-TFD-GN1	WW72KM-TFD-GN1	WW79KM-TFD-GN1	WW94KM-TFD-GN1	WW108KM-TFD-GN1	
电制 Motor Power	380-420V/3~50Hz or 460V/3~60Hz								
名义功率 Nominal Power (HP)	2	3	4	5	6	7	8	9	
排量 Displacement (cc/Rev)	37.2	50.6	63.9	84.5	98.9	108	127	147.7	
制冷剂 Refrigerant	R22								
名义制热量 Nominal Capacity (W)	8153	11090	14005	18520	21670	23660	27822	32357	
名义输入功率 Nominal Power (W)	2052	2790	3524	4660	5450	5950	6997	8137	
名义工况能效比 COP (W/W)	3.97	3.97	3.97	3.97	3.98	3.98	3.98	3.98	
名义工况电流 Nominal Operating Current (A)	3.7	5.0	6.3	8.4	9.6	11.2	14.2	15.5	
堵转电流 LRA (A)	46	46	46	60	85	85	120	120	
最大运行电流 MOC (A)	5	6.8	8.6	12.7	14.5	17.1	20.1	21.7	
曲轴箱加热器功率 Crankcase Heater (W)	70				90				
接管尺寸 Fitting ID Size (mm)	排气管 Dis.Tube	12.94-13.10					22.37-22.51		
	吸气管 Suc.Tube	22.37-22.51					34.97-35.10		
外形尺寸 Dimension (mm)	长(L)	244.4		233.63		281.4			
	宽(W)	230.5		230.5		273.7			
	高(H)	403.4		442.7		523.7			
底脚安装尺寸(孔径) Mounting Dim.(Dia.) (mm)	190.5x190.5(9.0)					190.5x190.5(8.5)			
润滑油类型 Lubrication Oil	3GS								
润滑油初次充注量 Lubrication Oil Initial Charge (L)	1.4	1.4	1.4	1.8	1.8	1.8	3	3	
润滑油重新充注量 Lubrication Oil Recharge (L)	1.2	1.2	1.2	1.6	1.6	1.6	2.8	2.8	
最大工作压力 Maxium Operating Pressure (MPa)	高压侧 High Pressure Side	3							
	低压侧 Low Pressure Side	2							
重量 Weight (kg)	28	28	28	37	38	38	66	66	

注: 蒸发5.0°C, 冷凝55.0°C, 过热11.1K, 过冷8.3K, 环温35.0°C
 Note: Evaporating Temperature 5.0°C, Condensing Temperature 55.0°C, Superheating 11.1K, Subcooling 8.3K, Ambient Temperature 35.0°C

技术参数 Specifications

R22 WW 不带喷气增焓 W/O EVI

技术参数 SPECIFICATIONS

型号 Model	WW125KM-TFD-GN1	WW138KM-TFD-GN1	WW154KM-TFD-GN1	WW170KM-TFD-GN1	WW250KM-TWD-GN1	WW300KM-TWD-GN1
电制 Motor Power	380-420V/3~50Hz or 460V/3~60Hz					
名义功率 Nominal Power (HP)	10	12	13	15	20	25
排量 Displacement (cc/Rev)	166.1	190.8	209	248.9	325	400
制冷剂 Refrigerant	R22					
名义制热量 Nominal Capacity (W)	36388	40921	44825	53382	69704	85789
名义输入功率 Nominal Power (W)	9151	10291	11272	13425	17529	21574
名义工况能效比 COP (W/W)	3.98	3.98	3.98	3.98	3.98	3.98
名义工况电流 Nominal Operating Current (A)	16.4	18.1	20.2	24.0	31.3	40.9
堵转电流 LRA (A)	120	120	149	149	290	290
最大运行电流 MOC (A)	24.4	27.6	30.2	31.9	41.7	52
曲轴箱加热器功率 Crankcase Heater (W)	90					
接管尺寸 Fitting ID Size (mm)	排气管 Dis.Tube	22.37-22.51			28.81-28.95	
	吸气管 Suc.Tube	34.97-35.10			34.97-35.10	
外形尺寸 Dimension (mm)	长(L)	281.4			337.34	
	宽(W)	273.7			333.77	
	高(H)	523.7			649.7	
底脚安装尺寸(孔径) Mounting Dim.(Dia.) (mm)	190.5x190.5(8.5)					
润滑油类型 Lubrication Oil	3GS					
润滑油初次充注量 Lubrication Oil Initial Charge (L)	3	3.2	3.2	3.2	5	5
润滑油重新充注量 Lubrication Oil Recharge (L)	2.8	3	3	3	4.8	4.8
最大工作压力 Maxium Operating Pressure (MPa)	高压侧 High Pressure Side	3				
	低压侧 Low Pressure Side	2				
重量 Weight (kg)	66	66	66	66	92	92

注: 蒸发5.0°C, 冷凝55.0°C, 过热11.1K, 过冷8.3K, 环温35.0°C
 Note: Evaporating Temperature 5.0°C, Condensing Temperature 55.0°C, Superheating 11.1K, Subcooling 8.3K, Ambient Temperature 35.0°C

技术参数 Specifications

WW R22 带喷气增焓 EVI

技术参数 SPECIFICATIONS

型号 Model	WW28KM-TFD-GV1	WW34KM-TFD-GV1	WW48KM-TFD-GV1	WW61KM-TFD-GV1	WW72KM-TFD-GV1	WW79KM-TFD-GV1	WW94KM-TFD-GV1	WW108KM-TFD-GV1	
电制 Motor Power	380-420V/3~/50Hz or 460V/3~/60Hz								
名义功率 Nominal Power (HP)	2	3	4	5	6	7	8	9	
排量 Displacement (cc/Rev)	37.2	50.6	63.9	84.5	98.9	108	127	147.7	
制冷剂 Refrigerant	R22								
名义制热量 Nominal Capacity (W)	9335	12698	16035	21205	24812	27095	31862	37055	
名义输入功率 Nominal Power (W)	2349	3195	4034	5335	6231	6804	8001	9305	
名义工况能效比 COP (W/W)	3.97	3.97	3.97	3.97	3.98	3.98	3.98	3.98	
名义工况电流 Nominal Operating Current (A)	4.2	5.7	7.2	9.0	11.3	12.3	16.2	17.7	
堵转电流 LRA (A)	46	46	46	60	85	85	120	120	
最大运行电流 MOC (A)	5	6.8	8.6	12.7	14.5	17.1	20.1	21.7	
曲轴箱加热器功率 Crankcase Heater (W)	70				90				
接管尺寸 Fitting ID Size (mm)	排气管 Dis.Tube	12.94 -13.10					22.37 -22.51		
	吸气管 Suc.Tube	22.37 -22.51					34.97 -35.10		
外形尺寸 Dimension (mm)	长(L)	244.4		233.63			281.4		
	宽(W)	230.5		230.5			273.7		
	高(H)	403.4		442.7			523.7		
底脚安装尺寸(孔径) Mounting Dim.(Dia.) (mm)	190.5x190.5(9.0)					190.5x190.5(8.5)			
润滑油类型 Lubrication Oil	3GS								
润滑油初次充注量 Lubrication Oil Initial Charge (L)	1.4	1.4	1.4	1.8	1.8	1.8	3	3	
润滑油重新充注量 Lubrication Oil Recharge (L)	1.2	1.2	1.2	1.6	1.6	1.6	2.8	2.8	
最大工作压力 Maxium Operating Pressure (MPa)	高压侧 High Pressure Side	3							
	低压侧 Low Pressure Side	2							
重量 Weight (kg)	28	28	28	37	38	38	66	66	

注：蒸发5.0°C, 冷凝55.0°C, 过热11.1K, 过冷8.3K, 环温35.0°C, EVI 打开
Note: Evaporating Temperature 5.0°C, Condensing Temperature 55.0°C, Superheating 11.1K, Subcooling 8.3K, Ambient Temperature 35.0°C, EVI open

R22 WW 带喷气增焓 EVI

技术参数 Specifications

技术参数 SPECIFICATIONS

型号 Model	WW125KM-TFD-GV1	WW138KM-TFD-GV1	WW154KM-TFD-GV1	WW170KM-TFD-GV1	WW250KM-TWD-GV1	WW300KM-TWD-GV1
电制 Motor Power	380-420V/3~/50Hz or 460V/3~/60Hz					
名义功率 Nominal Power (HP)	10	12	13	15	20	25
排量 Displacement (cc/Rev)	166.1	190.8	209	248.9	325	400
制冷剂 Refrigerant	R22					
名义制热量 Nominal Capacity (W)	41671	46862	51332	61132	79823	98244
名义输入功率 Nominal Power (W)	10464	11768	12890	15351	20045	24671
名义工况能效比 COP (W/W)	3.98	3.98	3.98	3.98	3.98	3.98
名义工况电流 Nominal Operating Current (A)	17.8	21.7	23.0	27.4	35.8	46.7
堵转电流 LRA (A)	120	120	149	149	290	290
最大运行电流 MOC (A)	24.4	27.6	30.2	31.9	41.7	52
曲轴箱加热器功率 Crankcase Heater (W)	90					
接管尺寸 Fitting ID Size (mm)	排气管 Dis.Tube	22.37 -22.51			28.81 -28.95	
	吸气管 Suc.Tube	34.97 -35.10			34.97 -35.10	
外形尺寸 Dimension (mm)	长(L)	281.4			337.34	
	宽(W)	273.7			333.77	
	高(H)	523.7			649.7	
底脚安装尺寸(孔径) Mounting Dim.(Dia.) (mm)	190.5x190.5(8.5)					
润滑油类型 Lubrication Oil	3GS					
润滑油初次充注量 Lubrication Oil Initial Charge (L)	3	3.2	3.2	3.2	5	5
润滑油重新充注量 Lubrication Oil Recharge (L)	2.8	3	3	3	4.8	4.8
最大工作压力 Maxium Operating Pressure (MPa)	高压侧 High Pressure Side	3				
	低压侧 Low Pressure Side	2				
重量 Weight (kg)	66	66	66	66	92	92

注：蒸发5.0°C, 冷凝55.0°C, 过热11.1K, 过冷8.3K, 环温35.0°C, EVI 打开
Note: Evaporating Temperature 5.0°C, Condensing Temperature 55.0°C, Superheating 11.1K, Subcooling 8.3K, Ambient Temperature 35.0°C, EVI open

技术参数 Specifications

WW R134a 不带喷气增焓W/O EVI

技术参数 SPECIFICATIONS

型号 Model	WW28KE-TFD-GN1	WW34KE-TFD-GN1	WW48KE-TFD-GN1	WW61KE-TFD-GN1	WW72KE-TFD-GN1	WW79KE-TFD-GN1	WW94KE-TFD-GN1	WW108KE-TFD-GN1
电制 Motor Power	380-420V/3~/50Hz or 460V/3~/60Hz							
名义功率 Nominal Power (HP)	2	3	4	5	6	7	8	9
排量 Displacement (cc/Rev)	37.2	50.6	63.9	84.5	98.9	108	127	147.7
制冷剂 Refrigerant	R134a							
名义制热量 Nominal Capacity (W)	5516	7503	9475	12530	14660	16010	18827	21895
名义输入功率 Nominal Power (W)	1334	1814	2291	3030	3550	3880	4563	5306
名义工况能效比 COP (W/W)	4.14	4.14	4.14	4.14	4.13	4.13	4.13	4.13
名义工况电流 Nominal Operating Current (A)	2.9	3.9	4.9	6.5	7.4	8.4	9.2	10.1
堵转电流 LRA (A)	46	46	46	60	65	85	120	120
最大运行电流 MOC (A)	5	6.8	8.6	12.7	14.5	17.1	20.1	21.7
曲轴箱加热器功率 Crankcase Heater (W)	70						90	
接管尺寸 Fitting ID Size (mm)	排气管 Dis.Tube	12.94-13.10					22.37-22.51	
	吸气管 Suc.Tube	22.37-22.51					34.97-35.10	
外形尺寸 Dimension (mm)	长(L)	244.4		233.63		281.4		
	宽(W)	230.5		230.5		273.7		
	高(H)	403.4		442.7		523.7		
底脚安装尺寸(孔径) Mounting Dim.(Dia.) (mm)	190.5x190.5(9.0)						190.5x190.5(8.5)	
润滑油类型 Lubrication Oil	POE							
润滑油初次充注量 Lubrication Oil Initial Charge (L)	1.4	1.4	1.4	1.8	1.8	1.8	3	3
润滑油重新充注量 Lubrication Oil Recharge (L)	1.2	1.2	1.2	1.6	1.6	1.6	2.8	2.8
最大工作压力 Maxium Operating Pressure (MPa)	高压侧 High Pressure Side	3						
	低压侧 Low Pressure Side	2						
重量 Weight (kg)	28	28	28	37	38	38	66	66

注：蒸发5.0°C，冷凝55.0°C，过热11.1K，过冷8.3K，环温35.0°C
Note: Evaporating Temperature 5.0°C, Condensing Temperature 55.0°C, Superheating 11.1K, Subcooling 8.3K, Ambient Temperature 35.0°C

技术参数 Specifications

R134a WW 不带喷气增焓W/O EVI

技术参数 SPECIFICATIONS

型号 Model	WW125KE-TFD-GN1	WW138KE-TFD-GN1	WW154KE-TFD-GN1	WW170KE-TFD-GN1	WW250KE-TWD-GN1	WW300KE-TWD-GN1	
电制 Motor Power	380-420V/3~/50Hz or 460V/3~/60Hz						
名义功率 Nominal Power (HP)	10	12	13	15	20	25	
排量 Displacement (cc/Rev)	166.1	190.8	209	248.9	325	400	
制冷剂 Refrigerant	R134a						
名义制热量 Nominal Capacity (W)	24620	28290	30989	36905	48188	59220	
名义输入功率 Nominal Power (W)	5960	6850	7503	8936	11668	14270	
名义工况能效比 COP (W/W)	4.13	4.13	4.13	4.13	4.13	4.15	
名义工况电流 Nominal Operating Current (A)	11.7	12.6	13.4	16.0	20.9	27.1	
堵转电流 LRA (A)	120	120	149	149	290	290	
最大运行电流 MOC (A)	24.4	27.6	30.2	31.9	41.7	52	
曲轴箱加热器功率 Crankcase Heater (W)	90						
接管尺寸 Fitting ID Size (mm)	排气管 Dis.Tube	22.37-22.51				28.81-28.95	
	吸气管 Suc.Tube	34.97-35.10				34.97-35.10	
外形尺寸 Dimension (mm)	长(L)	281.4				337.34	
	宽(W)	273.7				333.77	
	高(H)	523.7				649.7	
底脚安装尺寸(孔径) Mounting Dim.(Dia.) (mm)	190.5x190.5(8.5)						
润滑油类型 Lubrication Oil	POE						
润滑油初次充注量 Lubrication Oil Initial Charge (L)	3	3.2	3.2	3.2	5	5	
润滑油重新充注量 Lubrication Oil Recharge (L)	2.8	3	3	3	4.8	4.8	
最大工作压力 Maxium Operating Pressure (MPa)	高压侧 High Pressure Side	3					
	低压侧 Low Pressure Side	2					
重量 Weight (kg)	66	66	66	66	92	92	

注：蒸发5.0°C，冷凝55.0°C，过热11.1K，过冷8.3K，环温35.0°C
Note: Evaporating Temperature 5.0°C, Condensing Temperature 55.0°C, Superheating 11.1K, Subcooling 8.3K, Ambient Temperature 35.0°C

技术参数 Specifications

WW R134a 带喷气增焓 EVI

技术参数 SPECIFICATIONS

型号 Model	WW28KE-TFD-GV1	WW34KE-TFD-GV1	WW48KE-TFD-GV1	WW61KE-TFD-GV1	WW72KE-TFD-GV1	WW79KE-TFD-GV1	WW94KE-TFD-GV1	WW108KE-TFD-GV1	
电制 Motor Power	380-420V/3~/50Hz or 460V/3~/60Hz								
名义功率 Nominal Power (HP)	2	3	4	5	6	7	8	9	
排量 Displacement (cc/Rev)	37.2	50.6	63.9	84.5	98.9	108	127	147.7	
制冷剂 Refrigerant	R134a								
名义制热量 Nominal Capacity (W)	6027	8198	10353	13690	16020	17500	20579	23933	
名义输入功率 Nominal Power (W)	1457	1982	2503	3310	3880	4235	4980	5792	
名义工况能效比 COP (W/W)	4.14	4.14	4.14	4.14	4.13	4.13	4.13	4.13	
名义工况电流 Nominal Operating Current (A)	3.2	4.3	5.4	7.1	8.1	9.2	10.1	11.0	
堵转电流 LRA (A)	46	46	46	60	65	85	120	120	
最大运行电流 MOC (A)	5	6.8	8.6	12.7	14.5	17.1	20.1	21.7	
曲轴箱加热器功率 Crankcase Heater (W)	70				90				
接管尺寸 Fitting ID Size (mm)	排气管 Dis.Tube	12.94 -13.10					22.37 -22.51		
	吸气管 Suc.Tube	22.37 -22.51					34.97 -35.10		
外形尺寸 Dimension (mm)	长(L)	244.4		233.63			281.4		
	宽(W)	230.5		230.5			273.7		
	高(H)	403.4		442.7			523.7		
底脚安装尺寸(孔径) Mounting Dim.(Dia.) (mm)	190.5x190.5(9.0)					190.5x190.5(8.5)			
润滑油类型 Lubrication Oil	POE								
润滑油初次充注量 Lubrication Oil Initial Charge (L)	1.4	1.4	1.4	1.8	1.8	1.8	3	3	
润滑油重新充注量 Lubrication Oil Recharge (L)	1.2	1.2	1.2	1.6	1.6	1.6	2.8	2.8	
最大工作压力 Maxium Operating Pressure (MPa)	高压侧 High Pressure Side	3							
	低压侧 Low Pressure Side	2							
重量 Weight (kg)	28	28	28	37	38	38	66	66	

注：蒸发5.0℃，冷凝55.0℃，过热11.1K，过冷8.3K，环温35.0℃，EVI打开
Note: Evaporating Temperature 5.0°C, Condensing Temperature 55.0°C, Superheating 11.1K, Subcooling 8.3K, Ambient Temperature 35.0°C, EVI open

R134a WW 带喷气增焓 EVI

技术参数 Specifications

技术参数 SPECIFICATIONS

型号 Model	WW125KE-TFD-GV1	WW138KE-TFD-GV1	WW154KE-TFD-GV1	WW170KE-TFD-GV1	WW250KE-TWD-GV1	WW300KE-TWD-GV1
电制 Motor Power	380-420V/3~/50Hz or 460V/3~/60Hz					
名义功率 Nominal Power (HP)	10	12	13	15	20	25
排量 Displacement (cc/Rev)	166.1	190.8	209	248.9	325	400
制冷剂 Refrigerant	R134a					
名义制热量 Nominal Capacity (W)	26900	30900	33847	40309	52634	64797
名义输入功率 Nominal Power (W)	6510	7490	8204	9771	12758	15701
名义工况能效比 COP (W/W)	4.13	4.13	4.13	4.13	4.13	4.13
名义工况电流 Nominal Operating Current (A)	12.8	13.8	14.7	17.5	22.9	29.1
堵转电流 LRA (A)	120	120	149	149	290	290
最大运行电流 MOC (A)	24.4	27.6	30.2	31.9	41.7	52
曲轴箱加热器功率 Crankcase Heater (W)	90					
接管尺寸 Fitting ID Size (mm)	排气管 Dis.Tube	22.37 -22.51			28.81 -28.95	
	吸气管 Suc.Tube	34.97 -35.10			34.97 -35.10	
外形尺寸 Dimension (mm)	长(L)	281.4			337.34	
	宽(W)	273.7			333.77	
	高(H)	523.7			649.7	
底脚安装尺寸(孔径) Mounting Dim.(Dia.) (mm)	190.5x190.5(8.5)					
润滑油类型 Lubrication Oil	POE					
润滑油初次充注量 Lubrication Oil Initial Charge (L)	3	3.2	3.2	3.2	5	5
润滑油重新充注量 Lubrication Oil Recharge (L)	2.8	3	3	3	4.8	4.8
最大工作压力 Maxium Operating Pressure (MPa)	高压侧 High Pressure Side	3				
	低压侧 Low Pressure Side	2				
重量 Weight (kg)	66	66	66	66	92	92

注：蒸发5.0℃，冷凝55.0℃，过热11.1K，过冷8.3K，环温35.0℃，EVI打开
Note: Evaporating Temperature 5.0°C, Condensing Temperature 55.0°C, Superheating 11.1K, Subcooling 8.3K, Ambient Temperature 35.0°C, EVI open

技术参数 Specifications

WW R410A 不带喷气增焓W/O EVI

技术参数 SPECIFICATIONS

型号 Model	WW28KP-TFD-GN1	WW34KP-TFD-GN1	WW48KP-TFD-GN1	WW61KP-TFD-GN1	WW72KP-TFD-GN1	WW81KP-TFD-GN1	WW94KP-TFD-GN1	WW108KP-TFD-GN1
电制 Motor Power	380-420V/3~50Hz or 460V/3~60Hz							
名义功率 Nominal Power (HP)	2	3	4	5	6	7	8	9
排量 Displacement (cc/Rev)	26.7	36	48	63.9	67.1	77.2	84.5	98.9
制冷剂 Refrigerant	R410A							
名义制热量 Nominal Capacity (W)	8579	11567	15423	20532	21560	24805	27151	31778
名义输入功率 Nominal Power (W)	2254	3038	4051	5393	5663	6516	7132	8347
名义工况能效比 COP (W/W)	3.81	3.81	3.81	3.81	3.81	3.81	3.81	3.81
名义工况电流 Nominal Operating Current(A)	3.8	5.2	6.9	9.2	9.7	11.1	12.2	14.2
堵转电流(LRA)(A)	45	45	45	60	85	85	85	122
最大运行电流(MOC)(A)	6	8.1	10.8	14.3	15.1	17.3	19	22.2
曲轴箱加热器功率 Crankcase Heater (W)	70							
接管尺寸 Fitting ID Size (mm)	排气管 Dis.Tube	12.94-13.10						
	吸气管 Suc.Tube	22.37-22.51						
外形尺寸 Dimension (mm)	长(L)	244.4		233.63				
	宽(W)	230.5		230.5				
	高(H)	403.4		442.7				
底脚安装尺寸(孔径) Mounting Dim.(Dia.) (mm)	190.5x190.5(9.0)							
润滑油类型 Lubrication Oil	POE							
润滑油初次充注量 Lubrication Oil Initial Charge (L)	1.4	1.4	1.4	1.4	1.8	1.8	1.8	1.8
润滑油重新充注量 Lubrication Oil Recharge(L)	1.2	1.2	1.2	1.2	1.6	1.6	1.6	1.6
最大工作压力 Maxium Operating Pressure (MPa)	高压侧 High Pressure Side	4.3						
	低压侧 Low Pressure Side	2						
重量 Weight (kg)	28	28	28	30	38	38	38	43

注: 蒸发5.0°C, 冷凝55.0°C, 过热11.1K, 过冷8.3K, 环温35.0°C
Note: Evaporating Temperature 5.0°C, Condensing Temperature 55.0°C, Superheating 11.1K, Subcooling 8.3K, Ambient Temperature 35.0°C

R410A WW 不带喷气增焓W/O EVI

技术参数 Specifications

技术参数 SPECIFICATIONS

型号 Model	WW125KP-TFD-GN1	WW144KP-TFD-GN1	WW154KP-TFD-GN1	WW170KP-TFD-GN1	WW235KP-TWD-GN1	WW292KP-TWD-GN1
电制 Motor Power	380-420V/3~50Hz or 460V/3~60Hz					
名义功率 Nominal Power (HP)	10	12	13	15	20	25
排量 Displacement (cc/Rev)	112	124.1	143.1	167.8	212.7	262.8
制冷剂 Refrigerant	R410A					
名义制热量 Nominal Capacity (W)	35987	39875	45980	53916	68343	84441
名义输入功率 Nominal Power (W)	9453	10474	12078	14163	17952	22181
名义工况能效比 COP (W/W)	3.81	3.81	3.81	3.81	3.81	3.81
名义工况电流 Nominal Operating Current(A)	16.1	17.9	20.6	24.2	30.6	37.8
堵转电流(LRA)(A)	149	149	149	149	290	290
最大运行电流(MOC)(A)	25.1	27.8	32.1	37.6	47.7	59
曲轴箱加热器功率 Crankcase Heater (W)	90					
接管尺寸 Fitting ID Size (mm)	排气管 Dis.Tube	22.37-22.51			28.81-28.95	
	吸气管 Suc.Tube	34.97-35.10			34.97-35.10	
外形尺寸 Dimension (mm)	长(L)	281.4			337.34	
	宽(W)	273.7			333.77	
	高(H)	523.7			649.7	
底脚安装尺寸(孔径) Mounting Dim.(Dia.) (mm)	190.5x190.5(8.5)					
润滑油类型 Lubrication Oil	POE					
润滑油初次充注量 Lubrication Oil Initial Charge (L)	3	3	3	3	5	5
润滑油重新充注量 Lubrication Oil Recharge(L)	2.8	2.8	2.8	2.8	4.8	4.8
最大工作压力 Maxium Operating Pressure (MPa)	高压侧 High Pressure Side	4.3				
	低压侧 Low Pressure Side	2				
重量 Weight (kg)	66	66	66	66	92	92

注: 蒸发5.0°C, 冷凝55.0°C, 过热11.1K, 过冷8.3K, 环温35.0°C, EVI打开
Note: Evaporating Temperature 5.0°C, Condensing Temperature 55.0°C, Superheating 11.1K, Subcooling 8.3K, Ambient Temperature 35.0°C, EVI open

技术参数 Specifications

WW R410A 带喷气增焓 EVI

技术参数 SPECIFICATIONS

型号 Model	WW50HP-TFD-GV1	WW70HP-TFD-GV1	WW96HP-TFD-GV1	WW126HP-TFD-GV1	WW130HP-TFD-GV1	WW150HP-TFD-GV1	WW170HP-TFD-GV1	WW200HP-TFD-GV1
电制 Motor Power	380-420V/3~/50Hz or 460V/3~/60Hz							
名义功率 Nominal Power (HP)	2	3	4	5	6	7	8	9
排量 Displacement (cc/Rev)	26.7	36	48	63.9	67.1	77.2	84.5	98.9
制冷剂 Refrigerant	R410A							
名义制热量 Nominal Capacity (W)	9712	13094	17459	23242	24406	28080	30735	35973
名义输入功率 Nominal Power (W)	2655	3580	4773	6354	6672	7677	8403	9835
名义工况能效比 COP (W/W)	3.66	3.66	3.66	3.66	3.66	3.66	3.66	3.66
名义工况电流 Nominal Operating Current(A)	4.7	6.3	8.4	11.2	11.7	13.5	14.8	17.3
堵转电流(LRA)(A)	45	45	45	60	85	85	85	122
最大运行电流(MOC)(A)	6	8.1	10.8	14.3	15.1	17.3	19	22.2
曲轴箱加热器功率 Crankcase Heater (W)	70							
接管尺寸 Fitting ID Size (mm)	排气管 Dis.Tube	12.94 -13.10						
	吸气管 Suc.Tube	22.37 -22.51						
外形尺寸 Dimension (mm)	长(L)	244.4			233.63			
	宽(W)	230.5			230.5			
	高(H)	403.4			442.7			
底脚安装尺寸(孔径) Mounting Dim.(Dia.) (mm)	190.5x190.5(9.0)							
润滑油类型 Lubrication Oil	POE							
润滑油初次充注量 Lubrication Oil Initial Charge (L)	1.4	1.4	1.4	1.4	1.8	1.8	1.8	1.8
润滑油重新充注量 Lubrication Oil Recharge(L)	1.2	1.2	1.2	1.2	1.6	1.6	1.6	1.6
最大工作压力 Maxium Operating Pressure (MPa)	高压侧 High Pressure Side	4.3						
	低压侧 Low Pressure Side	2						
重量 Weight (kg)	28	28	28	30	38	38	38	43

注: 蒸发5.0°C, 冷凝55.0°C, 过热11.1K, 过冷8.3K, 环温35.0°C, EVI 打开
Note: Evaporating Temperature 5.0°C, Condensing Temperature 55.0°C, Superheating 11.1K, Subcooling 8.3K, Ambient Temperature 35.0°C, EVI open

R410A WW 带喷气增焓 EVI

技术参数 Specifications

技术参数 SPECIFICATIONS

型号 Model	WW220HP-TFD-GV1	WW258HP-TFD-GV1	WW286HP-TFD-GV1	WW336HP-TFD-GV1	WW430HP-TWD-GV1	WW520HP-TWD-GV1
电制 Motor Power	380-420V/3~/50Hz or 460V/3~/60Hz					
名义功率 Nominal Power (HP)	10	12	13	15	20	25
排量 Displacement (cc/Rev)	112	124.1	143.1	167.8	212.7	262.8
制冷剂 Refrigerant	R410A					
名义制热量 Nominal Capacity (W)	40738	45139	52050	61034	77366	95589
名义输入功率 Nominal Power (W)	11137	12341	14230	16686	21151	26133
名义工况能效比 COP (W/W)	3.66	3.66	3.66	3.66	3.66	3.66
名义工况电流 Nominal Operating Current(A)	19.6	21.7	25	29.3	37.2	45.9
堵转电流(LRA)(A)	149	149	149	149	290	290
最大运行电流(MOC)(A)	25.1	28.4	32.1	35.8	45.3	56
曲轴箱加热器功率 Crankcase Heater (W)	90	90	90	90	90	90
接管尺寸 Fitting ID Size (mm)	排气管 Dis.Tube	22.37 -22.51			28.81 -28.95	
	吸气管 Suc.Tube	34.97 -35.10			34.97 -35.10	
外形尺寸 Dimension (mm)	长(L)	281.4			337.34	
	宽(W)	273.7			333.77	
	高(H)	523.7			649.7	
底脚安装尺寸(孔径) Mounting Dim.(Dia.) (mm)	190.5x190.5(8.5)					
润滑油类型 Lubrication Oil	POE					
润滑油初次充注量 Lubrication Oil Initial Charge (L)	3	3	3	3	5	5
润滑油重新充注量 Lubrication Oil Recharge(L)	2.8	2.8	2.8	2.8	4.8	4.8
最大工作压力 Maxium Operating Pressure (MPa)	高压侧 High Pressure Side	4.3				
	低压侧 Low Pressure Side	2				
重量 Weight (kg)	66	66	66	66	92	92

注: 蒸发5.0°C, 冷凝55.0°C, 过热11.1K, 过冷8.3K, 环温35.0°C, EVI 打开
Note: Evaporating Temperature 5.0°C, Condensing Temperature 55.0°C, Superheating 11.1K, Subcooling 8.3K, Ambient Temperature 35.0°C, EVI open

制热量

Heating Capacity

WW

R22

不带喷气增焓W/O EVI

R22

WW

不带喷气增焓W/O EVI

制热量

Heating Capacity

制热量 HEATING CAPACITY

型号Model	项目Item (W)	TclTe	-20℃	-15℃	-10℃	-5℃	0℃	5℃	10℃	15℃
WW28KM-TFD-GN1	Q	70℃						7796	8736	9879
	P						2764	2831	2879	
	Q	65℃					7024	7873	8920	10156
	P						2423	2499	2558	2600
	Q	60℃				6280	7042	7996	9133	10443
	P					2114	2196	2262	2315	2354
	Q	55℃			5568	6246	7110	8151	9360	10729
	P				1841	1924	1994	2052	2099	2137
	Q	50℃		4893	5490	6267	7215	8326	9590	11000
	P			1602	1682	1752	1812	1864	1908	1946
	Q	45℃	4260	4778	5471	6330	7345	8508	9810	11243
	P		1399	1473	1539	1597	1649	1695	1738	1779
	Q	40℃	4115	4727	5499	6421	7486	8684	10007	11446
	P		1297	1354	1406	1455	1500	1544	1587	1631
	Q	35℃	4038	4726	5560	6529	7627	8843	10169	
	P		1199	1242	1283	1323	1364	1406	1452	
	Q	30℃	4017	4764	5642	6641	7753	8970		
	P		1103	1133	1164	1198	1236	1279		
	Q	25℃	4039	4827	5732	6743	7854			
	P		1007	1025	1048	1078	1115			
Q	20℃	4091	4903	5817	6824	7915				
P		906	915	932	959	996				
WW34KM-TFD-GN1	Q	70℃						10604	11883	13438
	P						3760	3851	3916	
	Q	65℃					9554	10709	12134	13814
	P						3295	3399	3479	3537
	Q	60℃				8542	9579	10876	12422	14205
	P					2876	2987	3077	3148	3202
	Q	55℃			7574	8496	9671	11087	12732	14594
	P				2504	2617	2712	2791	2855	2907
	Q	50℃		6656	7468	8525	9814	11325	13045	14962
	P			2179	2289	2383	2465	2535	2595	2647
	Q	45℃	5794	6500	7442	8610	9991	11573	13344	15293
	P		1903	2004	2093	2172	2243	2306	2365	2419
	Q	40℃	5597	6430	7480	8734	10183	11813	13612	15570
	P		1764	1842	1913	1979	2041	2100	2159	2219
	Q	35℃	5493	6429	7562	8881	10374	12028	13832	
	P		1631	1689	1745	1799	1855	1913	1975	
	Q	30℃	5464	6480	7674	9033	10546	12201		
	P		1501	1541	1584	1630	1682	1740		
	Q	25℃	5494	6566	7796	9173	10683			
	P		1369	1394	1426	1466	1516			
Q	20℃	5564	6669	7913	9283	10767				
P		1232	1244	1268	1304	1355				

注：冷凝器出口过冷度8.3K, 过热度11.1K
Note: Condenser Outlet Subcooling8.3K, Subheating 11.1K

制热量 HEATING CAPACITY

型号Model	项目Item (W)	TclTe	-20℃	-15℃	-10℃	-5℃	0℃	5℃	10℃	15℃
WW48KM-TFD-GN1	Q	70℃						13391	15006	16970
	P						4748	4864	4946	
	Q	65℃					12065	13524	15323	17445
	P						4161	4292	4394	4467
	Q	60℃				10787	12097	13735	15688	17939
	P					3632	3772	3886	3976	4044
	Q	55℃			9565	10730	12213	14001	16078	18430
	P				3162	3304	3424	3524	3606	3671
	Q	50℃		8406	9431	10766	12394	14302	16474	18895
	P			2752	2890	3010	3113	3201	3277	3343
	Q	45℃	7317	8208	9399	10873	12617	14614	16852	19313
	P		2404	2531	2643	2743	2832	2912	2986	3055
	Q	40℃	7068	8120	9445	11030	12859	14918	17190	19662
	P		2227	2326	2416	2499	2577	2652	2727	2802
	Q	35℃	6937	8119	9550	11216	13100	15190	17468	
	P		2060	2133	2203	2272	2343	2416	2494	
	Q	30℃	6900	8183	9691	11407	13318	15409		
	P		1895	1946	2000	2058	2124	2198		
	Q	25℃	6938	8292	9846	11584	13491			
	P		1729	1761	1801	1852	1915			
Q	20℃	7027	8423	9993	11723	13597				
P		1556	1571	1601	1647	1712				
WW61KM-TFD-GN1	Q	70℃						17708	19844	22440
	P						6279	6432	6540	
	Q	65℃					15954	17884	20263	23069
	P						5503	5676	5810	5907
	Q	60℃				14264	15996	18163	20745	23722
	P					4803	4988	5139	5258	5347
	Q	55℃			12648	14189	16151	18515	21262	24371
	P				4181	4370	4528	4660	4768	4854
	Q	50℃		11115	12471	14236	16390	18912	21784	24986
	P			3639	3822	3980	4116	4233	4334	4421
	Q	45℃	9676	10854	12428	14378	16684	19326	22284	25539
	P		3179	3347	3495	3627	3745	3851	3949	4040
	Q	40℃	9347	10737	12490	14586	17005	19727	22732	26001
	P		2946	3076	3195	3304	3408	3507	3606	3706
	Q	35℃	9173	10736	12629	14831	17324	20086	23099	
	P		2724	2820	2913	3005	3098	3195	3298	
	Q	30℃	9125	10822	12815	15085	17612	20376		
	P		2506	2573	2644	2722	2808	2906		
	Q	25℃	9174	10965	13020	15318	17840			
	P		2287	2328	2381	2448	2532			
Q	20℃	9292	11138	13214	15502	17980				
P		2058	2078	2117	2178	2263				

注：冷凝器出口过冷度8.3K, 过热度11.1K
Note: Condenser Outlet Subcooling8.3K, Subheating 11.1K

制热量

Heating Capacity

WW

R22

不带喷气增焓W/O EVI

R22

WW

不带喷气增焓W/O EVI

制热量

Heating Capacity

制热量 HEATING CAPACITY

型号Model	项目Item (W)	TclTe	-20℃	-15℃	-10℃	-5℃	0℃	5℃	10℃	15℃	
WW72KM-TFD-GN1	Q	70℃						20726	23225	26264	
	P						7349	7528	7654		
	Q	65℃					18673	20932	23716	27001	
	P						6441	6644	6800	6913	
	Q	60℃				16695	18722	21258	24280	27765	
	P					5622	5838	6015	6154	6258	
	Q	55℃			14804	16607	18903	21670	24885	28524	
	P				4894	5114	5300	5455	5581	5681	
	Q	50℃			13009	14597	16662	19183	22135	25497	29244
	P				4259	4473	4658	4818	4955	5073	5174
	Q	45℃	11324	12704	14546	16829	19527	22619	26082	29891	
	P		3720	3917	4091	4245	4383	4508	4622	4729	
	Q	40℃	10940	12567	14619	17072	19903	23089	26606	30432	
	P		3447	3600	3739	3867	3988	4105	4220	4337	
	Q	35℃	10736	12566	14781	17359	20276	23509	27036		
	P		3188	3301	3410	3517	3626	3739	3860		
	Q	30℃	10680	12666	14999	17655	20613	23848			
	P		2934	3012	3095	3186	3287	3402			
	Q	25℃	10738	12834	15238	17928	20880				
	P		2676	2725	2787	2866	2964				
Q	20℃	10875	13036	15466	18143	21044					
P		2408	2432	2478	2549	2649					
WW79KM-TFD-GN1	Q	70℃						22633	25362	28681	
	P						8025	8220	8359		
	Q	65℃					20391	22858	25898	29485	
	P						7033	7255	7426	7550	
	Q	60℃				18231	20445	23214	26514	30320	
	P					6139	6376	6568	6720	6834	
	Q	55℃			16166	18135	20643	23664	27175	31149	
	P				5344	5585	5788	5956	6094	6204	
	Q	50℃			14207	15940	18195	20948	24172	27843	31935
	P				4651	4885	5087	5261	5411	5539	5650
	Q	45℃	12366	13873	15885	18377	21324	24701	28481	32641	
	P		4063	4277	4467	4636	4786	4922	5047	5164	
	Q	40℃	11946	13724	15964	18643	21734	25213	29054	33232	
	P		3765	3931	4083	4223	4355	4483	4608	4736	
	Q	35℃	11724	13722	16141	18956	22142	25673	29523		
	P		3481	3605	3723	3840	3959	4083	4215		
	Q	30℃	11663	13831	16379	19280	22510	26043			
	P		3203	3289	3380	3479	3589	3714			
	Q	25℃	11726	14015	16640	19578	22802				
	P		2923	2976	3043	3129	3237				
Q	20℃	11876	14235	16889	19813	22980					
P		2630	2656	2706	2784	2893					

注：冷凝器出口过冷度8.3K, 过热度11.1K
 Note: Condenser Outlet Subcooling 8.3K, Subheating 11.1K

制热量 HEATING CAPACITY

型号Model	项目Item (W)	TclTe	-20℃	-15℃	-10℃	-5℃	0℃	5℃	10℃	15℃	
WW94KM-TFD-GN1	Q	70℃						26615	29824	33727	
	P						9437	9667	9829		
	Q	65℃					23979	26880	30454	34672	
	P						8270	8531	8732	8878	
	Q	60℃				21439	24042	27298	31179	35654	
	P					7219	7497	7724	7902	8037	
	Q	55℃			19010	21325	24274	27828	31956	36628	
	P				6284	6567	6806	7004	7166	7295	
	Q	50℃			16706	18744	21396	24633	28425	32741	37553
	P				5470	5744	5982	6187	6363	6514	6644
	Q	45℃	14542	16313	18679	21610	25075	29046	33492	38384	
	P		4777	5030	5253	5451	5628	5788	5935	6072	
	Q	40℃	14048	16138	18773	21923	25558	29649	34165	39078	
	P		4427	4623	4801	4966	5122	5271	5419	5569	
	Q	35℃	13787	16136	18981	22291	26037	30189	34717		
	P		4094	4239	4379	4516	4656	4801	4957		
	Q	30℃	13714	16264	19260	22672	26470	30624			
	P		3767	3868	3974	4091	4221	4368			
	Q	25℃	13788	16480	19568	23022	26813				
	P		3437	3499	3579	3680	3806				
Q	20℃	13965	16740	19861	23298	27023					
P		3093	3123	3182	3273	3402					
WW108KM-TFD-GN1	Q	70℃						30953	34685	39224	
	P						10975	11242	11431		
	Q	65℃					27887	31261	35418	40323	
	P						9618	9922	10156	10325	
	Q	60℃				24933	27960	31747	36261	41465	
	P					8395	8719	8983	9190	9346	
	Q	55℃			22108	24801	28231	32363	37164	42599	
	P				7309	7638	7915	8146	8334	8484	
	Q	50℃			19429	21799	24884	28648	33058	38078	43674
	P				6361	6680	6957	7195	7400	7575	7727
	Q	45℃	16912	18972	21724	25132	29162	33780	38951	44640	
	P		5556	5849	6109	6340	6546	6732	6902	7062	
	Q	40℃	16338	18768	21832	25496	29723	34481	39734	45447	
	P		5149	5376	5584	5776	5956	6130	6303	6477	
	Q	35℃	16034	18766	22074	25924	30281	35110	40376		
	P		4761	4930	5092	5252	5415	5584	5764		
	Q	30℃	15950	18915	22399	26367	30784	35616			
	P		4381	4498	4622	4758	4909	5080			
	Q	25℃	16036	19166	22757	26774	31183				
	P		3997	4070	4162	4280	4426				
Q	20℃	16241	19468	23098	27096	31428					
P		3597	3632	3700	3807	3956					

注：冷凝器出口过冷度8.3K, 过热度11.1K
 Note: Condenser Outlet Subcooling 8.3K, Subheating 11.1K

制热量

Heating Capacity

WW

R22

不带喷气增焓W/O EVI

制热量 HEATING CAPACITY

型号Model	项目Item (W)	TclTe	-20°C	-15°C	-10°C	-5°C	0°C	5°C	10°C	15°C
WW125KM-TFD-GN1	Q	70°C						34809	39006	44110
	P							12342	12643	12855
	Q	65°C					31361	35155	39830	45347
	P						10817	11158	11421	11611
	Q	60°C				28039	31443	35702	40778	46631
	P					9441	9806	10102	10335	10511
	Q	55°C			24862	27890	31747	36395	41794	47905
	P				8219	8589	8901	9161	9372	9541
	Q	50°C		21849	24515	27984	32217	37176	42821	49114
	P			7154	7512	7823	8091	8321	8519	8689
	Q	45°C	19019	21336	24430	28263	32795	37989	43803	50201
	P		6248	6578	6870	7130	7361	7570	7762	7941
	Q	40°C	18373	21106	24552	28672	33426	38777	44684	51109
	P		5790	6046	6280	6495	6698	6894	7088	7284
	Q	35°C	18031	21104	24824	29154	34053	39483	45406	
	P		5354	5544	5727	5907	6089	6279	6483	
	Q	30°C	17937	21272	25190	29652	34619	40053		
	P		4927	5059	5198	5350	5520	5713		
	Q	25°C	18034	21554	25592	30110				
	P		4495	4576	4681	4813				
Q	20°C	18265	21893	25975	30471					
P		4045	4084	4161	4281					
WW138KM-TFD-GN1	Q	70°C						39985	44807	50670
	P							14178	14523	14767
	Q	65°C					36025	40383	45753	52090
	P						12425	12817	13119	13338
	Q	60°C				32209	36119	41012	46842	53565
	P					10845	11264	11604	11872	12074
	Q	55°C			28559	32038	36468	41807	48009	55029
	P				9441	9867	10225	10523	10766	10960
	Q	50°C		25098	28160	32145	37008	42704	49189	56418
	P			8217	8630	8987	9294	9559	9786	9982
	Q	45°C	21847	24509	28063	32466	37672	43638	50317	57666
	P		7177	7556	7892	8190	8456	8696	8916	9122
	Q	40°C	21105	24245	28203	32936	38397	44543	51328	58709
	P		6651	6945	7213	7461	7694	7919	8142	8367
	Q	35°C	20712	24242	28516	33489	39117	45355	52158	
	P		6150	6369	6578	6785	6995	7213	7447	
	Q	30°C	20604	24435	28936	34061	39767	46009		
	P		5659	5811	5971	6146	6341	6562		
	Q	25°C	20715	24759	29398	34587				
	P		5163	5257	5377	5528				
Q	20°C	20981	25149	29838	35003					
P		4647	4691	4780	4918					

注：冷凝器出口过冷度8.3K, 过热度11.1K
 Note: Condenser Outlet Subcooling 8.3K, Subheating 11.1K



制热量

Heating Capacity

R22

WW

不带喷气增焓W/O EVI

制热量 HEATING CAPACITY

型号Model	项目Item (W)	TclTe	-20°C	-15°C	-10°C	-5°C	0°C	5°C	10°C	15°C
WW154KM-TFD-GN1	Q	70°C						43799	49081	55503
	P							15530	15908	16175
	Q	65°C					39461	44235	50117	57059
	P						13610	14040	14371	14610
	Q	60°C				35281	39564	44924	51310	58674
	P					11880	12338	12711	13005	13226
	Q	55°C			31284	35094	39947	45795	52588	60278
	P				10342	10808	11201	11527	11793	12006
	Q	50°C		27492	30846	35211	40538	46777	53881	61799
	P			9001	9453	9844	10181	10471	10719	10934
	Q	45°C	23931	26847	30740	35563	41266	47800	55117	63167
	P		7862	8277	8645	8971	9263	9526	9767	9993
	Q	40°C	23118	26558	30894	36077	42060	48792	56225	64309
	P		7285	7608	7901	8173	8428	8675	8918	9165
	Q	35°C	22688	26555	31236	36684	42848	49681	57133	
	P		6737	6976	7206	7432	7662	7901	8157	
	Q	30°C	22570	26766	31696	37310	43560	50397		
	P		6199	6365	6541	6732	6946	7188		
	Q	25°C	22691	27121	32202	37887	44125			
	P		5656	5759	5890	6056	6263			
Q	20°C	22982	27548	32684	38341	44471				
P		5090	5139	5236	5387	5598				
WW170KM-TFD-GN1	Q	70°C						52161	58450	66099
	P							18495	18945	19263
	Q	65°C					46995	52680	59685	67952
	P						16209	16720	17114	17399
	Q	60°C				42017	47118	53500	61105	69876
	P					14148	14694	15137	15487	15750
	Q	55°C			37256	41793	47573	54538	62628	71786
	P				12316	12871	13339	13727	14045	14298
	Q	50°C		32741	36735	41933	48277	55708	64167	73598
	P			10720	11257	11723	12125	12470	12766	13021
	Q	45°C	28500	31972	36609	42352	49144	56926	65639	75226
	P		9363	9857	10295	10684	11031	11344	11631	11900
	Q	40°C	27532	31628	36792	42965	50089	58106	66958	76587
	P		8676	9060	9410	9733	10037	10331	10621	10915
	Q	35°C	27020	31624	37199	43687	51028	59166	68041	
	P		8023	8308	8581	8851	9124	9410	9714	
	Q	30°C	26878	31876	37747	44433	51877	60018		
	P		7383	7580	7789	8017	8272	8561		
	Q	25°C	27023	32298	38350	45120	52549			
	P		6736	6858	7014	7212	7459			
Q	20°C	27370	32807	38924	45661	52961				
P		6061	6120	6235	6415	6667				

注：冷凝器出口过冷度8.3K, 过热度11.1K
 Note: Condenser Outlet Subcooling 8.3K, Subheating 11.1K

制热量
Heating Capacity

制热量 HEATING CAPACITY

型号 Model		项目 Item (W)	Tc/Te	-30℃	-25℃	-20℃	-15℃	-10℃	-5℃	0℃	5℃	10℃	15℃
WW48KM-TFD-GV1	Q	70℃									16276	18048	20062
	P										5559	5683	5808
	Q	65℃									8472	9471	10545
	P										4602	4585	4608
	Q	60℃									7907	9002	10166
	P										4066	4061	4094
	Q	55℃									6354	7491	8664
	P										3640	3606	3613
	Q	50℃									5990	7195	8431
	P										3228	3209	3228
	Q	45℃									5736	6992	8275
	P										2868	2864	2896
	Q	40℃									5564	6855	8167
	P										2548	2559	2604
	Q	35℃									5445	6755	8080
	P										2258	2285	2341
	Q	30℃									5353	6665	7987
	P										1986	2028	2097
	Q	25℃									5259	6557	7859
	P										1721	1778	1860
Q	20℃									5136	6403	7668	
P										1451	1524	1618	
WW61KM-TFD-GV1	Q	70℃									21523	23867	26530
	P										7351	7516	7681
	Q	65℃									9945	11203	12524
	P										6171	6085	6063
	Q	60℃									9064	10456	11903
	P										5443	5377	5371
	Q	55℃									8402	9905	11458
	P										4814	4768	4778
	Q	50℃									7921	9515	11150
	P										4268	4243	4269
	Q	45℃									7585	9247	10943
	P										3792	3787	3829
	Q	40℃									7357	9065	10800
	P										3370	3385	3443
	Q	35℃									7201	8933	10685
	P										2986	3021	3096
	Q	30℃									7079	8814	10562
	P										2626	2682	2773
	Q	25℃									6955	8671	10392
	P										2276	2352	2459
Q	20℃									6792	8467	10140	
P										1919	2015	2140	

注：冷凝器出口过冷度8.3K，过热度11.1K
Note: Condenser Outlet Subcooling 8.3K, Subheating 11.1K

WW R22
带喷气增焓 EVI

R22 WW
带喷气增焓 EVI

制热量
Heating Capacity

制热量 HEATING CAPACITY

型号 Model		项目 Item (W)	Tc/Te	-30℃	-25℃	-20℃	-15℃	-10℃	-5℃	0℃	5℃	10℃	15℃
WW72KM-TFD-GV1	Q	70℃									25191	27934	31051
	P										8604	8796	8990
	Q	65℃									11640	13112	14658
	P										7222	7122	7096
	Q	60℃									10609	12238	13932
	P										6370	6294	6286
	Q	55℃									9834	11593	13410
	P										5634	5581	5592
	Q	50℃									9271	11136	13050
	P										4996	4966	4996
	Q	45℃									8878	10822	12807
	P										4438	4432	4481
	Q	40℃									8611	10610	12641
	P										3944	3961	4030
	Q	35℃									8428	10455	12506
	P										3495	3536	3624
	Q	30℃									8285	10316	12362
	P										3074	3139	3246
	Q	25℃									8140	10148	12163
	P										2663	2752	2879
Q	20℃									7949	9910	11868	
P										2246	2359	2504	
WW79KM-TFD-GV1	Q	70℃									27509	30504	33908
	P										9395	9606	9817
	Q	65℃									12711	14318	16007
	P										7887	7777	7749
	Q	60℃									11585	13364	15214
	P										6956	6873	6864
	Q	55℃									10739	12660	14644
	P										6152	6094	6107
	Q	50℃									10124	12161	14250
	P										5455	5423	5456
	Q	45℃									9695	11818	13986
	P										4847	4840	4894
	Q	40℃									9403	11586	13804
	P										4307	4326	4401
	Q	35℃									9203	11417	13657
	P										3816	3861	3957
	Q	30℃									9047	11265	13499
	P										3357	3428	3545
	Q	25℃									8889	11082	13282
	P										2908	3006	3143
Q	20℃									8681	10821	12960	
P										2452	2576	2735	

注：冷凝器出口过冷度8.3K，过热度11.1K
Note: Condenser Outlet Subcooling 8.3K, Subheating 11.1K

制热量
Heating Capacity

WW R134a
带喷气增焓 EVI

R134a WW
带喷气增焓 EVI

制热量
Heating Capacity

制热量 HEATING CAPACITY

型号Model	项目Item (W)	Tc/Te	-20℃	-15℃	-10℃	-5℃	0℃	5℃	10℃	15℃	20℃	25℃
WW94KE-TFD-GV1	Q	85℃						19341	21944	24792	27940	31446
	P						8559	8854	9133	9388	9610	
	Q	80℃	8284	10437	12577	14761	17046	19489	22146	25075	28333	31976
	P		6435	6664	6919	7189	7466	7743	8009	8258	8480	8666
	Q	75℃	8536	10617	12712	14879	17174	19655	22378	25400	28778	32569
	P		5802	6021	6262	6516	6774	7029	7272	7494	7686	7840
	Q	70℃	8754	10774	12836	14997	17314	19844	22643	25769	29279	33229
	P		5243	5455	5686	5927	6171	6408	6630	6829	6996	7122
	Q	65℃	8942	10912	12952	15118	17468	20058	22945	26186	29839	33959
	P		4745	4953	5178	5411	5644	5867	6073	6253	6398	6500
	Q	60℃	9102	11034	13062	15245	17639	20300	23286	26653	30459	34761
	P		4297	4506	4729	4958	5183	5396	5590	5754	5881	5963
	Q	55℃	9238	11142	13171	15381	17829	20573	23669	27174	31145	35638
	P		3889	4102	4327	4555	4776	4984	5168	5321	5435	5499
	Q	50℃	9352	11239	13279	15528	18042	20880	24097	27750	31897	36594
	P		3508	3730	3961	4191	4414	4619	4798	4944	5047	5099
	Q	45℃	9447	11329	13391	15690	18281	21223	24572	28385	32719	37631
	P		3145	3379	3619	3857	4083	4290	4468	4610	4707	4750
	Q	40℃	9526	11414	13510	15869	18549	21607	25099	29083	33615	
	P		2787	3038	3291	3539	3774	3986	4168	4310	4404	
	Q	35℃	9592	11498	13637	16069	18848	22032	25679	29845		
	P		2425	2695	2965	3228	3475	3696	3885	4031		
	Q	30℃	9649	11582	13777	16291	19181	22504	26316			
	P		2045	2339	2631	2913	3175	3410	3608			
	Q	85℃						22494	25521	28832	32494	36572
	P							9954	10297	10621	10918	11177
	Q	80℃	9635	12138	14627	17167	19824	22665	25756	29162	32951	37188
	P		7483	7751	8046	8360	8683	9005	9315	9604	9862	10079
	Q	75℃	9927	12347	14784	17304	19974	22859	26025	29540	33469	37878
	P		6748	7003	7283	7578	7879	8175	8457	8715	8939	9118
	Q	70℃	10181	12530	14928	17442	20136	23078	26334	29970	34051	38645
	P		6097	6344	6612	6893	7176	7452	7711	7942	8136	8283
Q	65℃	10399	12691	15063	17582	20315	23327	26685	30454	34702	39494	
P		5518	5761	6022	6293	6564	6824	7063	7272	7441	7559	
Q	60℃	10586	12832	15192	17730	20514	23609	27081	30998	35424	40427	
P		4998	5241	5500	5766	6028	6276	6501	6692	6840	6935	
Q	55℃	10743	12958	15317	17888	20735	23926	27526	31603	36221	41447	
P		4522	4771	5032	5297	5555	5796	6011	6189	6320	6396	
Q	50℃	10876	13071	15444	18059	20983	24283	28024	32273	37096	42559	
P		4080	4338	4606	4875	5133	5372	5580	5750	5870	5930	
Q	45℃	10986	13176	15574	18247	21261	24682	28577	33012	38052	43765	
P		3657	3930	4209	4485	4749	4989	5197	5362	5474	5525	
Q	40℃	11079	13275	15712	18455	21572	25128	29190	33823	39094		
P		3242	3533	3827	4116	4389	4636	4847	5012	5122		
Q	35℃	11156	13372	15860	18688	21920	25624	29865	34709			
P		2820	3134	3449	3755	4041	4299	4518	4688			
Q	30℃	11221	13470	16023	18947	22308	26172	30605				
P		2379	2721	3060	3387	3692	3965	4197				

注: 冷凝器出口过冷度8.3K, 过热度11.1K
Note: Condenser Outlet Subcooling8.3K,Subheating 11.1K

制热量 HEATING CAPACITY

型号Model	项目Item (W)	Tc/Te	-20℃	-15℃	-10℃	-5℃	0℃	5℃	10℃	15℃	20℃	25℃
WW125KE-TFD-GV1	Q	85℃						25296	28701	32424	36542	41128
	P						11194	11579	11944	12278	12569	
	Q	80℃	10835	13650	16449	19306	22294	25489	28964	32795	37056	41820
	P		8416	8716	9049	9402	9765	10126	10475	10800	11090	11334
	Q	75℃	11164	13885	16626	19460	22462	25706	29268	33220	37638	42596
	P		7589	7875	8190	8522	8860	9193	9511	9801	10052	10254
	Q	70℃	11449	14091	16788	19615	22645	25953	29615	33703	38293	43460
	P		6857	7134	7436	7752	8070	8381	8671	8931	9150	9315
	Q	65℃	11695	14272	16940	19773	22846	26233	30009	34248	39025	44414
	P		6206	6478	6773	7077	7381	7674	7943	8178	8368	8501
	Q	60℃	11904	14431	17084	19939	23069	26550	30455	34859	39837	45463
	P		5620	5894	6185	6484	6778	7058	7310	7526	7692	7798
	Q	55℃	12082	14572	17225	20116	23318	26907	30956	35540	40733	46611
	P		5086	5365	5659	5957	6247	6518	6759	6960	7108	7193
	Q	50℃	12231	14700	17368	20309	23597	27308	31515	36293	41717	47861
	P		4588	4879	5180	5482	5772	6041	6276	6466	6601	6669
	Q	45℃	12355	14817	17514	20520	23910	27757	32137	37124	42793	49217
	P		4113	4419	4733	5044	5340	5611	5844	6030	6156	6213
	Q	40℃	12459	14929	17669	20755	24260	28259	32826	38036	43964	
	P		3646	3973	4304	4629	4936	5213	5451	5637	5760	
	Q	35℃	12546	15038	17836	21016	24651	28816	33585	39033		
	P		3171	3524	3878	4222	4545	4835	5081	5272		
	Q	30℃	12619	15148	18019	21307	25087	29432	34418			
	P		2675	3059	3441	3809	4152	4459	4719			
	Q	85℃						29058	32968	37246	41976	47244
	P							12859	13301	13721	14104	14438
	Q	80℃	12446	15680	18895	22176	25609	29279	33271	37672	42566	48039
	P		9667	10012	10394	10800	11217	11632	12033	12406	12739	13020
	Q	75℃	12824	15950	19098	22354	25802	29529	33620	38160	43235	48931
	P		8717	9046	9408	9789	10178	10561	10925	11258	11547	11779
	Q	70℃	13152	16187	19285	22531	26012	29813	34018	38715	43988	49922
	P		7877	8195	8542	8905	9271	9627	9961	10260	10510	10700
Q	65℃	13434	16394	19459	22713	26243	30134	34472	39341	44828	51018	
P		7128	7442	7780	8130	8479	8815	9124	9394	9612	9765	
Q	60℃	13674	16577	19625	22904	26500	30498	34984	40043	45761	52223	
P		6456	6770	7105	7448	7786	8107	8397	8645	8836	8958	
Q	55℃	13878	16739	19787	23107	26786	30908	35559	40825	46790	53542	
P		5842	6163	6501	6843	7176	7487	7765	7995	8165	8262	
Q	50℃	14049	16886	19950	23329	27106	31369	36202	41690	47921	54978	
P		5271	5604	5951	6297	6631	6939	7209	7428	7582	7661	
Q	45℃	14192	17021	20119	23572	27465	31885	36916	42645	49156	56536	
P		4725	5077	5437	5794	6134	6445	6713	6927	7072	7137	
Q	40℃	14312	17149	20297	23841	27867	32461	37708	43693	50502		
P		4188	4564	4944	5317	5670	5989	6261	6475	6617		
Q	35℃	14411	17274	20488	24141	28316	33101	38579	44838			
P		3643	4048	4455	4850	5221	5553	5836	6056			
Q	30℃	14496	17400	20698	24476	28817	33809	39536				
P		3073	3514	3953	4376	4770	5123	5421				

注: 冷凝器出口过冷度8.3K, 过热度11.1K
Note: Condenser Outlet Subcooling8.3K,Subheating 11.1K

制热量

Heating Capacity

WW

R134a

带喷气增焓 EVI

R134a

WW

带喷气增焓 EVI

制热量

Heating Capacity

制热量 HEATING CAPACITY

型号Model	项目Item (W)	Tc/Te	-20℃	-15℃	-10℃	-5℃	0℃	5℃	10℃	15℃	20℃	25℃
WW154KE-TFD-GV1	Q	85℃						31829	36113	40799	45980	51750
	P							14085	14570	15029	15449	15815
	Q	80℃	13633	17176	20698	24292	28052	32072	36445	41265	46626	52622
	P		10589	10967	11386	11830	12287	12742	13181	13590	13955	14262
	Q	75℃	14047	17472	20920	24486	28264	32346	36827	41800	47359	53598
	P		9549	9909	10305	10723	11148	11568	11967	12332	12649	12903
	Q	70℃	14406	17731	21124	24681	28493	32657	37263	42408	48184	54684
	P		8628	8977	9357	9754	10155	10545	10911	11238	11513	11721
	Q	65℃	14715	17958	21315	24880	28746	33009	37760	43094	49104	55885
	P		7808	8152	8522	8905	9288	9656	9994	10290	10529	10697
	Q	60℃	14979	18158	21497	25088	29027	33407	38321	43863	50126	57205
	P		7072	7416	7783	8159	8529	8880	9198	9469	9679	9813
	Q	55℃	15202	18336	21674	25312	29341	33856	38951	44719	51254	58649
	P		6399	6751	7121	7495	7860	8202	8505	8757	8944	9050
	Q	50℃	15390	18496	21853	25554	29692	34361	39655	45667	52492	60222
	P		5773	6139	6518	6898	7263	7601	7896	8136	8306	8391
	Q	45℃	15546	18644	22038	25820	30085	34926	40438	46713	53845	61929
	P		5175	5561	5956	6347	6719	7060	7354	7587	7747	7817
	Q	40℃	15677	18784	22233	26115	30525	35557	41304	47860	55319	
	P		4587	4999	5416	5825	6211	6560	6859	7093	7248	
	Q	35℃	15786	18921	22443	26443	31017	36258	42259	49115		
	P		3990	4435	4880	5313	5718	6083	6393	6633		
	Q	30℃	15878	19060	22673	26810	31566	37034	43307			
	P		3366	3850	4330	4793	5225	5611	5938			
WW170KE-TFD-GV1	Q	85℃						37906	43008	48588	54758	61630
	P							16774	17352	17899	18399	18835
	Q	80℃	16236	20455	24649	28929	33407	38195	43403	49143	55528	62668
	P		12611	13061	13559	14089	14633	15174	15697	16184	16619	16984
	Q	75℃	16729	20807	24914	29161	33659	38521	43857	49780	56401	63830
	P		11372	11801	12272	12770	13277	13776	14252	14686	15063	15366
	Q	70℃	17156	21115	25157	29392	33933	38891	44377	50504	57382	65124
	P		10275	10690	11143	11616	12094	12558	12994	13384	13711	13958
	Q	65℃	17524	21386	25384	29629	34234	39310	44969	51321	58479	66554
	P		9299	9708	10149	10605	11061	11499	11902	12255	12539	12739
	Q	60℃	17838	21624	25600	29878	34569	39784	45636	52236	59696	68126
	P		8422	8832	9269	9716	10157	10576	10955	11277	11526	11686
	Q	55℃	18104	21836	25812	30144	34942	40319	46387	53256	61038	69846
	P		7621	8040	8480	8926	9361	9767	10129	10429	10651	10778
	Q	50℃	18328	22028	26025	30432	35360	40921	47225	54386	62513	71719
	P		6876	7311	7763	8214	8650	9052	9404	9689	9891	9993
	Q	45℃	18514	22204	26245	30749	35829	41594	48158	55631	64125	73752
	P		6163	6622	7093	7558	8002	8407	8758	9036	9225	9310
	Q	40℃	18670	22370	26477	31101	36353	42345	49190	56997	65880	
	P		5463	5953	6450	6937	7396	7812	8168	8447	8631	
	Q	35℃	18799	22534	26727	31492	36939	43180	50327	58491		
	P		4752	5281	5812	6327	6810	7245	7613	7900		
	Q	30℃	18910	22699	27001	31929	37592	44104	51575			
	P		4009	4585	5157	5708	6222	6682	7072			

注：冷凝器出口过冷度8.3K,过热度11.1K

Note: Condenser Outlet Subcooling 8.3K, Superheating 11.1K

制热量 HEATING CAPACITY

型号Model	项目Item (W)	Tc/Te	-20℃	-15℃	-10℃	-5℃	0℃	5℃	10℃	15℃	20℃	25℃
WW250KE-TWD-GV1	Q	85℃						49496	56157	63443	71500	80473
	P							21903	22657	23371	24024	24593
	Q	80℃	21200	26709	32186	37774	43621	49872	56673	64168	72505	81828
	P		16467	17055	17705	18396	19106	19814	20496	21132	21700	22177
	Q	75℃	21844	27169	32531	38077	43950	50299	57266	65000	73645	83346
	P		14849	15409	16025	16674	17336	17988	18609	19176	19669	20064
	Q	70℃	22402	27571	32849	38379	44308	50782	57946	65945	74927	85035
	P		13417	13959	14550	15168	15791	16398	16967	17476	17903	18226
	Q	65℃	22882	27925	33145	38688	44701	51329	58717	67012	76358	86902
	P		12142	12676	13252	13848	14443	15015	15541	16001	16373	16633
	Q	60℃	23293	28236	33428	39013	45138	51948	59590	68207	77947	88955
	P		10997	11532	12102	12687	13263	13809	14304	14725	15050	15259
	Q	55℃	23640	28513	33704	39360	45626	52647	60569	69539	79701	91201
	P		9951	10498	11073	11656	12223	12754	13226	13618	13908	14073
	Q	50	23931	28762	33982	39737	46172	53432	61664	71014	81626	93647
	P		8978	9546	10136	10726	11294	11819	12279	12652	12916	13049
	Q	45	24175	28992	34269	40151	46783	54311	62882	72640	83731	96301
	P		8048	8647	9262	9869	10449	10978	11435	11798	12046	12156
	Q	40	24378	29210	34572	40609	47468	55292	64229	74424	86023	
	P		7133	7773	8422	9057	9658	10201	10665	11029	11270	
	Q	35	24547	29423	34899	41120	48233	56382	65714	76374		
	P		6205	6896	7589	8262	8892	9459	9941	10315		
	Q	30	24691	29639	35257	41691	49086	57589	67344			
	P		5234	5986	6733	7453	8125	8726	9234			
WW300KE-TWD-GV1	Q	85						60918	69116	78084	88000	99044
	P							26957	27885	28764	29568	30269
	Q	80	26092	32873	39613	46492	53688	61381	69751	78976	89237	100711
	P		20267	20990	21791	22642	23516	24386	25226	26009	26707	27295
	Q	75	26884	33439	40038	46863	54093	61906	70482	80000	90640	102580
	P		18276	18965	19723	20522	21337	22139	22903	23602	24208	24694
	Q	70	27572	33934	40429	47235	54533	62500	71318	81164	92217	104659
	P		16513	17180	17907	18668	19435	20182	20882	21508	22034	22432
	Q	65	28163	34369	40794	47617	55017	63174	72268	82476	93980	106957
	P		14944	15601	16310	17044	17776	18480	19128	19694	20151	20472
	Q	60	28668	34752	41142	48016	55555	63936	73341	83947	95935	109483
	P		13534	14193	14895	15615	16324	16996	17605	18123	18524	18780
	Q	55	29095	35093	41482	48443	56155	64796	74547	85586	98093	112247
	P		12248	12921	13629	14345	15044	15697	16278	16760	17117	17321
	Q	50	29454	35400	41824	48907	56826	65763	75894	87401	100463	115258
	P		11050	11749	12475	13201	13901	14547	15113	15572	15896	16060
	Q	45	29754	35683	42177	49416	57579	66845	77393	89403	103053	118524
	P		9905	10643	11399	12147	12860	13511	14074	14521	14826	14962
	Q	40	30003	35951	42550	49981	58422	68052	79051	91599	105874	
	P		8779	9567	10366	11148	11886	12555	13126	13574	13871	
	Q	35	30212	36213	42953	50610	5					

制热量
Heating Capacity

WW R410A
不带喷气增焓W/O EVI

R410A WW
不带喷气增焓W/O EVI

制热量
Heating Capacity

制热量 HEATING CAPACITY

型号Model	项目Item (W)	Tc Te	-20℃	-15℃	-10℃	-5℃	0℃	5℃	10℃	15℃
WW28KP-TFD-GN1	Q	65℃						8157	9281	10589
	P						2881	2874	2872	
	Q	60℃					7326	8359	9558	10945
	P						2548	2544	2550	
	Q	55℃				6530	7480	8579	9848	11308
	P					2253	2252	2254	2260	2274
	Q	50℃		5008	5770	6644	7652	8812	10147	11676
	P			1987	1990	1992	1996	2003	2016	2037
	Q	45℃	4335	5046	5854	6778	7838	9055	10450	12042
	P		1746	1754	1760	1766	1774	1786	1804	1832
	Q	40℃	4361	5109	5957	6925	8033	9302	10752	12404
	P		1541	1551	1559	1567	1579	1595	1619	1652
	Q	35℃	4411	5192	6075	7083	8234	9549	11050	
	P		1358	1369	1378	1389	1404	1425	1453	
	Q	30℃	4482	5290	6204	7246	8435	9793		
	P		1192	1202	1213	1226	1243	1268		
	Q	25℃	4569	5399	6339	7410	8633			
	P		1034	1045	1056	1070	1090			
	Q	20℃	4667	5514	6476	7572	8823			
	P		879	889	900	916	937			
WW34KP-TFD-GN1	Q	65℃						10998	12514	14277
	P						3885	3875	3873	
	Q	60℃					9878	11271	12888	14757
	P						3436	3430	3430	3439
	Q	55℃				8805	10085	11567	13279	15247
	P					3038	3036	3038	3047	3066
	Q	50℃		6752	7780	8959	10317	11882	13681	15742
	P			2679	2683	2686	2691	2701	2718	2746
	Q	45℃	5844	6804	7893	9138	10568	12209	14089	16237
	P		2354	2365	2373	2381	2392	2408	2433	2470
	Q	40℃	5879	6889	8032	9337	10831	12542	14497	16724
	P		2078	2091	2102	2113	2129	2151	2183	2228
	Q	35℃	5948	7000	8192	9550	11102	12876	14899	
	P		1832	1846	1859	1873	1893	1921	1959	
	Q	30℃	6043	7132	8365	9769	11373	13204		
	P		1607	1621	1636	1653	1677	1709		
	Q	25℃	6160	7279	8547	9991	11640			
	P		1394	1408	1424	1443	1470			
	Q	20℃	6293	7435	8731	10209	11896			
	P		1185	1198	1214	1235	1264			

型号Model	项目Item (W)	Tc Te	-20℃	-15℃	-10℃	-5℃	0℃	5℃	10℃	15℃
WW48KP-TFD-GN1	Q	65℃						14664	16685	19036
	P						5179	5167	5164	
	Q	60℃					13170	15028	17184	19676
	P						4581	4574	4573	4585
	Q	55℃				11739	13447	15423	17705	20329
	P					4050	4048	4051	4063	4088
	Q	50℃		9003	10373	11945	13756	15843	18242	20990
	P			3571	3578	3582	3588	3601	3624	3661
	Q	45℃	7792	9072	10524	12184	14090	16278	18786	21649
	P		3139	3154	3165	3175	3189	3210	3244	3293
	Q	40℃	7839	9185	10710	12450	14442	16723	19329	22299
	P		2770	2788	2802	2818	2838	2868	2910	2971
	Q	35℃	7930	9334	10922	12733	14802	17167	19865	
	P		2442	2461	2478	2498	2524	2561	2613	
	Q	30℃	8058	9510	11153	13026	15164	17605		
	P		2142	2162	2181	2204	2235	2279		
	Q	25℃	8214	9705	11396	13322	15520			
	P		1859	1878	1898	1924	1960			
	Q	20℃	8390	9913	11641	13612	15861			
	P		1579	1598	1619	1646	1685			
WW61KP-TFD-GN1	Q	65℃						19521	22213	25342
	P						6895	6878	6874	
	Q	60℃					17533	20005	22876	26193
	P						6099	6089	6088	6103
	Q	55℃				15628	17901	20532	23570	27063
	P					5392	5389	5393	5409	5442
	Q	50℃		11985	13809	15902	18313	21091	24284	27943
	P			4755	4763	4768	4777	4794	4824	4874
	Q	45℃	10374	12078	14010	16221	18758	21671	25008	28820
	P		4179	4199	4213	4226	4245	4274	4318	4383
	Q	40℃	10436	12228	14257	16573	19225	22262	25732	29685
	P		3688	3711	3730	3751	3778	3818	3875	3954
	Q	35℃	10557	12425	14540	16950	19705	22854	26445	
	P		3251	3276	3299	3325	3360	3409	3478	
	Q	30℃	10727	12660	14848	17341	20187	23436		
	P		2852	2878	2903	2934	2976	3033		
	Q	25℃	10934	12920	15171	17734	20661			
	P		2474	2500	2527	2562	2609			
	Q	20℃	11169	13197	15498	18121	21116			
	P		2103	2127	2155	2192	2243			

制热量 HEATING CAPACITY

注：冷凝器出口过冷度8.3K, 过热度11.1K

Note: Condenser Outlet Subcooling8.3K,Subheating 11.1K

注：冷凝器出口过冷度8.3K, 过热度11.1K

Note: Condenser Outlet Subcooling8.3K,Subheating 11.1K

制热量 Heating Capacity

WW **R410A**
不带喷气增焓W/O EVI

制热量 HEATING CAPACITY

型号Model	项目Item (W)	Tc Te	-20℃	-15℃	-10℃	-5℃	0℃	5℃	10℃	15℃
WW72KP-TFD-GN1	Q	65℃						20499	23325	26611
	P						7241	7222	7218	
	Q	60℃					18411	21007	24021	27505
	P						6404	6393	6393	6409
	Q	55℃				16411	18798	21560	24750	28419
	P					5662	5659	5663	5680	5715
	Q	50℃		12585	14500	16698	19230	22147	25500	29342
	P			4993	5001	5007	5016	5034	5066	5118
	Q	45℃	10893	12682	14712	17033	19697	22756	26261	30263
	P		4388	4409	4424	4438	4458	4488	4534	4603
	Q	40℃	10959	12840	14971	17403	20188	23377	27021	31172
	P		3873	3897	3917	3939	3967	4009	4069	4153
	Q	35℃	11086	13048	15268	17799	20692	23999	27770	
	P		3414	3440	3464	3492	3529	3580	3652	
	Q	30℃	11264	13293	15591	18209	21198	24610		
	P		2995	3022	3049	3081	3125	3185		
	Q	25℃	11482	13567	15930	18623	21696			
	P		2598	2625	2654	2690	2739			
Q	20℃	11729	13858	16274	19028	22173				
P		2208	2233	2263	2302	2356				
WW81KP-TFD-GN1	Q	65℃						23584	26836	30617
	P						8330	8309	8305	
	Q	60℃					21182	24169	27637	31645
	P						7368	7356	7356	7374
	Q	55℃				18881	21627	24805	28476	32696
	P					6514	6511	6516	6535	6575
	Q	50℃		14479	16683	19212	22124	25480	29339	33758
	P			5744	5754	5761	5771	5791	5828	5888
	Q	45℃	12533	14591	16926	19597	22662	26181	30214	34818
	P		5048	5073	5090	5106	5128	5163	5217	5296
	Q	40℃	12608	14773	17225	20023	23227	26896	31088	35864
	P		4456	4484	4507	4531	4564	4612	4681	4778
	Q	35℃	12755	15011	17566	20478	23807	27611	31950	
	P		3928	3958	3986	4018	4060	4119	4202	
	Q	30℃	12959	15294	17938	20950	24389	28314		
	P		3445	3477	3508	3545	3595	3665		
	Q	25℃	13210	15609	18328	21426	24961			
	P		2989	3020	3053	3095	3152			
Q	20℃	13494	15943	18723	21892	25510				
P		2540	2570	2603	2648	2710				

注：冷凝器出口过冷度8.3K, 过热度11.1K
Note: Condenser Outlet Subcooling8.3K, Subheating 11.1K

R410A **WW**
不带喷气增焓W/O EVI

制热量 Heating Capacity

制热量 HEATING CAPACITY

型号Model	项目Item (W)	Tc Te	-20℃	-15℃	-10℃	-5℃	0℃	5℃	10℃	15℃
WW94KP-TFD-GN1	Q	65℃						25814	29373	33512
	P						9118	9095	9090	
	Q	60℃					23185	26455	30250	34637
	P						8065	8051	8051	8071
	Q	55℃				20666	23672	27151	31168	35788
	P					7130	7127	7132	7153	7196
	Q	50℃		15848	18261	21028	24217	27890	32113	36951
	P			6287	6298	6305	6317	6339	6379	6445
	Q	45℃	13718	15971	18527	21450	24805	28657	33071	38111
	P		5526	5552	5571	5589	5613	5651	5710	5797
	Q	40℃	13800	16170	18854	21916	25423	29439	34028	39255
	P		4877	4908	4933	4960	4996	5048	5124	5229
	Q	35℃	13961	16431	19227	22415	26058	30222	34971	
	P		4299	4332	4363	4397	4444	4509	4599	
	Q	30℃	14185	16741	19635	22931	26695	30992		
	P		3771	3805	3839	3880	3935	4011		
	Q	25℃	14459	17085	20061	23452	27321			
	P		3272	3306	3342	3388	3450			
Q	20℃	14770	17451	20494	23963	27923				
P		2780	2813	2849	2898	2966				
WW108KP-TFD-GN1	Q	65℃						30213	34379	39223
	P						10672	10645	10639	
	Q	60℃					27136	30963	35406	40540
	P						9439	9423	9423	9446
	Q	55℃				24188	27706	31778	36480	41887
	P					8345	8341	8347	8372	8423
	Q	50℃		18549	21373	24612	28343	32642	37585	43247
	P			7359	7371	7380	7393	7419	7467	7544
	Q	45℃	16056	18693	21684	25105	29032	33540	38706	44605
	P		6468	6498	6520	6541	6570	6615	6683	6784
	Q	40℃	16152	18925	22066	25651	29756	34456	39827	45945
	P		5708	5744	5773	5805	5848	5909	5997	6120
	Q	35℃	16340	19231	22504	26235	30499	35372	40930	
	P		5032	5071	5106	5147	5201	5277	5383	
	Q	30℃	16602	19594	22981	26839	31245	36273		
	P		4414	4454	4494	4542	4606	4695		
	Q	25℃	16923	19997	23480	27448	31977			
	P		3829	3869	3911	3965	4038			
Q	20℃	17287	20425	23986	28046	32681				
P		3254	3292	3335	3392	3472				

注：冷凝器出口过冷度8.3K, 过热度11.1K
Note: Condenser Outlet Subcooling8.3K, Subheating 11.1K

制热量

Heating Capacity

WW

R410A

不带喷气增焓W/O EVI

R410A

WW

不带喷气增焓W/O EVI

制热量

Heating Capacity

制热量 HEATING CAPACITY

型号 Model	项目 Item (W)	Tc\Te	-20°C	-15°C	-10°C	-5°C	0°C	5°C	10°C	15°C
WW125KP-TFD-GN1	Q	65°C						34215	38933	44418
	P							12085	12055	12048
	Q	60°C					30731	35064	40095	45910
	P						10689	10672	10671	10698
	Q	55°C				27392	31376	35987	41312	47435
	P					9450	9446	9453	9481	9538
	Q	50°C		21006	24203	27872	32098	36966	42564	48976
	P			8333	8348	8357	8372	8402	8456	8543
	Q	45°C	18182	21169	24556	28430	32877	37983	43833	50514
	P		7324	7359	7384	7408	7440	7491	7568	7683
	Q	40°C	18292	21432	24989	29049	33697	39019	45102	52031
	P		6464	6505	6538	6574	6622	6691	6791	6931
	Q	35°C	18504	21778	25485	29710	34538	40057	46352	
	P		5698	5742	5782	5829	5890	5976	6096	
	Q	30°C	18801	22189	26024	30394	35383	41078		
	P		4998	5044	5089	5143	5216	5317		
	Q	25°C	19165	22646	26590	31084	36213			
	P		4337	4381	4430	4490	4573			
Q	20°C	19577	23130	27163	31761	37010				
P		3685	3728	3777	3842	3932				
WW144KP-TFD-GN1	Q	65°C						37912	43139	49217
	P							13391	13358	13350
	Q	60°C					34051	38852	44427	50870
	P						11844	11825	11824	11853
	Q	55°C				30351	34766	39875	45775	52560
	P					10471	10467	10474	10505	10569
	Q	50°C		23276	26818	30883	35565	40960	47162	54267
	P			9234	9249	9260	9277	9310	9369	9466
	Q	45°C	20147	23456	27209	31502	36429	42087	48569	55971
	P		8115	8154	8182	8208	8244	8300	8386	8513
	Q	40°C	20268	23748	27689	32187	37338	43235	49975	57652
	P		7163	7207	7245	7284	7337	7414	7525	7680
	Q	35°C	20503	24131	28238	32919	38270	44385	51359	
	P		6314	6363	6407	6458	6526	6622	6755	
	Q	30°C	20832	24586	28836	33678	39206	45516		
	P		5538	5589	5639	5699	5780	5891		
	Q	25°C	21235	25092	29463	34442	40125			
	P		4805	4855	4908	4975	5067			
Q	20°C	21692	25629	30098	35192	41008				
P		4083	4131	4185	4257	4357				

注：冷凝器出口过冷度8.3K, 过热度11.1K
Note: Condenser Outlet Subcooling 8.3K, Subheating 11.1K

制热量 HEATING CAPACITY

型号 Model	项目 Item (W)	Tc\Te	-20°C	-15°C	-10°C	-5°C	0°C	5°C	10°C	15°C
WW154KP-TFD-GN1	Q	65°C						43716	49744	56752
	P							15441	15403	15394
	Q	60°C					39264	44801	51229	58658
	P						13658	13635	13634	13668
	Q	55°C				34998	40088	45980	52783	60607
	P					12075	12069	12078	12113	12187
	Q	50°C		26839	30924	35611	41010	47231	54383	62575
	P			10647	10665	10678	10697	10735	10804	10915
	Q	45°C	23231	27047	31375	36325	42007	48530	56005	64540
	P		9358	9403	9434	9465	9506	9571	9670	9816
	Q	40°C	23371	27383	31928	37115	43054	49854	57626	66478
	P		8259	8311	8354	8400	8461	8549	8677	8856
	Q	35°C	23642	27826	32561	37959	44129	51180	59223	
	P		7281	7337	7388	7447	7525	7635	7789	
	Q	30°C	24022	28350	33251	38834	45208	52484		
	P		6386	6444	6502	6571	6664	6793		
	Q	25°C	24487	28934	33973	39715	46269			
	P		5541	5598	5660	5737	5842			
Q	20°C	25013	29553	34706	40580	47287				
P		4709	4763	4826	4908	5024				
WW170KP-TFD-GN1	Q	65°C						51262	58330	66547
	P							18107	18061	18051
	Q	60°C					46041	52534	60071	68783
	P						16015	15988	15988	16027
	Q	55°C				41039	47008	53917	61894	71068
	P					14159	14152	14163	14204	14291
	Q	50°C		31472	36262	41758	48089	55383	63770	73376
	P			12485	12506	12521	12544	12588	12668	12799
	Q	45°C	27241	31715	36790	42595	49257	56907	65672	75681
	P		10973	11026	11063	11099	11147	11223	11339	11511
	Q	40°C	27405	32110	37439	43522	50485	58459	67572	77953
	P		9685	9745	9796	9850	9921	10025	10175	10384
	Q	35°C	27723	32629	38182	44511	51746	60014	69445	
	P		8537	8603	8663	8732	8824	8953	9133	
	Q	30°C	28168	33244	38990	45537	53012	61544		
	P		7488	7556	7624	7705	7815	7966		
	Q	25°C	28713	33928	39838	46570	54255			
	P		6497	6564	6636	6727	6851			
Q	20°C	29330	34654	40696	47585	55449				
P		5521	5585	5658	5756	5891				

注：冷凝器出口过冷度8.3K, 过热度11.1K
Note: Condenser Outlet Subcooling 8.3K, Subheating 11.1K

制热量

Heating Capacity

WW

R410A

不带喷气增焓 W/O EVI

制热量 HEATING CAPACITY

型号 Model	项目 Item (W)	Tc Te	-20°C	-15°C	-10°C	-5°C	0°C	5°C	10°C	15°C
WW235KP-TWD-GN1	Q	65°C						64979	73938	84354
	P							22952	22894	22881
	Q	60°C					58361	66591	76145	87187
	P						20300	20267	20266	20316
	Q	55°C				52021	59586	68344	78455	90084
	P					17947	17939	17952	18005	18114
	Q	50°C		39893	45965	52932	60957	70203	80833	93010
	P			15826	15853	15871	15900	15956	16058	16224
	Q	45°C	34530	40202	46635	53992	62438	72134	83244	95931
	P		13909	13976	14023	14068	14130	14226	14373	14591
	Q	40°C	34738	40702	47457	55167	63994	74102	85653	98812
	P		12276	12353	12417	12485	12576	12707	12897	13163
	Q	35°C	35141	41359	48398	56422	65592	76073	88027	
	P		10822	10905	10981	11069	11186	11349	11577	
	Q	30°C	35705	42139	49423	57721	67196	78011		
	P		9492	9578	9664	9767	9906	10097		
	Q	25°C	36396	43006	50497	59032	68773			
	P		8236	8321	8412	8527	8684			
Q	20°C	37179	43927	51586	60318	70286				
P		6999	7080	7173	7296	7467				
WW292KP-TWD-GN1	Q	65°C						80284	91353	104223
	P							28358	28287	28270
	Q	60°C					72108	82276	94081	107724
	P						25082	25040	25039	25101
	Q	55°C				64274	73622	84441	96935	111303
	P					22175	22165	22181	22246	22381
	Q	50°C		49290	56792	65400	75315	86739	99873	114918
	P			19554	19587	19610	19645	19715	19841	20045
	Q	45°C	42663	49671	57619	66710	77144	89125	102852	118527
	P		17186	17268	17326	17382	17458	17576	17759	18028
	Q	40°C	42920	50289	58636	68161	79068	91556	105829	122086
	P		15168	15263	15341	15426	15538	15700	15935	16264
	Q	35°C	43418	51101	59798	69711	81042	93991	108761	
	P		13371	13474	13568	13676	13820	14022	14304	
	Q	30°C	44116	52065	61065	71317	83024	96386		
	P		11728	11835	11940	12068	12239	12476		
	Q	25°C	44969	53136	62392	72936	84971			
	P		10175	10281	10394	10536	10729			
Q	20°C	45936	54274	63736	74525	86841				
P		8647	8747	8862	9014	9226				

注：冷凝器出口过冷度8.3K, 过热度11.1K
 Note: Condenser Outlet Subcooling8.3K, Subheating 11.1K

R410A

带喷气增焓 EVI

WW

制热量

Heating Capacity

制热量 HEATING CAPACITY

型号 Model	项目 Item (W)	Tc Te	-35°C	-30°C	-25°C	-20°C	-15°C	-10°C	-5°C	0°C	5°C	10°C	15°C	20°C
WW50HP-TFD-GV1	Q	65°C												10776
	P													3479
	Q	60°C		2831	3724	4663	5641	6646	7669	8700	9730	10749	11747	12714
	P			2919	2970	3005	3026	3036	3037	3033	3027	3020	3017	3020
	Q	55°C		3197	4038	4925	5848	6798	7765	8739	9711	10670	11608	12513
	P			2542	2593	2628	2649	2659	2662	2660	2655	2651	2651	2657
	Q	50°C	2641	3396	4206	5062	5953	6869	7801	8740	9675	10596	11495	12360
	P		2165	2235	2287	2323	2345	2358	2363	2363	2362	2361	2365	2375
	Q	45°C	2738	3485	4287	5132	6012	6916	7835	8760	9679	10584	11465	12312
	P		1916	1988	2041	2079	2104	2119	2127	2132	2134	2138	2147	2163
	Q	40°C	2760	3521	4335	5192	6082	6996	7923	8855	9781	10691	11576	12425
	P		1715	1788	1844	1885	1914	1933	1945	1954	1962	1972	1986	2008
	Q	35°C	2765	3561	4409	5299	6221	7166	8123	9083	10037	10974	11884	12758
	P		1548	1625	1685	1730	1763	1787	1805	1820	1834	1850	1872	1901
	Q	30°C	2809	3661	4565	5509	6485	7482	8491	9501	10504	11489	12446	
	P		1406	1488	1552	1602	1641	1671	1695	1716	1738	1762	1791	
	Q	25°C	2949	3880	4861	5881	6932	8003	9084	10167	11240	12294		
	P		1277	1364	1434	1490	1535	1572	1604	1633	1663	1695		
Q	20°C	3243	4273	5353	6471	7618	8784	9960	11135	12301				
P		1149	1242	1319	1383	1435	1481	1521	1559	1598				
Q	15°C	3747	4899	6098	7335	8600	9883	11175	12465					
P		1012	1112	1197	1269	1330	1384	1434	1482					
Q	10°C	4519	5813	7154	8532	9936	11358	12787						
P		853	962	1056	1137	1208	1272	1332						
WW70HP-TFD-GV1	Q	65°C												14529
	P													4691
	Q	60°C		3818	5021	6288	7605	8961	10340	11731	13120	14493	15838	17142
	P			3935	4005	4052	4080	4093	4095	4090	4081	4072	4068	4071
	Q	55°C		4311	5444	6640	7885	9166	10470	11783	13094	14387	15651	16871
	P			3427	3496	3543	3571	3586	3589	3586	3580	3575	3574	3582
	Q	50°C	3562	4579	5672	6825	8026	9262	10519	11784	13045	14287	15498	16665
	P		2919	3014	3083	3132	3162	3179	3186	3186	3184	3184	3188	3202
	Q	45°C	3692	4699	5780	6919	8106	9325	10564	11811	13051	14271	15458	16600
	P		2584	2680	2752	2803	2837	2857	2869	2874	2878	2883	2895	2916
	Q	40°C	3722	4748	5845	7000	8201	9433	10683	11939	13188	14415	15608	16753
	P		2312	2411	2487	2542	2580	2606	2623	2635	2645	2659	2678	2708
	Q	35°C	3728	4801	5944	7144	8388	9662	10952	12247	13533	14796	16023	17202
	P		2088	2192	2272	2332	2377	2409	2434	2453	2472	2494	2523	2563
	Q	30°C	3787	4937	6155	7428	8744	10088	11448	12811	14163	15491	16782	
	P		1896	2006	2092	2160	2212	2252	2285	2314	2343	2375	2415	
	Q	25°C	3976	5231	6554	7930	9346	10790	12248	13708	15155	16577		
	P		1722	1839	1933	2009	2070	2120	2163	2202	2242	2286		
Q	20°C	4372	5762	7217	8725	10271	11844	13429	15014	16585				
P		1550	1675	1779	1864	1935	1996	2050	2102	2154				
Q	15°C	5052	6605	8222	9890	11596	13326	15068	16807					
P		1364	1500	1614	1710	1793	1866	1933	1998					
Q	10°C	6093	7838	9646	11503	13397	15314	17240						
P		1150	1297	1423	1532	1628	1715	1796						

注：冷凝器出口过冷度8.3K, 过热度11.1K
 Note: Condenser Outlet Subcooling8.3K, Subheating 11.1K

制热量 Heating Capacity

制热量
HEATING CAPACITY

型号Model	项目Item (W)	TclTe	-35℃	-30℃	-25℃	-20℃	-15℃	-10℃	-5℃	0℃	5℃	10℃	15℃	20℃
WW96HP-TFD-GV1	Q	65℃										19372		
	P											6255		
	Q	60℃		5090	6694	8383	10140	11947	13787	15641	17493	19324	21118	22856
	P			5247	5340	5402	5440	5457	5460	5453	5441	5430	5424	5428
	Q	55℃		5748	7259	8853	10513	12221	13960	15711	17458	19183	20868	22495
	P			4569	4661	4724	4762	4781	4786	4781	4773	4766	4766	4776
	Q	50℃	4749	6106	7562	9100	10701	12349	14025	15712	17393	19050	20664	22220
	P		3892	4018	4111	4176	4216	4238	4247	4248	4245	4245	4251	4270
	Q	45℃	4923	6266	7706	9226	10807	12433	14086	15748	17401	19028	20611	22133
	P		3445	3574	3670	3737	3782	3810	3825	3832	3837	3844	3860	3888
	Q	40℃	4962	6330	7793	9334	10934	12577	14244	15919	17583	19220	20810	22338
	P		3082	3215	3316	3389	3440	3475	3497	3513	3527	3545	3571	3611
	Q	35℃	4970	6401	7926	9526	11184	12882	14603	16330	18044	19728	21364	22936
	P		2783	2922	3029	3110	3169	3213	3245	3271	3296	3326	3365	3418
	Q	30℃	5049	6582	8207	9905	11659	13451	15265	17081	18884	20654	22375	
	P		2528	2674	2790	2880	2949	3003	3047	3085	3124	3167	3220	
	Q	25℃	5302	6975	8738	10573	12462	14387	16331	18277	20206	22102		
	P		2296	2452	2577	2679	2760	2826	2883	2936	2989	3048		
	Q	20℃	5830	7683	9623	11633	13695	15792	17906	20019	22114			
	P		2066	2233	2372	2486	2581	2662	2734	2802	2872			
Q	15℃	6736	8807	10963	13187	15461	17768	20090	22410					
P		1819	2000	2152	2281	2391	2488	2578	2664					
Q	10℃	8123	10451	12861	15338	17863	20418	22987						
P		1534	1730	1898	2043	2171	2287	2395						
WW126HP-TFD-GV1	Q	65℃										25789		
	P											8326		
	Q	60℃		6776	8912	11160	13499	15905	18354	20822	23287	25726	28113	30427
	P			6985	7109	7192	7242	7265	7268	7259	7243	7228	7220	7227
	Q	55℃		7652	9664	11786	13996	16269	18584	20915	23241	25537	27780	29946
	P			6083	6205	6288	6339	6364	6371	6365	6355	6345	6344	6359
	Q	50℃	6322	8129	10067	12114	14246	16439	18671	20917	23155	25360	27510	29580
	P		5181	5350	5473	5559	5613	5642	5654	5655	5652	5651	5659	5684
	Q	45℃	6553	8341	10259	12282	14387	16552	18752	20964	23165	25331	27439	29465
	P		4586	4758	4885	4975	5035	5072	5092	5101	5108	5118	5138	5176
	Q	40℃	6606	8427	10375	12425	14556	16743	18963	21192	23408	25586	27704	29737
	P		4103	4280	4414	4512	4580	4626	4656	4677	4696	4719	4754	4807
	Q	35℃	6617	8522	10551	12681	14888	17149	19440	21739	24021	26262	28441	30533
	P		3705	3890	4033	4140	4219	4277	4320	4355	4388	4427	4479	4550
	Q	30℃	6722	8763	10925	13186	15521	17907	20321	22740	25139	27496	29787	
	P		3365	3560	3714	3834	3926	3998	4056	4107	4158	4216	4287	
	Q	25℃	7058	9286	11633	14075	16589	19153	21741	24331	26900	29423		
	P		3056	3264	3431	3566	3674	3763	3839	3909	3979	4058		
	Q	20℃	7761	10227	12810	15486	18231	21023	23837	26650	29439			
	P		2750	2973	3157	3309	3435	3543	3639	3731	3824			
Q	15℃	8968	11724	14594	17555	20583	23654	26745	29833					
P		2421	2662	2865	3036	3183	3313	3432	3547					
Q	10℃	10814	13912	17121	20418	23780	27182	30602						
P		2042	2303	2526	2720	2890	3044	3188						

注: 冷凝器出口过冷度8.3K, 过热度11.1K
Note: Condenser Outlet Subcooling8.3K, Subheating 11.1K

WW R410A 带喷气增焐 EVI

R410A WW 带喷气增焐 EVI

制热量 Heating Capacity

制热量
HEATING CAPACITY

型号Model	项目Item (W)	TclTe	-35℃	-30℃	-25℃	-20℃	-15℃	-10℃	-5℃	0℃	5℃	10℃	15℃	20℃
WW130HP-TFD-GV1	Q	65℃											27081	
	P												8743	
	Q	60℃		7115	9358	11719	14175	16701	19273	21865	24454	27014	29521	31951
	P			7335	7465	7552	7604	7629	7632	7623	7606	7590	7582	7589
	Q	55℃		8036	10148	12376	14696	17084	19514	21963	24405	26816	29171	31446
	P			6388	6516	6603	6657	6683	6690	6684	6673	6663	6662	6677
	Q	50℃	6638	8536	10571	12721	14959	17263	19606	21965	24314	26630	28887	31062
	P		5441	5617	5747	5837	5894	5925	5937	5938	5935	5934	5943	5969
	Q	45℃	6881	8759	10772	12897	15108	17381	19691	22014	24325	26599	28813	30941
	P		4816	4996	5130	5225	5288	5326	5347	5357	5364	5374	5396	5435
	Q	40℃	6937	8849	10894	13048	15285	17581	19913	22254	24580	26868	29091	31226
	P		4309	4494	4635	4738	4809	4857	4889	4911	4931	4955	4992	5047
	Q	35℃	6948	8949	11080	13316	15634	18008	20414	22827	25223	27578	29865	32062
	P		3891	4085	4235	4347	4431	4491	4536	4573	4608	4649	4703	4778
	Q	30℃	7058	9202	11472	13846	16298	18804	21339	23878	26398	28873	31279	
	P		3534	3738	3900	4026	4123	4198	4259	4313	4367	4427	4502	
	Q	25℃	7411	9751	12215	14780	17420	20112	22830	25550	28247	30897		
	P		3209	3427	3603	3744	3858	3951	4031	4104	4179	4261		
	Q	20℃	8149	10739	13452	16262	19144	22075	25030	27985	30913			
	P		2888	3122	3315	3475	3607	3721	3822	3917	4015			
Q	15℃	9417	12311	15325	18434	21613	24838	28084	31327					
P		2543	2795	3008	3188	3343	3479	3604	3724					
Q	10℃	11356	14609	17979	21441	24971	28543	32134						
P		2144	2418	2653	2856	3035	3197	3348						
WW150HP-TFD-GV1	Q	65℃											31157	
	P												10060	
	Q	60℃		8187	10766	13483	16309	19215	22174	25156	28135	31080	33965	36760
	P			8439	8588	8689	8749	8777	8781	8770	8751	8733	8723	8731
	Q	55℃		9245	11675	14239	16909	19656	22452	25269	28078	30852	33562	36179
	P			7349	7497	7597	7659	7689	7697	7690	7677	7666	7665	7682
	Q	50℃	7638	9820	12163	14636	17211	19861	22557	25271	27974	30638	33235	35737
	P		6259	6463	6612	6716	6781	6817	6831	6832	6828	6827	6837	6867
	Q	45℃	7917	10077	12394	14838	17382	19997	22655	25327	27986	30603	33150	35598
	P		5541	5748	5902	6011	6084	6128	6151	6163	6171	6183	6208	6253
	Q	40℃	7981	10181	12534	15012	17586	20228	22910	25603	28280	30912	33470	35927
	P		4957	5171	5333	5451	5533	5589	5625	5650	5673	5701	5743	5807
	Q	35℃	7994	10296	12747	15321	17987	20719	23487	26263	29020	31729	34361	36888
	P		4477	4700	4872	5002	5097	5167	5219	5261	5302	5349	5411	5497
	Q	30℃	8121	10587	13199	15930	18751	21634	24551	27472	30371	33219	35987	
	P		4066	4301	4487	4632	4743	4830	4901	4962	5024	5093	5179	
	Q	25℃	8527	11218	14054	17005	20042	23139	26266	29395	32499	35547		
	P		3692	3943	4145	4308	4439	4546	4638	4722	4807	4902		
	Q	20℃	9376	12356	15476	18709	22026	25398	28798	32197	35567			
	P		3323	3592	3814	3998	4150	4281	4397	4507	4619			
Q	15℃	10834	14164	17632	21209	24867	28577	32311	36042					
P		2925	3216	3461	3668	3846	4002	4146	4285					
Q	10℃	13065	16808	20685	24668	28729	32839	36971						
P</														

制热量

Heating Capacity

制热量 HEATING CAPACITY

型号Model		项目Item (W)	Tc Te	-35°C	-30°C	-25°C	-20°C	-15°C	-10°C	-5°C	0°C	5°C	10°C	15°C	20°C
				WW170HP-TFD-GV1											
Q	65°C											34103			
												11011			
Q	60°C			8961	11784	14758	17851	21032	24271	27535	30795	34019	37176	40236	
		P		9237	9400	9510	9576	9607	9612	9599	9578	9558	9548	9556	
Q	55°C			10119	12779	15585	18507	21514	24575	27658	30733	33770	36736	39600	
		P		8044	8206	8316	8383	8416	8425	8417	8403	8391	8390	8409	
Q	50°C	8360	10749	13313	16020	18839	21739	24690	27660	30619	33535	36378	39116		
		P		6851	7074	7238	7351	7422	7461	7477	7478	7474	7484	7517	
Q	45°C	8666	11030	13566	16241	19026	21888	24797	27722	30633	33497	36284	38964		
		P		6065	6291	6460	6579	6659	6707	6733	6746	6754	6768	6795	6844
Q	40°C	8736	11144	13719	16431	19249	22141	25076	28024	30954	33835	36635	39324		
		P		5426	5660	5837	5966	6056	6117	6157	6184	6209	6240	6286	6356
Q	35°C	8750	11269	13953	16769	19688	22678	25708	28747	31764	34729	37610	40376		
		P		4900	5144	5333	5475	5579	5656	5712	5758	5803	5855	5923	6017
Q	30°C	8889	11588	14447	17436	20524	23680	26872	30070	33243	36360	39390			
		P		4450	4708	4911	5070	5192	5287	5364	5432	5499	5575	5669	
Q	25°C	9333	12279	15383	18612	21938	25327	28750	32175	35572	38909				
		P		4041	4316	4537	4715	4858	4976	5076	5169	5262	5366		
Q	20°C	10263	13524	16940	20478	24109	27800	31521	35241	38930					
		P		3637	3932	4175	4376	4543	4685	4813	4933	5056			
Q	15°C	11858	15504	19299	23214	27218	31279	35367	39450						
		P		3202	3520	3788	4015	4209	4381	4538	4690				
Q	10°C	14301	18397	22641	27001	31446	35945	40467							
		P		2700	3045	3341	3597	3822	4026	4216					
Q	65°C											39915			
												12887			
Q	60°C			10488	13793	17273	20893	24617	28407	32228	36043	39816	43512	47093	
		P		10811	11002	11131	11208	11244	11250	11235	11211	11187	11175	11185	
Q	55°C			11844	14957	18241	21661	25180	28763	32372	35971	39524	42996	46349	
		P		9415	9604	9733	9811	9850	9860	9852	9835	9821	9819	9842	
Q	50°C	9784	12581	15581	18749	22049	25444	28898	32374	35837	39250	42577	45782		
		P		8019	8280	8471	8603	8687	8733	8751	8753	8746	8759	8797	
Q	45°C	10143	12910	15878	19009	22268	25618	29023	32447	35853	39205	42468	45604		
		P		7098	7363	7561	7701	7794	7850	7880	7895	7905	7921	7953	8011
Q	40°C	10224	13043	16057	19231	22529	25914	29349	32800	36229	39601	42878	46025		
		P		6351	6624	6832	6983	7088	7159	7206	7238	7268	7304	7358	7439
Q	35°C	10241	13190	16330	19627	23043	26542	30089	33646	37177	40647	44019	47257		
		P		5735	6021	6241	6408	6530	6619	6686	6740	6792	6852	6932	7042
Q	30°C	10404	13562	16909	20408	24022	27715	31451	35195	38908	42556	46103			
		P		5209	5510	5748	5934	6077	6188	6278	6357	6436	6525	6635	
Q	25°C	10923	14372	18004	21784	25676	29643	33649	37658	41634	45539				
		P		4730	5051	5311	5519	5686	5824	5941	6049	6159	6280		
Q	20°C	12012	15829	19827	23968	28217	32538	36893	41247	45564					
		P		4257	4602	4886	5121	5317	5484	5633	5774	5918			
Q	15°C	13879	18146	22588	27170	31856	36610	41394	46173						
		P		3748	4120	4434	4699	4927	5127	5311	5489				
Q	10°C	16738	21532	26499	31602	36805	42070	47363							
		P		3161	3564	3910	4210	4474	4712	4935					
WW200HP-TFD-GV1															
Q	65°C											50085			
												16171			
Q	60°C			13160	17307	21675	26217	30889	35645	40439	45227	49962	54598	59092	
		P		13566	13806	13967	14064	14109	14116	14098	14067	14038	14023	14035	
Q	55°C			14862	18768	22889	27181	31597	36091	40620	45136	49595	53951	58159	
		P		11814	12051	12213	12311	12360	12373	12362	12341	12323	12322	12349	
Q	50°C	12277	15787	19551	23527	27667	31927	36261	40623	44969	49251	53426	57448		
		P		10062	10389	10629	10796	10901	10958	10981	10983	10976	10975	10991	11039
Q	45°C	12727	16200	19923	23853	27942	32145	36418	40714	44988	49195	53289	57224		
		P		8907	9240	9487	9663	9779	9850	9888	9907	9920	9939	9979	10052
Q	40°C	12829	16366	20148	24131	28269	32516	36828	41158	45461	49691	53803	57753		
		P		7969	8312	8572	8762	8895	8984	9042	9083	9119	9165	9232	9335
Q	35°C	12850	16550	20491	24628	28914	33305	37755	42219	46650	51004	55235	59298		
		P		7196	7555	7832	8040	8194	8306	8389	8457	8522	8599	8699	8836
Q	30°C	13054	17018	21218	25608	30142	34777	39465	44162	48822	53400	57850			
		P		6536	6914	7213	7446	7625	7765	7878	7977	8076	8188	8326	
Q	25°C	13707	18034	22592	27335	32218	37196	42223	47253	52242	57143				
		P		5935	6338	6664	6925	7135	7307	7455	7591	7728	7880		
Q	20°C	15072	19862	24879	30075	35407	40828	46293	51757	57174					
		P		5342	5774	6131	6426	6672	6881	7068	7245	7426			
Q	15°C	17416	22769	28344	34094	39973	45938	51941	57938						
		P		4703	5170	5563	5896	6182	6434	6665	6888				
Q	10°C	21002	27019	33251	39654	46182	52790	59431							
		P		3966	4472	4907	5283	5614	5912	6192					

注: 冷凝器出口过冷度8.3K, 过热度11.1K

Note: Condenser Outlet Subcooling8.3K, Subheating 11.1K

WW

R410A

带喷气增焓 EVI

R410A

WW

带喷气增焓 EVI

制热量

Heating Capacity

制热量 HEATING CAPACITY

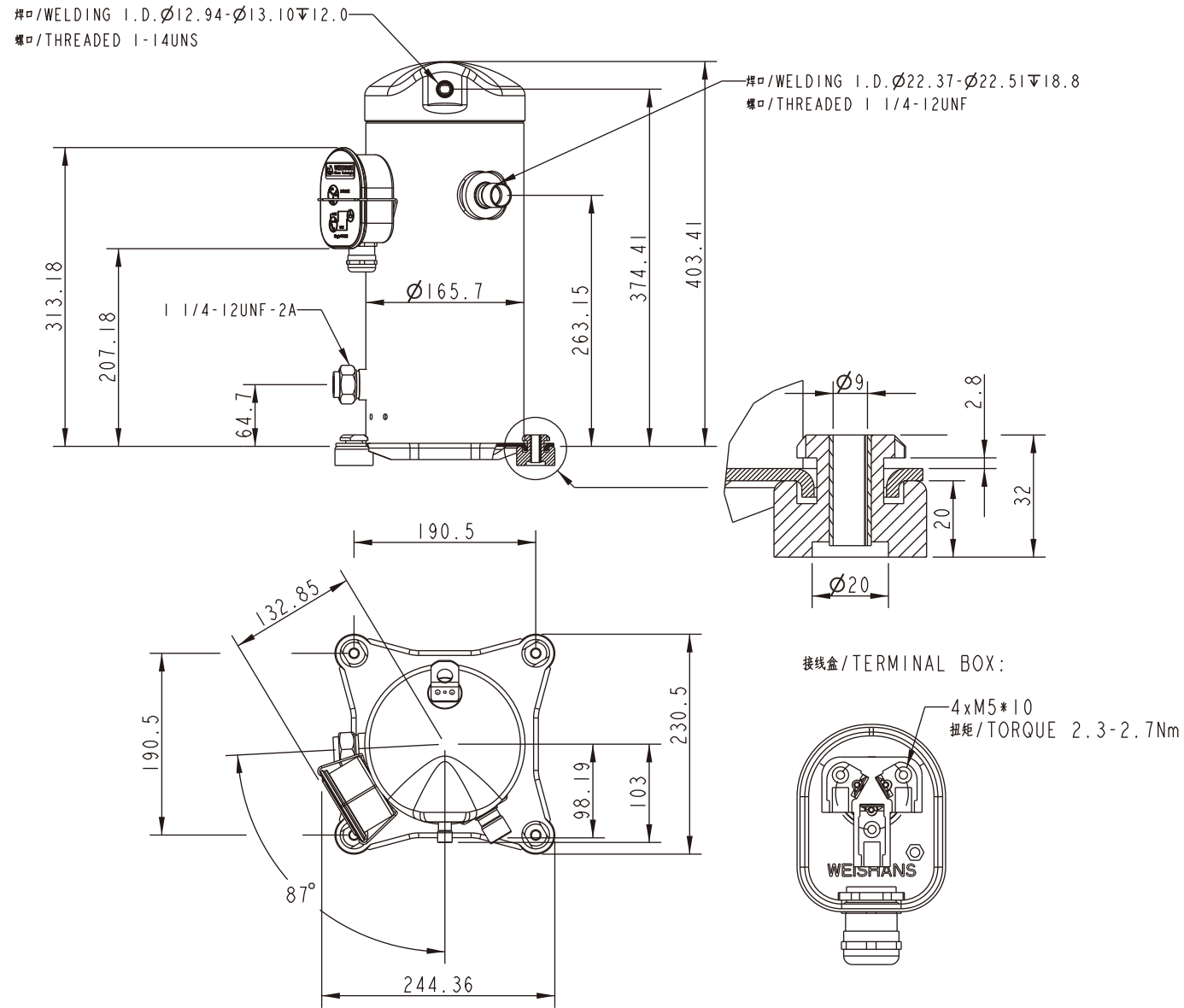
型号Model		项目Item (W)	Tc Te	-35°C	-30°C	-25°C	-20°C	-15°C	-10°C	-5°C	0°C	5°C	10°C	15°C	20°C
				WW220HP-TFD-GV1											
Q	65°C											45202			
												14594			
Q	60°C			11877	15620	19561	23661	27877	32169	36496	40817	45090	49275	53330	
		P		12243	12459	12605	12693	12734	12740	12723	12696	12669	12655	12666	
Q	55°C			13413	16938	20657	24530	28516	32572	36659	40735	44760	48691	52488	
		P		10662	10876	11022	11111	11155	11167	11157	11138	11122	11120	11145	
Q	50°C	11080	14247	17645	21233	24970	28814	32725	36662	40584	44449	48217	51847		
		P		9081	9376	9593	9743	9838	9890	9910	9912	9906	9905	9919	9963
Q	45°C	11486	14620	17981	21527	25217	29011	32867	36744	40602	44398	48093	51645		
		P		8038	8339	8562	8721	8826	8890	8924	8941	8953	8970	9006	9072
Q	40°C	11579	14770	18184	21778	25513	29346	33237	37145	41028	44846	48558	52122		
		P		7192	7502	7736	7908	8027	8108	8160	8197	8230	8271	8332	8425
Q	35°C	11597	14937	18494	22227	26095	30058	34074	38102	42102	46031	49850	53516		
		P		6495	6818	7068	7256	7395	7496	7571	7632	7691	7760	7851	7975
Q	30°C	11782	15359	19149	23111	27204	31386	35617	39856	44062	48193	52209			
		P		5899	6240	6510	6720	6882	7008	7110	7199	7289	7390	7514	
Q	25°C	12370	16275	20389	24670	29077	33570	38106	42646	47148	51571				
		P		5357	5720	6014	6250	6440	6595	6728	6851	6975	7112		
Q	20°C	13603	17926	22453	27143	31955	36847	41780	46711	51599					
		P		4821	5211	5534	5800	6021	6210	6379	6539	6702			
Q	15°C	15718	20549	25580	30769	36076	41459	46877	52289						
		P		4244	4666	5021	5321	5579	5806	6015</					

外形尺寸

Dimensional information

WW28~WW48 / WW28KP~WW61KP

不带喷气增焓W/O EVI



接线盒 / TERMINAL BOX:
4xM5*10
扭矩 / TORQUE 2.3-2.7Nm

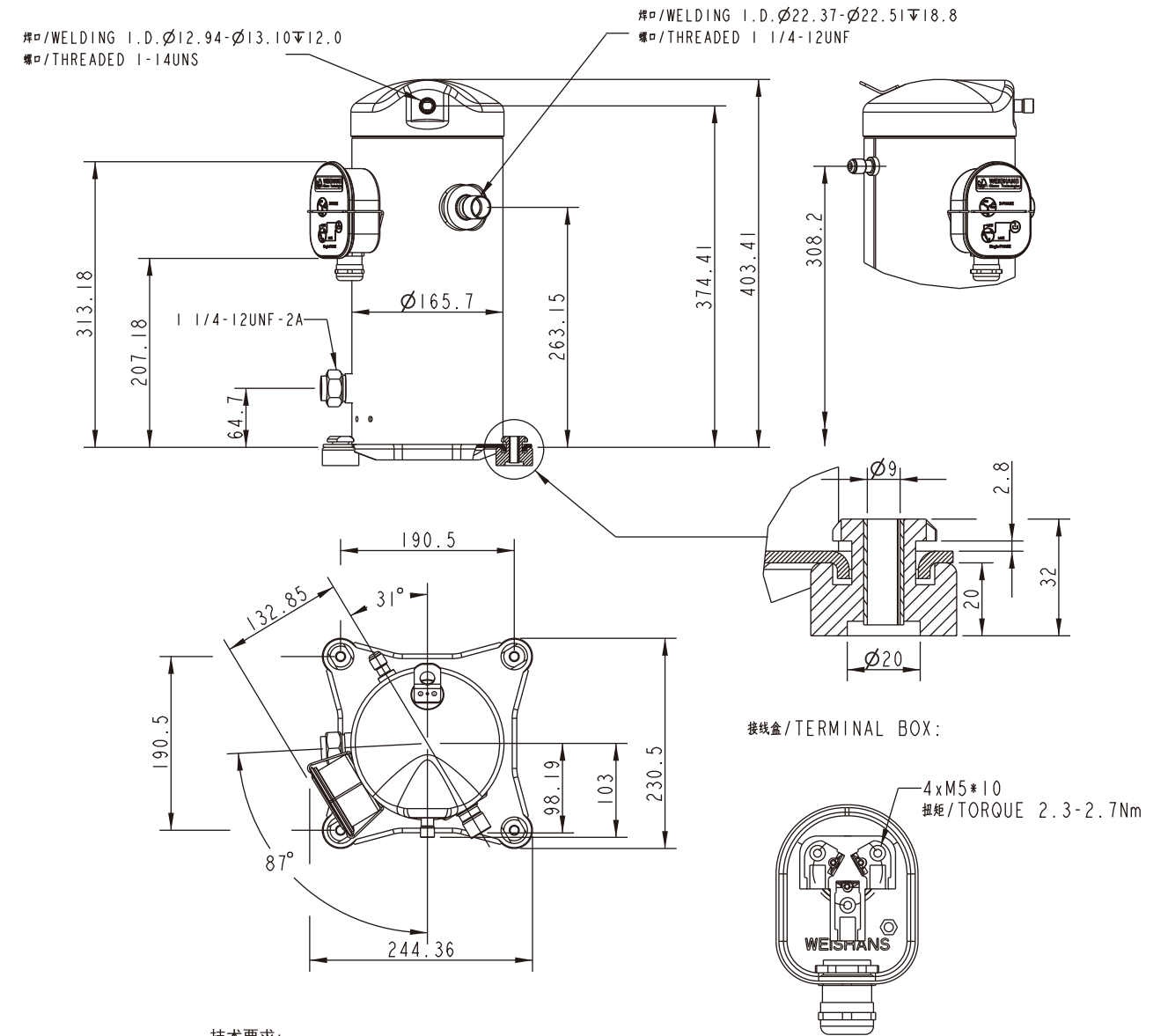
- 技术要求:
Technical requirements:
1. 未注尺寸单位: mm
 2. 未注尺寸公差: ± 3 mm
 3. 未注角度公差: $\pm 3^\circ$

外形尺寸

Dimensional information

WW28~WW48 / WW50HP~WW126HP

带喷气增焓机型EVI



接线盒 / TERMINAL BOX:
4xM5*10
扭矩 / TORQUE 2.3-2.7Nm

- 技术要求:
Technical requirements:
1. 未注尺寸单位: mm
 2. 未注尺寸公差: ± 3 mm
 3. 未注角度公差: $\pm 3^\circ$

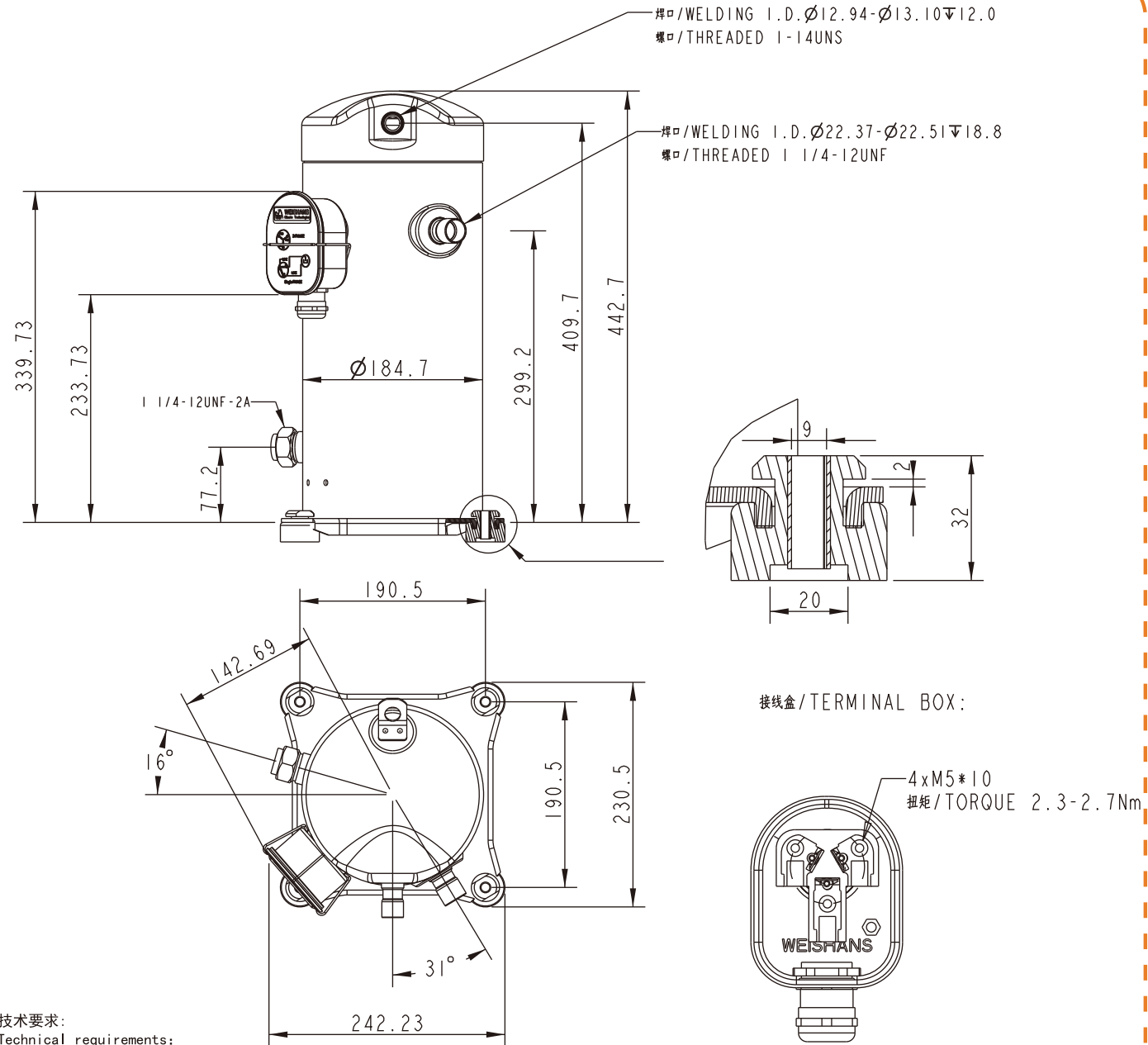
外形尺寸

Dimensional information

WW61~WW79 / WW72KP~WW108KP

不带喷气增焓W/O EVI

外形尺寸 DIMENSIONAL INFORMATION



- 技术要求:
Technical requirements:
1. 未注尺寸单位Unsize unit:mm
 2. 未注尺寸公差Unimensioned tolerance:±3mm
 3. 未注角度公差Angle tolerance without injection:±3°

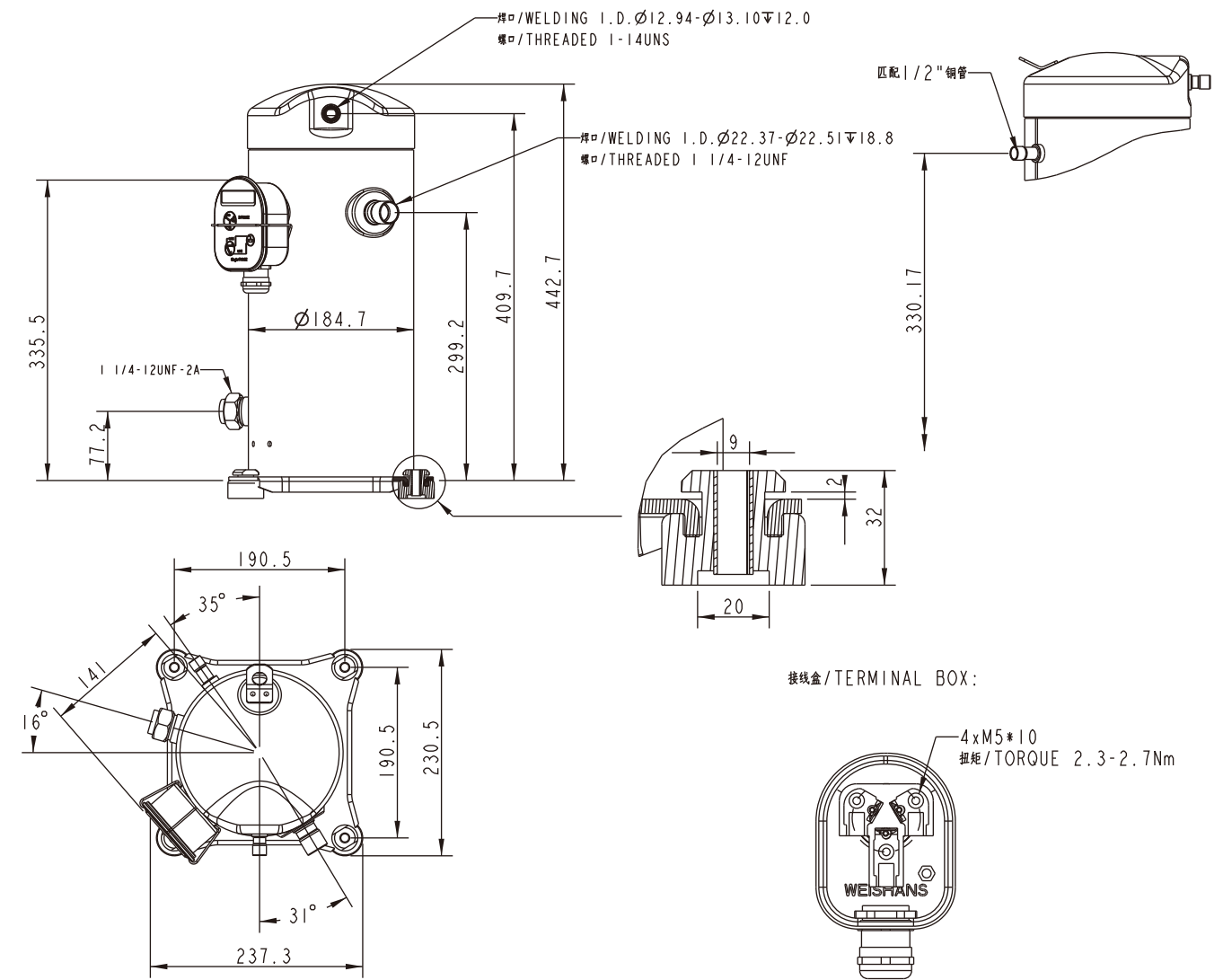
外形尺寸

Dimensional information

WW61~WW79 / WW130HP~WW200HP

带喷气增焓机型EVI

外形尺寸 DIMENSIONAL INFORMATION



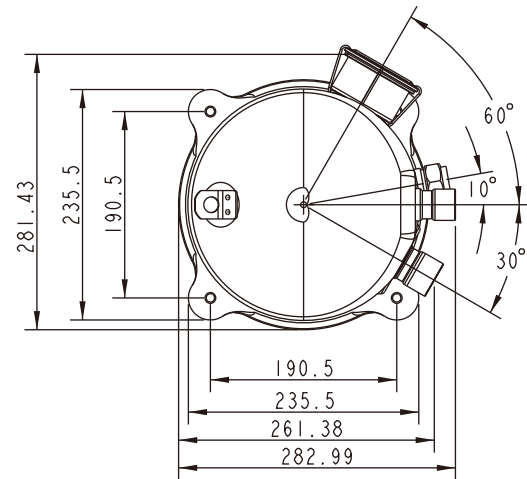
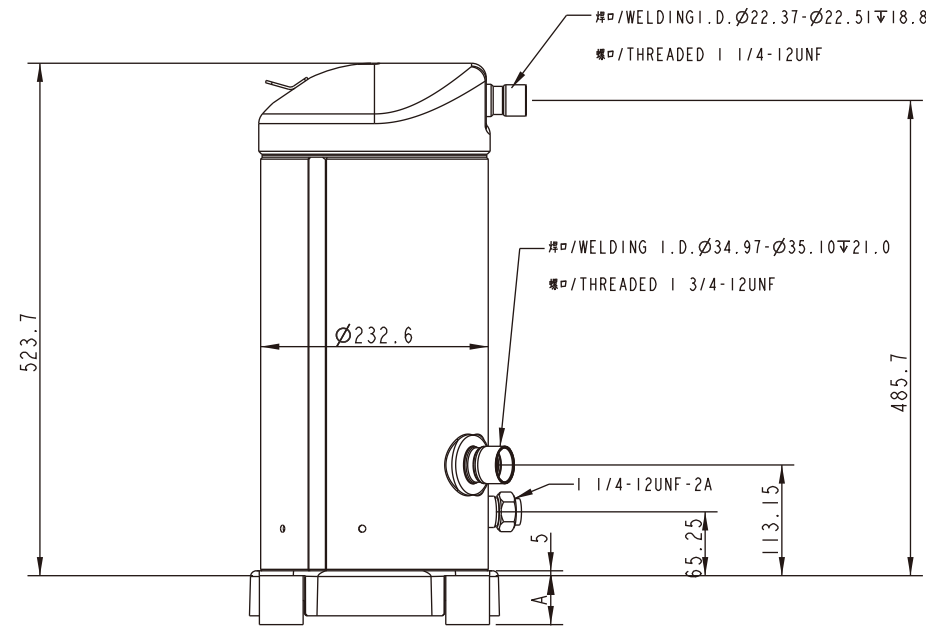
- 技术要求:
Technical requirements:
1. 未注尺寸单位Unsize unit:mm
 2. 未注尺寸公差Unimensioned tolerance:±3mm
 3. 未注角度公差Angle tolerance without injection:±3°

外形尺寸

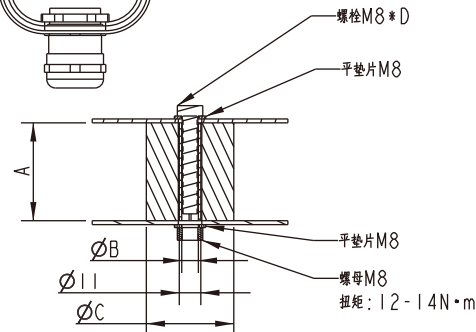
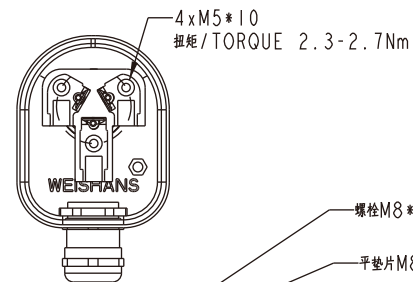
Dimensional information

WW94~WW190 / WW125KP~WW190KP

不带喷气增焓W/O EVI



接线盒/Terminal BOX:



- 技术要求:
Technical requirements:
1. 未注尺寸单位Unsize unit:mm
 2. 未注尺寸公差Unimensioned tolerance:±3mm
 3. 未注角度公差Angle tolerance without injection:±3°

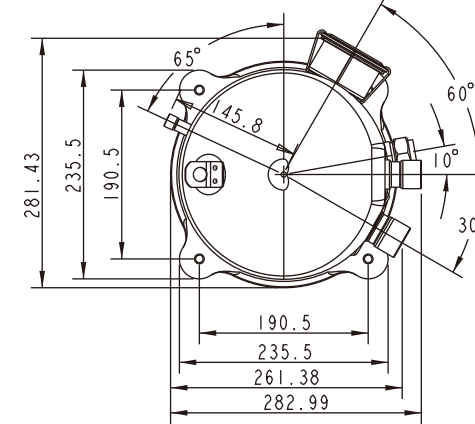
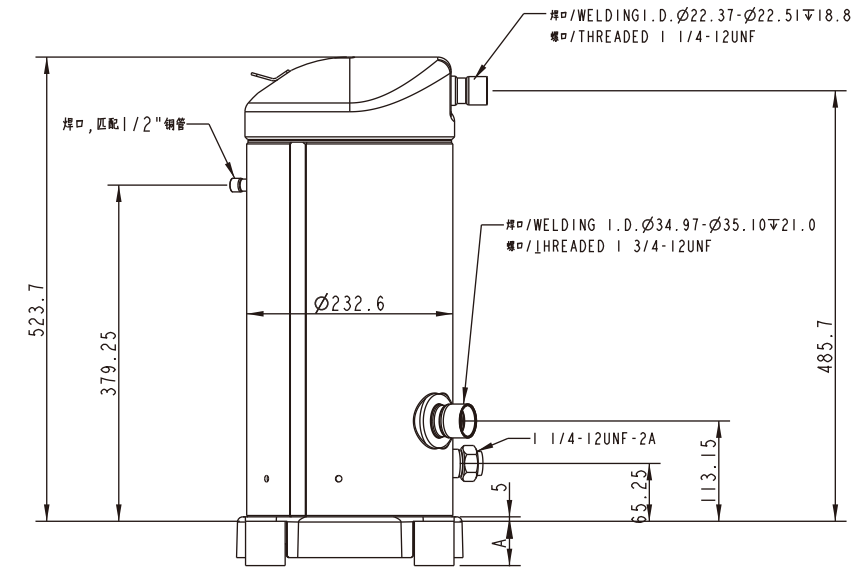
型号 Model	尺寸 Dimension	A	B	C	D
WW94KM-WW125KM WW94KE-WW125KE WW125KP-WW170KP		30	9	50	50
WW144KM-WW170KM WW144KE-WW170KE		50	8.5	45	70

外形尺寸

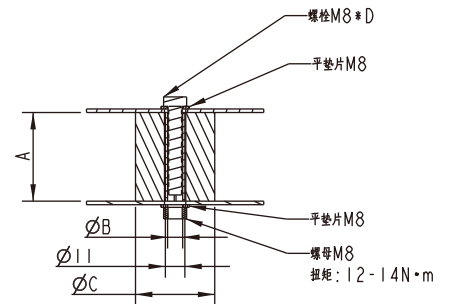
Dimensional information

WW94~WW190 / WW220HP~WW336HP

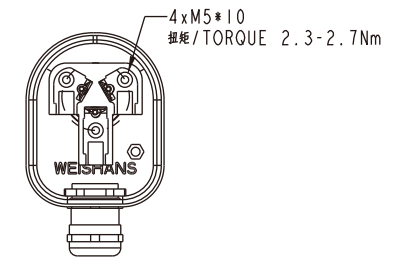
带喷气增焓机型EVI



脚垫安装建议:



接线盒/Terminal BOX:



- 技术要求:
Technical requirements:
1. 未注尺寸单位Unsize unit:mm
 2. 未注尺寸公差Unimensioned tolerance:±3mm
 3. 未注角度公差Angle tolerance without injection:±3°

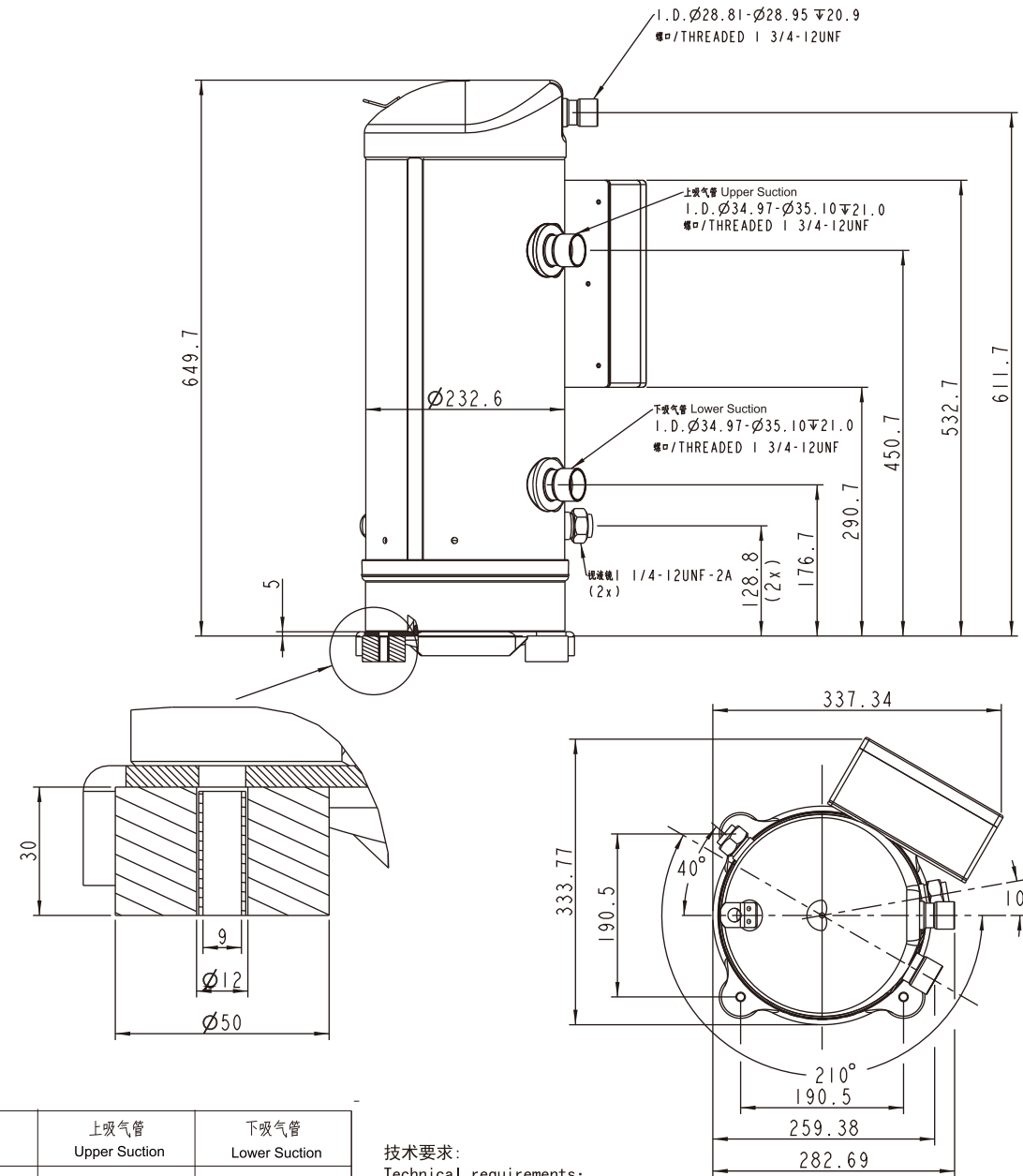
型号 Model	尺寸 Dimension	A	B	C	D
WW94KM-WW125KM WW94KE-WW125KE WW258HP-WW336HP		30	9	50	50
WW144KM-WW170KM WW144KE-WW170KE		50	8.5	45	70

外形尺寸

Dimensional information

WW250~WW300 / WW235KP~WW292KP

不带喷气增焓W/O EVI



型号 Model	上吸气管 Upper Suction	下吸气管 Lower Suction
WW250KM-WW300KM WW250KE-WW300KE WW235KP-WW292KP	有 With	无 Without

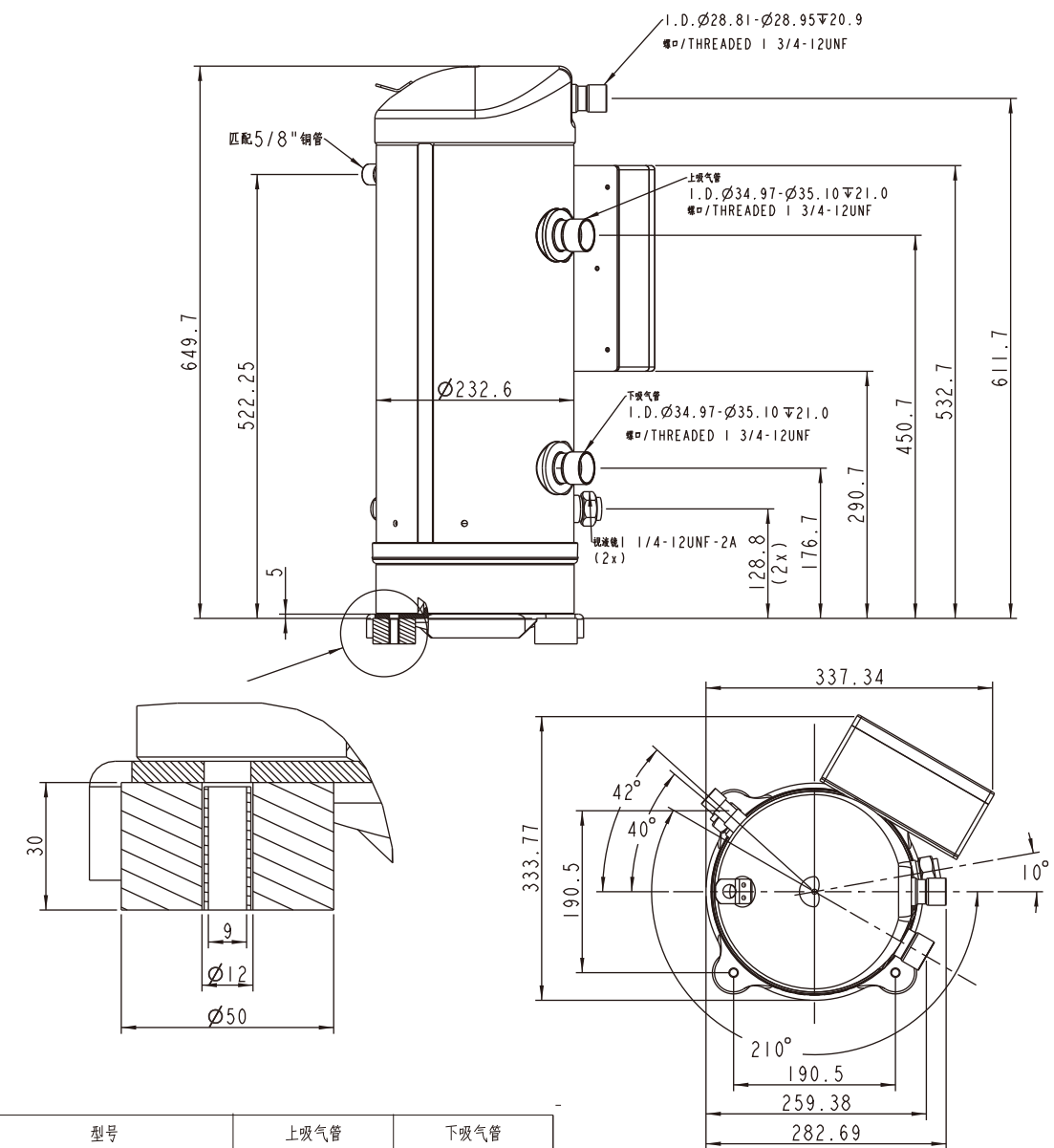
技术要求:
Technical requirements:
1. 未注尺寸单位Unsize unit:mm
2. 未注尺寸公差Unimensioned tolerance:±3mm
3. 未注角度公差Angle tolerance without injection:±3°

外形尺寸

Dimensional information

WW250~WW300 / WW430HP-WW520HP

带喷气增焓机型EVI



型号 Model	上吸气管 Upper Suction	下吸气管 Lower Suction
WW250KM-WW300KM WW250KE-WW300KE WW430HP-WW520HP	有 With	无 Without

技术要求:
Technical requirements:
1. 未注尺寸单位Unsize unit:mm
2. 未注尺寸公差Unimensioned tolerance:±3mm
3. 未注角度公差Angle tolerance without injection:±3°

外形尺寸 DIMENSIONAL INFORMATION

外形尺寸 DIMENSIONAL INFORMATION

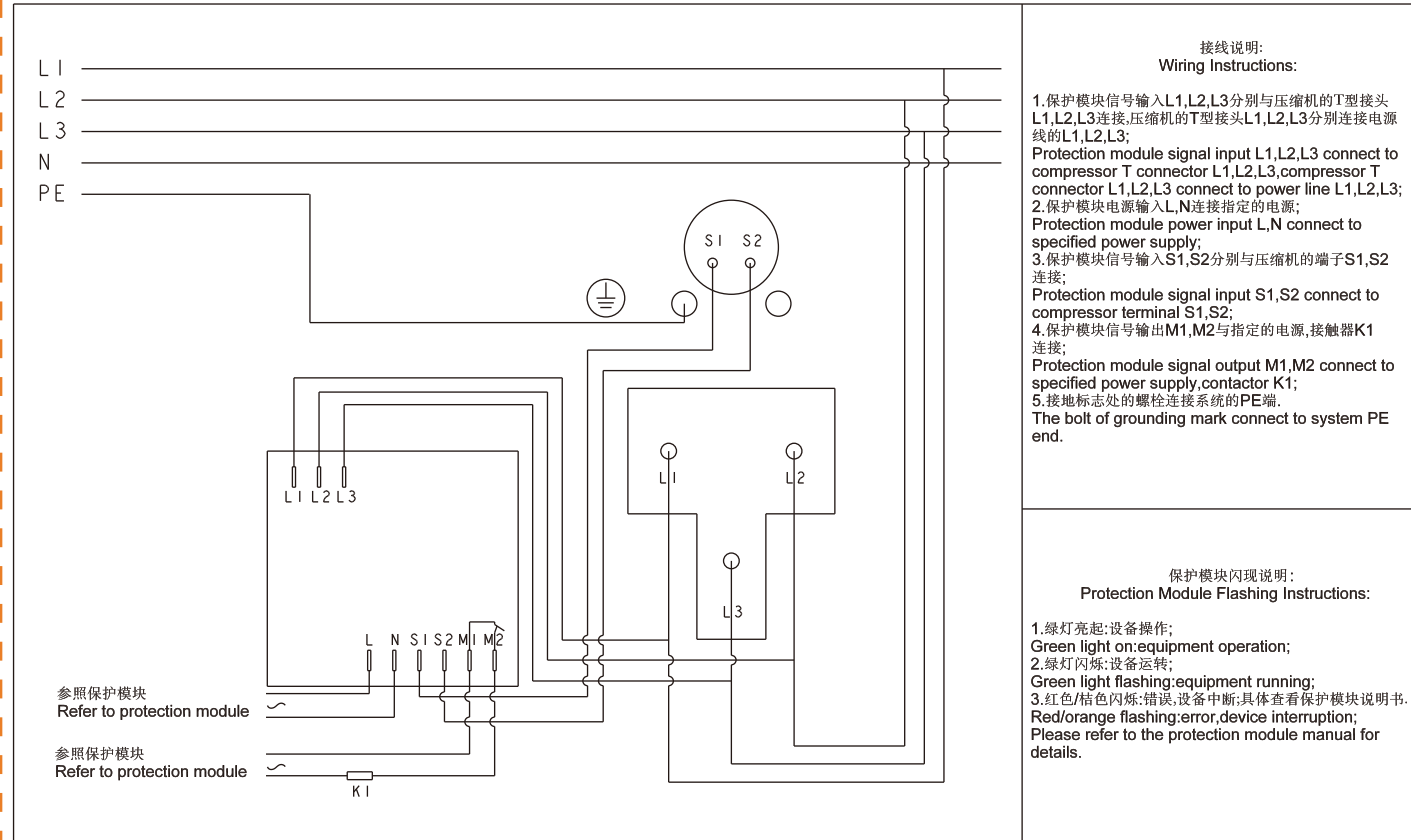
接线图

Wiring Diagram

WW250~WW300 / WW235KP-WW292KP / WW430HP~WW520HP

带/不带喷气增焓机型 EVI / W/O EVI

接线图 WIRING DIAGRAM



接线说明:
Wiring Instructions:

1. 保护模块信号输入L1,L2,L3分别与压缩机的T型接头L1,L2,L3连接,压缩机的T型接头L1,L2,L3分别连接电源线的L1,L2,L3;
Protection module signal input L1,L2,L3 connect to compressor T connector L1,L2,L3,compressor T connector L1,L2,L3 connect to power line L1,L2,L3;
2. 保护模块电源输入L,N连接指定的电源;
Protection module power input L,N connect to specified power supply;
3. 保护模块信号输入S1,S2分别与压缩机的端子S1,S2连接;
Protection module signal input S1,S2 connect to compressor terminal S1,S2;
4. 保护模块信号输出M1,M2与指定的电源,接触器K1连接;
Protection module signal output M1,M2 connect to specified power supply,contactor K1;
5. 接地标志处的螺栓连接系统的PE端。
The bolt of grounding mark connect to system PE end.

保护模块闪现说明:
Protection Module Flashing Instructions:

1. 绿灯亮起:设备操作;
Green light on:equipment operation;
2. 绿灯闪烁:设备运转;
Green light flashing:equipment running;
3. 红色/桔色闪烁:错误,设备中断;具体查看保护模块说明书。
Red/orange flashing:error,device interruption;
Please refer to the protection module manual for details.