



联系我们 / Contact Us

公司名称：苏州为山之环境技术有限公司

Suzhou Weishans Climate Technologies Co.,Ltd

公司官网 / Web: www.weishans.com

地址：江苏省苏州市相城区黄埭镇咏春科技园

Address: Yongchun Science and Technology Park, Huangdai Town, Xiangcheng District, Suzhou City, Jiangsu Province

联系人Contact：王先生Mr.Wang:13771888067, 李先生Mr.Li:15995875226, 陈女士Ms.Chen:13640429967, 王先生Mr.Wang:18896534978



免责声明

技术数据在印刷前已经校对过，印刷之后有再更新的可能。如有对某一参数确认的需求，请联系苏州为山之环境技术有限公司。为山之对参数中可能存在的差错概不承担任何责任，为山之保留自行改变其产品而不预先通知的权利。

Disclaimer

Our technical data have been checked before printing, but it is possible for data to be updated after printing. If you need to confirm a certain parameter, please contact Suzhou Weishans Climate Technology Co., Ltd. Weishans will not take any responsibilities for any possible errors in the parameters and reserve the right to change its products without prior notice.

Rev:202502



高能效涡旋压缩机

High Energy Efficiency Scroll Compressor



热泵烘干应用产品手册

Product Manual For Heat Pump & Stoving Application

低GWP版 Low Global Warming Potential version

苏州为山之环境技术有限公司
Suzhou Weishans Climate Technologies Co.,Ltd

为山者

积土成山，事当有为不为

为山者，当以九仞为目标，坚韧前行

居谷不弃，据高无傲，以余力尽余志

为山者，当持仁心，聚仁人志士以作为

仁德宽厚，虚怀若谷，度己度人，度可度之人

为山者智而不乱智，谋而不全谋

为山者实为治军，将即将，身先士卒，令必行，士必勤勇，功当巨赏

为山者胜于人，乃心胜于人，非物胜于人也

为山者，虽积跬步箕土，乃成伟山

WEISHANS

To build mountain with small amounts of earth, You would select what to do and what not to do.

To be WEISHANS, You should have a high goal, go forward no matter what difficulty to meet, No give up when you low,

No pride when you high, Do what you can do for the capable goal.

To be WEISHANS, You should have a heart like god, Collect kind and upright men to do something right, kind god feeling to others , mind breadth, sublime oneself and others ,and sublime the men who will sublime.

To be WEISHANS, should be smart but only smart on the right direction, and have astuteness on the right place.

To be WEISHANS, Just like build an army, General should be exactly like a leader with active and positive Behavior, order must have good result and active feedback, soldiers must be active to order and work hard, great reward for great job.

To be WEISHANS, They defeat others, They are so strong in mind not on the treasure.

To be WEISHANS, Even with small steps to reach peak , Even collect small earth to build great mountain.

目录Catalog

公司简介 01
About us

产品特点 04
About Product

关键技术及创新 05
Characters and Advantages

命名规则 07
Nomenclature

应用范围 08
Application Range

技术参数 09
Specification

制热量 13
Heating Capacity

外形尺寸 23
Dimensional Information

苏州为山之环境技术有限公司

苏州为山之环境技术有限公司成立于2018年6月，坐落于工业发达的历史名城苏州，专注于开发节能环保型压缩机，是一家创新型科技企业。为山之研发的涡旋式热泵压缩机核心技术已取得重大突破，并成功应用于多个领域，包括但不限于工业制冷、商用热水、工业蒸汽、农业烘干、制冷工程、精密空调、轨道交通制冷、转轮除湿及工业余热回收等。

公司研发的系列热泵蒸汽涡旋压缩机以及国内率先推出的防爆系列涡旋压缩机，显著拓展了涡旋压缩机的应用范围。公司自主研发的强力增焓技术也进一步扩大了压缩机的运行范围，使得在常温条件下使用同一工质实现高效蒸汽成为现实。

公司拥有先进的自动化生产线和高精度检测与加工设备，创新工艺流程，具备年产10万台涡旋压缩机的组装生产能力，产品覆盖从2匹至25匹。公司产品通过了CCC、CE、CB、ROHS & REACH和ISO 9001等多项国际认证。

公司高度重视知识产权保护，至今已申请41项知识产权，其中包括13项发明专利（5项已获授权）、27项实用新型专利（21项已获授权）和1项软件著作权。公司荣获江苏省民营科技企业和国家级高新技术企业称号。

公司注重质量管理体系和信息化建设，秉持以人为本的理念，组建了一支具有竞争力的人才队伍，激发员工的积极性和创造力，不断提高运营效率。公司秉承创新、诚信的理念，致力于为客户创造更多价值，携手实现共赢。

展望未来，公司将继续加大研发投入，致力于为客户提供绿色环保的热泵及冷冻压缩机解决方案，以减少全球碳排放为使命，为构建绿色地球家园贡献力量。

www.weishans.com

Suzhou Weishans Climate Technologies Co., Ltd

Suzhou Weishans Climate Technology Co., Ltd was established in June 2018, it is located in Suzhou with developed industry and long history city, and focuses on the development of energy-saving and environment protection compressors. It is an innovative technology enterprise. The core technology of the scroll heat pump compressors developed by Weishans has made significant breakthroughs and has been successfully applied in multiple fields, including but not limited to industrial refrigeration, commercial hot water, industrial steam, agricultural drying, refrigeration engineering, precision air conditioning, rail transit refrigeration, rotary wheel dehumidification and industrial waste heat recovery, etc. The series of heat pump steam scroll compressors developed by the company and the explosion-proof series of scroll compressors first launched in China have significantly expanded the application range of scroll compressors. The company's independently developed strong enthalpy increase technology has also further expanded the operating range of the compressor, making it possible to achieve efficient steam using the same working fluid under normal temperature conditions.

The company owns advanced automated production lines and high-precision testing and machining equipments, innovated technological process, and has an annual assembly production capacity of 100,000 scroll compressors, with products covering the range from 2HP to 25HP. The company's products have passed multiple international certifications including CCC, CE, CB, ROHS & REACH and ISO 9001.

The company attaches great importance to the protection of intellectual property rights and has applied for 41 intellectual property rights so far, including 13 invention patents (5 have been authorized), 27 utility model patents (21 have been authorized) and 1 software copyright. The company has been awarded the titles of Jiangsu Private Technology Enterprise and National High-tech Enterprise.

The company attaches great importance to the quality management system and information construction, adheres to the people-oriented concept, and has formed a competitive talent team to stimulate the enthusiasm and creativity of employees and continuously improve operational efficiency. The company adheres to the concepts of innovation and integrity, and is committed to creating more value for customers and achieving win-win results together.

Looking forward to the future, the company will continue to increase investment in research and development, and is committed to providing customers with green and environmentally heat pump and refrigeration compressor solutions. With the mission of reducing global carbon emissions, it will contribute to building a green Earth home.



OUR VISION

企业愿景

为山之遵循“求精不求巧，求本不求华”的产品理念，把“为山”打造成国内外知名品牌。

WE AIM TO MAKE "WEISHAN" THE FIRST-CLASS INTERNATIONAL BRAND. WE ALWAYS FOLLOW THE THINKING "TO ACHIEVE PERFECTION WITHOUT INGENUITY, SEEKING FOR ORIGIN WITHOUT REFINEMENT."

OUR MISSION

企业使命

以“九仞”为目标，坚韧前行；居谷不弃，据高无傲！

"JIUREN" IS OUR AIM. WE WILL MOVE FORWARD TOUGHLY. WE WILL NEVER GIVE UP EVEN IN DOWNS AND NEVER BE ARROGANT WHEN IN UPS.

SERVICE AIM

服务宗旨

顾客第一、品质第一、服务第一、持续改进、回报社会

CUSTOMERS FIRST, QUALITY FIRST, SERVICE FIRST, KEEPING IMPROVING, REPAYING SOCIETY

Build a Nine-ten Mountain
Forge Ahead

为山九仞 砥砺前行



ABOUT PRODUCT 产品特点

“为山”牌涡旋压缩机性能优良，突出的特点有：

1. 国产替代：拥有自主知识产权，且与国外知名企业的同等技术水平的产品具有良好的互换性。
2. 重点开发的中高功率范围12匹及以上的全封闭压缩机新产品，获得良好的市场应用口碑。
3. 针对不同的冷媒设计多种涡旋盘，适用范围广，WW系列压缩机在烘干机组上冷凝温度最高可达85摄氏度。
4. 能效比高，入围北极熊创新产品奖前三甲，是节能机组产品。

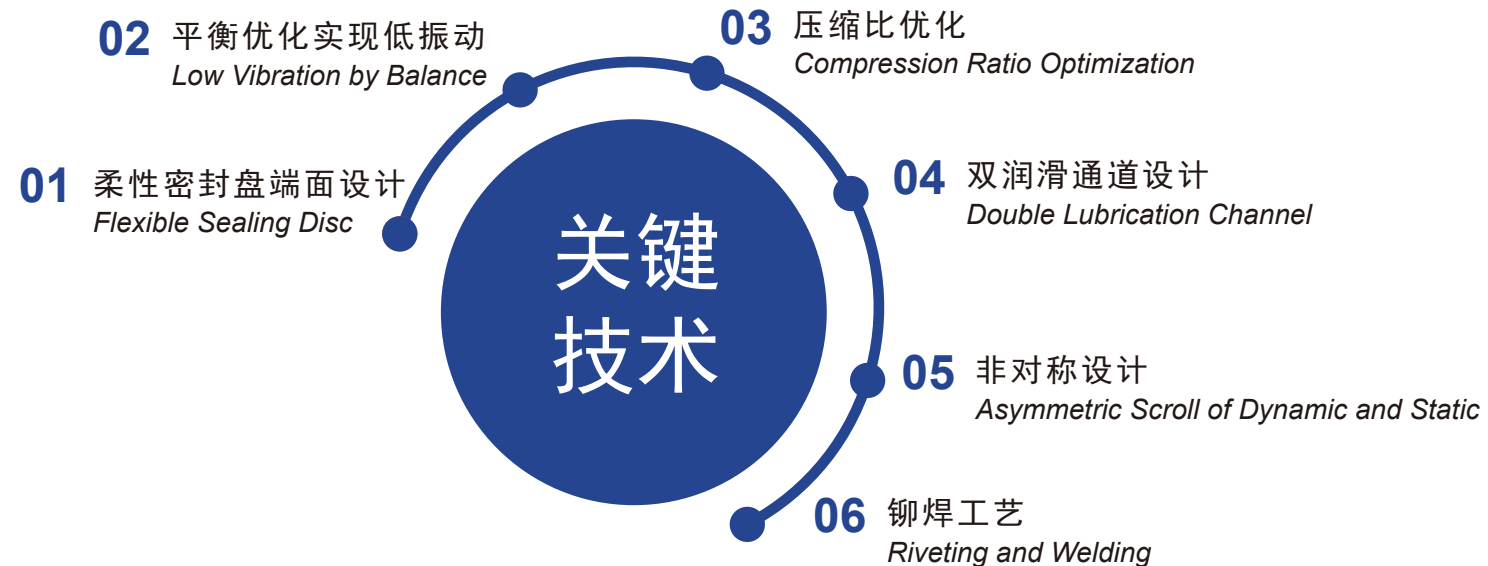
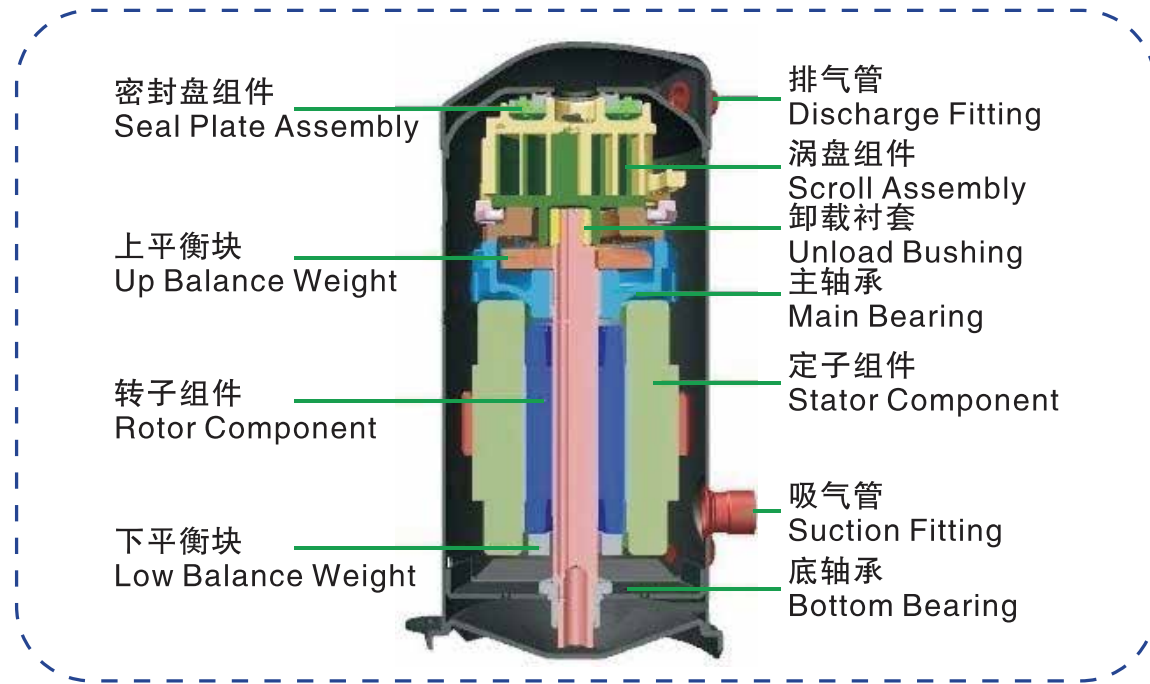
"Weishan" brand scroll compressors have excellent performance, and the outstanding features are as below:

1. *Localization substitution: independent intellectual property rights; good interchangeability with products of the same technical level as well-known foreign companies.*
2. *Stress-developed ≥ 12 HP hermetic compressors in the medium and high power range and get good market application reputation.*
3. *The products are designed with multiple scrolls for different refrigerants and have a wide application range. The condensing temperature of WW series can reach 85°C on the drying unit.*
4. *The products have high energy efficiency ratio are selected in the top three of the Polar Bear Innovative Product Award and are the energy-saving units.*

关键技术及创新

Characters and Advantages

关键技术及创新 CHARACTERS AND ADVANTAGES



关键技术及创新

Characters and Advantages

关键技术及创新 CHARACTERS AND ADVANTAGES

为山之的涡旋压缩机为热泵，空调，冷水机及冷冻冷藏等应用提供了出众的解决方案，涡旋压缩机是高可靠性，高能效比，紧凑性系统设计的理想选择。为山系列涡旋压缩机可提供2~25HP的产品，其适用的制冷剂包括R410A, R22, R407C, R134a等

Weishans' scroll compression technology provide an outstanding solution for Heat pump, air conditioner, chiller and refrigeration applicaiton. Scroll compressors are an ideal choice with high reliability, high EER and compact system design. The scroll compressors of Weishan

series can provide 2HP~25HP products, the applicable refrigerants include R410A, R22,R407C, R134a ETC.

制热量数据 Capacity Data

本样本所列压缩机制冷量数据, 电源频率50Hz (电机同步转速2900rpm)。当压缩机在60Hz频率 (电机转速3500rpm) 运行时, 制冷量以及输入功率相应约增加20%。压缩机不宜在应用范围外使用。

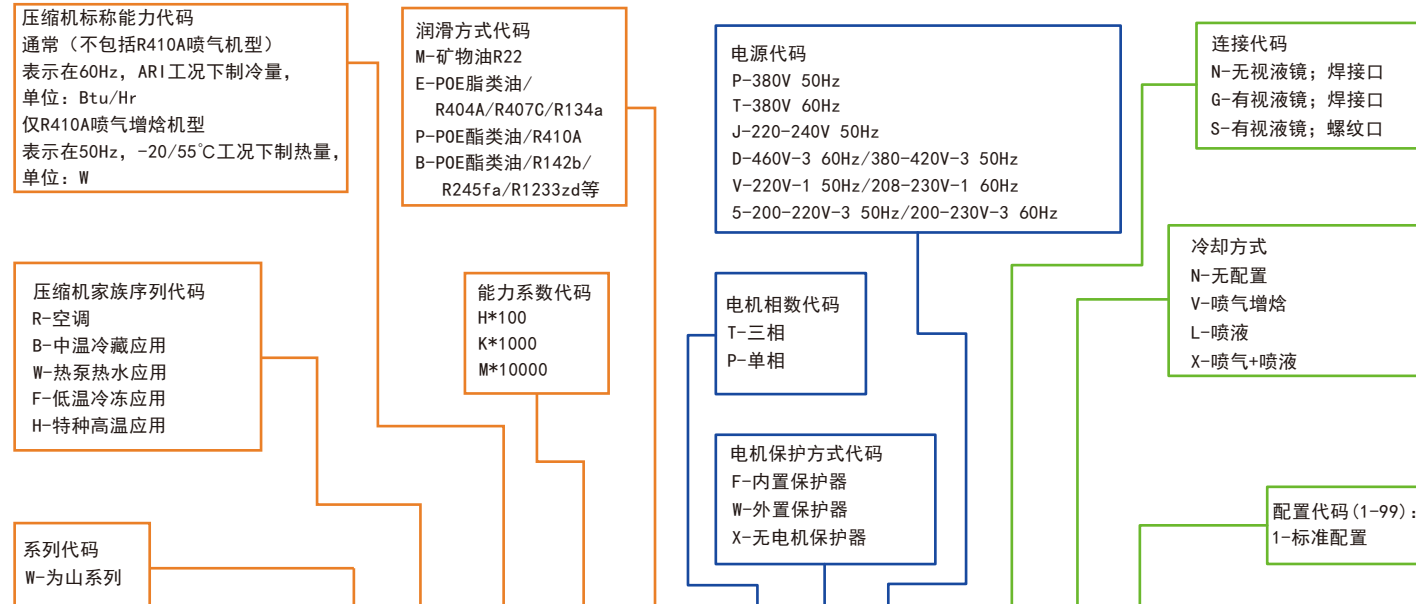
The capacity data of scroll compressors listed in this catalogue, power frequency is 50 Hz (Synchronous speed of motor 2900 rpm). When the compressors are operated with 60Hz (the speed of motor 3500 rpm), the capacity and input power are correspondingly increased about 20%. The compressors should not be used beyond the application range.

Cooling capacity data of compressor listed in this sample, power frequency: 50Hz(synchronous motor speed: 2900rpm)

命名规则

Nomenclature

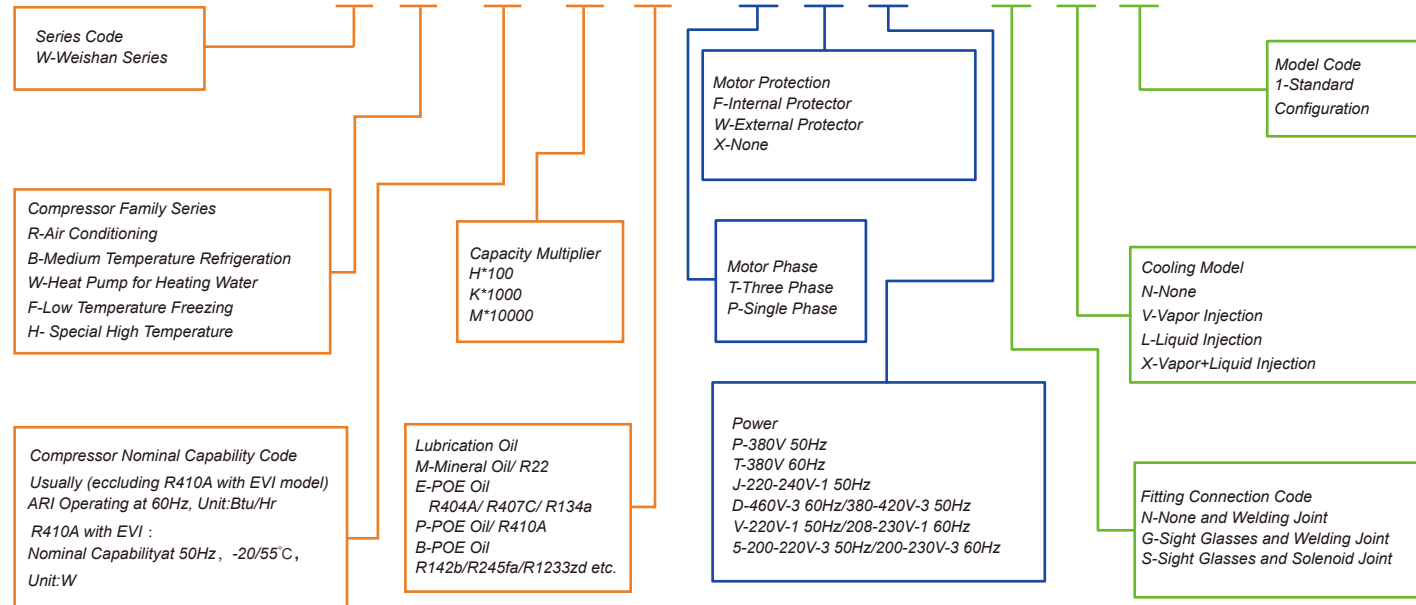
命名规则 NOMENCLATURE



WW 160 K B - T F D - G N 1

R410A喷气增焓机型 R410A with EVI:

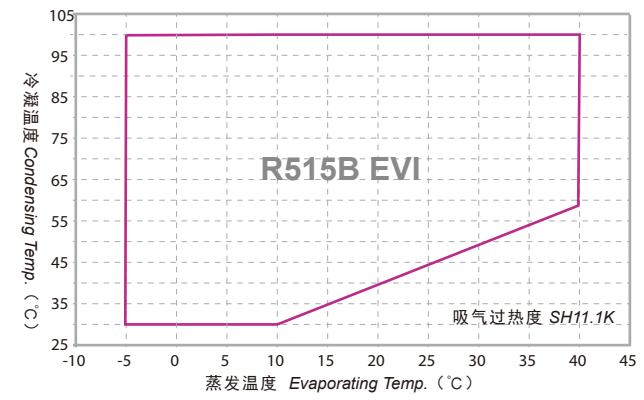
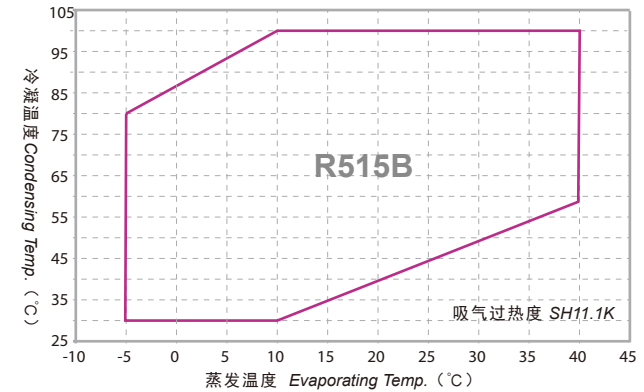
WW 286 H P - T F D - G V 1



应用范围

Application Range

应用范围 APPLICATION RANGE



技术参数 Specifications

WW R515B 不带喷气增焓 W/O EVI

技术参数 SPECIFICATIONS

型号 Model	WW70KB-TFD-GN1	WW120KB-TFD-GN1	WW160KB-TFD-GN1	WW190KB-TFD-GN1	WW240KB-TFD-GN1
电制 Motor Power	380-420V/3~/50Hz or 460V/3~/60Hz				
名义功率 Nominal Power (HP)	3	5	7	8	10
排量 Displacement (cc/Rev)	50.6	84.5	108	127	166.1
制冷剂 Refrigerant	R515B				
名义制热量 Nominal Capacity (W)	5626	9395	12008	14121	18469
名义输入功率 Nominal Power (W)	1362	2274	2906	3418	4470
名义工况能效比 COP (W/W)	4.13	4.13	4.13	4.13	4.13
名义工况电流 Nominal Operating Current (A)	2.4	4.1	5.2	6.1	8.0
堵转电流 LRA (A)	45	85	85	120	120
最大运行电流 MOC (A)	5.3	8.8	12	13.3	17.4
曲轴箱加热器功率 Crankcase Heater (W)	70		90		
接管尺寸 Fitting ID Size (mm)	排气管 Dis. Tube	12.94-13.10		22.37-22.51	
	吸气管 Suc. Tube	22.37-22.51		34.97-35.10	
外形尺寸 Dimension (mm)	长(L)	244.4	233.63	281.4	
	宽(W)	230.5	230.5	273.7	
	高(H)	403.4	442.7	523.7	
底脚安装尺寸(孔径) Mounting Dim.(Dia.) (mm)	190.5x190.5(9.0)			190.5x190.5(8.5)	
润滑油类型 Lubrication Oil	POE				
润滑油初次充注量 Lubrication Oil Initial Charge (L)	1.4	1.8	1.8	3	3
润滑油重新充注量 Lubrication Oil Recharge (L)	1.2	1.6	1.6	2.8	2.8
最大工作压力 Maximum Operating Pressure (MPa)	高压侧 High Pressure Side	3			
	低压侧 Low Pressure Side	2			
重量 Weight (kg)	28	38	38	66	66

注: 蒸发5.0°C, 冷凝55.0°C, 过热11.1K, 过冷8.3K, 环温35.0°C。
Note: Evaporating Temperature 5.0°C, Condensing Temperature 55.0°C, Superheating 11.1K, Subcooling 8.3K, Ambient Temperature 35.0°C.

R515B WW 不带喷气增焓 W/O EVI

技术参数 Specifications

技术参数 SPECIFICATIONS

型号 Model	WW280KB-TFD-GN1	WW360KB-TFD-GN1	WW470KB-TWD-GN1	WW600KB-TWD-GN1
电制 Motor Power	380-420V/3~/50Hz or 460V/3~/60Hz			
名义功率 Nominal Power (HP)	12	15	20	25
排量 Displacement (cc/Rev)	190.8	248.9	325	400
制冷剂 Refrigerant	R515B			
名义制热量 Nominal Capacity (W)	21215	27675	36137	44476
名义输入功率 Nominal Power (W)	5135	6698	8746	10764
名义工况能效比 COP (W/W)	4.13	4.13	4.13	4.13
名义工况电流 Nominal Operating Current (A)	9.2	12.0	15.7	19.3
堵转电流 LRA (A)	120	149	290	290
最大运行电流 MOC (A)	20	26	33.9	52
曲轴箱加热器功率 Crankcase Heater (W)	90			
接管尺寸 Fitting ID Size (mm)	排气管 Dis. Tube	22.37-22.51		28.81-28.95
	吸气管 Suc. Tube	34.97-35.10		34.97-35.10
外形尺寸 Dimension (mm)	长(L)	281.4		337.34
	宽(W)	273.7		333.77
	高(H)	523.7		649.7
底脚安装尺寸(孔径) Mounting Dim.(Dia.) (mm)	190.5x190.5(8.5)			
润滑油类型 Lubrication Oil	POE			
润滑油初次充注量 Lubrication Oil Initial Charge (L)	3.2	3.2	5	5
润滑油重新充注量 Lubrication Oil Recharge (L)	3	3	4.8	4.8
最大工作压力 Maximum Operating Pressure (MPa)	高压侧 High Pressure Side	3		
	低压侧 Low Pressure Side	2		
重量 Weight (kg)	66	66	92	92

注: 蒸发5.0°C, 冷凝55.0°C, 过热11.1K, 过冷8.3K, 环温35.0°C。
Note: Evaporating Temperature 5.0°C, Condensing Temperature 55.0°C, Superheating 11.1K, Subcooling 8.3K, Ambient Temperature 35.0°C.

技术参数 Specifications

WW R515B 带喷气增焓 EVI

技术参数 SPECIFICATIONS

型号 Model	WW70KB-TFD-GV1	WW120KB-TFD-GV1	WW160KB-TFD-GV1	WW190KB-TFD-GV1	WW240KB-TFD-GV1
电制 Motor Power	380-420V/3~/50Hz or 460V/3~/60Hz				
名义功率 Nominal Power (HP)	3	5	7	8	10
排量 Displacement (cc/Rev)	50.6	84.5	108	127	166.1
制冷剂 Refrigerant	R515B				
名义制热量 Nominal Capacity (W)	6148	10266	13121	15430	20180
名义输入功率 Nominal Power (W)	1490	2488	3180	3739	4890
名义工况能效比 COP (W/W)	4.13	4.13	4.13	4.13	4.13
名义工况电流 Nominal Operating Current (A)	2.7	4.4	5.7	6.7	8.7
堵转电流 LRA (A)	45	85	85	120	120
最大运行电流 MOC (A)	6.1	10.2	13	15.3	20
曲轴箱加热器功率 Crankcase Heater (W)	70		90		
接管尺寸 Fitting ID Size (mm)	排气管 Dis. Tube	12.94-13.10		22.37-22.51	
	吸气管 Suc. Tube	22.37-22.51		34.97-35.10	
外形尺寸 Dimension (mm)	长(L)	244.4	233.63	281.4	
	宽(W)	230.5	230.5	273.7	
	高(H)	403.4	442.7	523.7	
底脚安装尺寸(孔径) Mounting Dim.(Dia.) (mm)	190.5x190.5(9.0)			190.5x190.5(8.5)	
润滑油类型 Lubrication Oil	POE				
润滑油初次充注量 Lubrication Oil Initial Charge (L)	1.4	1.8	1.8	3	3
润滑油重新充注量 Lubrication Oil Recharge (L)	1.2	1.6	1.6	2.8	2.8
最大工作压力 Maximum Operating Pressure (MPa)	高压侧 High Pressure Side	3			
	低压侧 Low Pressure Side	2			
重量 Weight (kg)	28	38	38	66	66

注: 蒸发5.0°C, 冷凝55.0°C, 过热11.1K, 过冷8.3K, 环温35.0°C, EVI 打开
Note: Evaporating Temperature 5.0°C, Condensing Temperature 55.0°C, Superheating 11.1K, Subcooling 8.3K, Ambient Temperature 35.0°C, EVI open

R515B WW 带喷气增焓 EVI

技术参数 Specifications

技术参数 SPECIFICATIONS

型号 Model	WW280KB-TFD-GV1	WW360KB-TFD-GV1	WW470KB-TWD-GV1	WW600KB-TWD-GV1
电制 Motor Power	380-420V/3~/50Hz or 460V/3~/60Hz			
名义功率 Nominal Power (HP)	12	15	20	25
排量 Displacement (cc/Rev)	190.8	248.9	325	400
制冷剂 Refrigerant	R515B			
名义制热量 Nominal Capacity (W)	23181	30240	39486	48598
名义输入功率 Nominal Power (W)	5617	7328	9569	11777
名义工况能效比 COP (W/W)	4.13	4.13	4.13	4.13
名义工况电流 Nominal Operating Current (A)	10.0	13.1	17.1	21.1
堵转电流 LRA (A)	120	149	290	290
最大运行电流 MOC (A)	23	30	39.2	52
曲轴箱加热器功率 Crankcase Heater (W)	90			
接管尺寸 Fitting ID Size (mm)	排气管 Dis. Tube	22.37-22.51		28.81-28.95
	吸气管 Suc. Tube	34.97-35.10		34.97-35.10
外形尺寸 Dimension (mm)	长(L)	281.4		337.34
	宽(W)	273.7		333.77
	高(H)	523.7		649.7
底脚安装尺寸(孔径) Mounting Dim.(Dia.) (mm)	190.5x190.5(8.5)			
润滑油类型 Lubrication Oil	POE			
润滑油初次充注量 Lubrication Oil Initial Charge (L)	3.2	3.2	5	5
润滑油重新充注量 Lubrication Oil Recharge (L)	3	3	4.8	4.8
最大工作压力 Maximum Operating Pressure (MPa)	高压侧 High Pressure Side	3		
	低压侧 Low Pressure Side	2		
重量 Weight (kg)	66	66	92	92

注: 蒸发5.0°C, 冷凝55.0°C, 过热11.1K, 过冷8.3K, 环温35.0°C, EVI 打开
Note: Evaporating Temperature 5.0°C, Condensing Temperature 55.0°C, Superheating 11.1K, Subcooling 8.3K, Ambient Temperature 35.0°C, EVI open

制热量

Heating Capacity

WW

R515B

不带喷气增焓 W/O EVI

R515B

WW

带喷气增焓 EVI

制热量

Heating Capacity

制热量 HEATING CAPACITY

型号Model	项目Item (kW)	Tc\Te	-5°C	0°C	5°C	10°C	15°C	20°C	25°C	30°C	35°C	40°C
WW600KB-TWD-GN1	Q	100°C				35.19	39.78	45.59	52.71	61.21	71.18	82.65
	P					20.89	21.9	22.95	24.01	25.1	26.21	27.35
	Q	95°C				36.43	41.74	48.31	56.23	65.58	76.42	88.81
	P					19.49	20.44	21.42	22.43	23.46	24.52	25.6
	Q	90°C			33.19	37.91	43.89	51.17	59.85	69.99	81.66	94.93
	P				17.32	18.21	19.11	20.04	20.97	21.95	22.93	23.93
	Q	85°C		30.16	34.26	39.58	46.17	54.13	63.51	74.39	86.85	100.94
	P			15.4	16.2	17.03	17.87	18.74	19.62	20.52	21.44	22.37
	Q	80°C	27.53	30.94	35.53	41.38	48.57	57.15	67.19	78.76	91.96	106.84
	P			13.69	14.42	15.17	15.94	16.75	17.55	18.37	19.2	20.06
	Q	75°C	28.06	31.9	36.95	43.29	51.01	60.15	70.81	83.04	96.94	112.54
	P			12.86	13.53	14.24	14.96	15.69	16.42	17.2	17.97	18.74
	Q	70°C	28.8	32.99	38.46	45.24	53.44	63.13	74.34	87.18	101.71	118.01
	P			12.1	12.73	13.39	14.05	14.72	15.4	16.09	16.79	17.5
	Q	65°C	29.67	34.18	40	47.2	55.83	65.99	77.73	91.14	106.28	123.21
	P			11.43	12	12.6	13.19	13.82	14.43	15.06	15.7	16.34
	Q	60°C	30.63	35.42	41.56	49.1	58.14	68.73	80.95	94.87	110.55	128.08
	P			10.8	11.33	11.88	12.42	12.97	13.53	14.09	14.66	15.24
	Q	55°C	31.64	36.66	43.05	50.91	60.3	71.27	83.92	98.3	114.5	
	P			10.24	10.72	11.2	11.68	12.18	12.68	13.18	13.68	14.17
	Q	50°C	32.66	37.85	44.47	52.6	62.27	73.6	86.62	101.44		
	P			9.74	10.16	10.57	11.01	11.44	11.86	12.29	12.73	
	Q	45°C	33.62	38.96	45.75	54.08	64.03	75.63	89			
	P			9.26	9.63	10	10.37	10.72	11.09	11.44		
	Q	40°C	34.49	39.9	46.83	55.33	65.49	77.35				
	P			8.81	9.13	9.43	9.74	10.04	10.33			
	Q	35°C	35.21	40.67	47.68	56.31	66.61					
	P			8.39	8.63	8.89	9.13	9.37				
Q	30°C	35.74	41.21	48.26	56.95							
P			7.97	8.16	8.36	8.53						

注：冷凝器出口过冷度8.3K, 过热度11.1K
 Note: Condenser Outlet Subcooling 8.3K, Subheating 11.1K

制热量 HEATING CAPACITY

型号Model	项目Item (kW)	Tc\Te	-5°C	0°C	5°C	10°C	15°C	20°C	25°C	30°C	35°C	40°C
WW70KB-TFD-GV1	Q	100°C	4.12	4.8	5.53	6.27	7.08	7.98	8.98	10.91	12.48	14.26
	P		2.96	3.11	3.26	3.43	3.54	3.63	3.72	3.79	3.86	3.93
	Q	95°C	4.19	4.87	5.61	6.36	7.19	8.1	9.12	11.08	12.67	14.47
	P		2.75	2.89	3.04	3.14	3.24	3.33	3.41	3.47	3.54	3.6
	Q	90°C	4.25	4.94	5.69	6.46	7.3	8.22	9.26	11.25	12.87	14.69
	P		2.52	2.65	2.79	2.88	2.97	3.06	3.13	3.19	3.25	3.3
	Q	85°C	4.31	5.02	5.78	6.56	7.41	8.35	9.4	11.42	13.06	14.92
	P		2.31	2.43	2.56	2.64	2.73	2.81	2.87	2.93	2.98	3.03
	Q	80°C	4.38	5.09	5.82	6.62	7.49	8.47	9.55	11.59	13.26	15.15
	P		2.12	2.23	2.31	2.39	2.47	2.54	2.59	2.63	2.68	2.73
	Q	75°C	4.45	5.13	5.87	6.69	7.59	8.6	9.73	11.77	13.46	15.38
	P		1.95	2.02	2.1	2.17	2.24	2.3	2.34	2.39	2.44	2.48
	Q	70°C	4.48	5.17	5.93	6.77	7.7	8.75	9.93	11.95	13.67	15.61
	P		1.77	1.84	1.92	1.98	2.04	2.09	2.13	2.16	2.19	2.22
	Q	65°C	4.52	5.22	5.99	6.86	7.82	8.92	10.15	12.13	13.88	15.85
	P		1.62	1.69	1.75	1.82	1.87	1.91	1.94	1.97	2	2.03
	Q	60°C	4.56	5.27	6.07	6.96	7.97	9.1	10.39	12.32	14.09	16.09
	P		1.48	1.55	1.61	1.67	1.72	1.76	1.78	1.81	1.83	1.85
	Q	55°C	4.6	5.33	6.15	7.07	8.12	9.31	10.65	12.5	14.3	
	P		1.36	1.43	1.49	1.55	1.59	1.62	1.64	1.67	1.69	
	Q	50°C	4.64	5.39	6.24	7.2	8.29	9.53	10.94	12.69		
	P		1.25	1.32	1.38	1.43	1.48	1.51	1.52	1.54		
	Q	45°C	4.69	5.46	6.34	7.34	8.48	9.78	11.24			
	P		1.15	1.22	1.28	1.34	1.38	1.41	1.42			
	Q	40°C	4.74	5.54	6.46	7.5	8.69	10.04				
	P		1.06	1.13	1.19	1.25	1.29	1.32				
	Q	35°C	4.8	5.63	6.58	7.67	8.92					
	P		0.97	1.04	1.1	1.16	1.21					
Q	30°C	4.87	5.73	6.72	7.87							
P		0.87	0.95	1.02	1.08							
Q	100°C	6.88	8.01	9.23	10.47	11.82	13.33	15	18.22	20.85	23.81	
P		4.94	5.19	5.45	5.72	5.9	6.07	6.21	6.32	6.44	6.56	
Q	95°C	6.99	8.13	9.37	10.63	12	13.53	15.23	18.5	21.16	24.17	
P		4.59	4.82	5.07	5.25	5.41	5.57	5.7	5.8	5.91	6.01	
Q	90°C	7.1	8.25	9.51	10.79	12.19	13.73	15.46	18.78	21.49	24.54	
P		4.21	4.43	4.65	4.81	4.97	5.11	5.22	5.32	5.42	5.52	
Q	85°C	7.2	8.38	9.65	10.95	12.37	13.94	15.69	19.07	21.82	24.91	
P		3.86	4.06	4.27	4.42	4.56	4.69	4.79	4.89	4.97	5.06	
Q	80°C	7.31	8.51	9.72	11.05	12.51	14.14	15.96	19.36	22.15	25.29	
P		3.54	3.72	3.86	4	4.12	4.23	4.33	4.4	4.48	4.55	
Q	75°C	7.42	8.57	9.81	11.17	12.68	14.36	16.25	19.65	22.48	25.68	
P		3.25	3.38	3.51	3.63	3.74	3.84	3.91	3.99	4.07	4.14	
Q	70°C	7.48	8.64	9.9	11.3	12.86	14.61	16.58	19.95	22.83	26.07	
P		2.96	3.08	3.2	3.31	3.41	3.49	3.55	3.61	3.66	3.71	
Q	65°C	7.54	8.71	10.01	11.45	13.07	14.89	16.94	20.26	23.17	26.47	
P		2.7	2.82	2.93	3.03	3.12	3.19	3.25	3.3	3.35	3.4	
Q	60°C	7.61	8.8	10.13	11.62	13.3	15.2	17.35	20.57	23.53	26.87	
P		2.47	2.59	2.7	2.79	2.87	2.94	2.98	3.01	3.05	3.09	
Q	55°C	7.68	8.9	10.27	11.81	13.56	15.54	17.79	20.88	23.89		
P		2.27	2.38	2.49	2.58	2.65	2.71	2.75	2.78	2.82		
Q	50°C	7.75	9	10.42	12.02	13.85	15.92	18.26	21.2			
P		2.09	2.2	2.31	2.39	2.47	2.52	2.54	2.57			
Q	45°C	7.83	9.12	10.59	12.26	14.16	16.33	18.78				
P		1.92	2.04	2.14	2.23	2.3	2.35	2.37				
Q	40°C	7.92	9.25	10.78	12.52	14.51	16.77					
P		1.77	1.88	1.99	2.08	2.15	2.2					
Q	35°C	8.02	9.41	11	12.82	14.89						
P		1.61	1.73	1.84	1.94	2.01						
Q	30°C	8.13	9.57	11.23	13.14							
P		1.45	1.59	1.7	1.8							

注：冷凝器出口过冷度8.3K, 过热度11.1K
 Note: Condenser Outlet Subcooling 8.3K, Subheating 11.1K

制热量

Heating Capacity

制热量 HEATING CAPACITY

型号Model	项目Item (kW)	Tc\Te	R515B																				
			-5°C	0°C	5°C	10°C	15°C	20°C	25°C	30°C	35°C	40°C											
WW160KB-TFD-GV1	Q	100°C	8.8	10.24	11.79	13.38	15.11	17.03	19.17	23.29	26.65	30.43	P	6.32	6.63	6.96	7.31	7.55	7.75	7.94	8.08	8.23	8.38
	Q		95°C	8.93	10.39	11.97	13.58	15.34	17.29	19.46	23.65	27.05	30.89	P	5.87	6.17	6.48	6.71	6.92	7.12	7.28	7.42	7.55
	Q	90°C		9.07	10.55	12.15	13.79	15.58	17.55	19.76	24.01	27.46	31.36	P	5.38	5.66	5.95	6.15	6.35	6.53	6.68	6.8	6.93
	Q		85°C	9.21	10.71	12.34	14	15.81	17.82	20.06	24.37	27.88	31.84	P	4.94	5.19	5.46	5.65	5.83	5.99	6.13	6.24	6.36
	Q	80°C		9.35	10.87	12.43	14.12	15.99	18.07	20.39	24.74	28.31	32.33	P	4.53	4.76	4.94	5.11	5.27	5.41	5.53	5.62	5.72
	Q		75°C	9.49	10.96	12.54	14.28	16.2	18.35	20.77	25.12	28.74	32.82	P	4.16	4.32	4.49	4.64	4.78	4.9	5	5.1	5.2
	Q	70°C		9.56	11.04	12.66	14.44	16.44	18.68	21.19	25.5	29.18	33.32	P	3.78	3.94	4.09	4.23	4.36	4.46	4.54	4.61	4.67
	Q		65°C	9.64	11.14	12.79	14.64	16.7	19.03	21.66	25.89	29.62	33.83	P	3.45	3.6	3.74	3.87	3.99	4.08	4.15	4.21	4.28
	Q	60°C		9.72	11.25	12.95	14.85	17	19.43	22.17	26.29	30.07	34.34	P	3.16	3.31	3.45	3.56	3.67	3.75	3.81	3.85	3.9
	Q		55°C	9.81	11.37	13.12	15.1	17.33	19.86	22.73	26.69	30.53	P	2.91	3.05	3.18	3.3	3.39	3.47	3.51	3.56	3.61	
	Q	50°C		9.9	11.51	13.32	15.37	17.7	20.34	23.34	27.09	P	2.67	2.82	2.95	3.06	3.15	3.22	3.25	3.28			
	Q		45°C	10.01	11.66	13.53	15.67	18.1	20.87	P	2.46	2.6	2.74	2.85	2.94	3	3.03						
	Q	40°C		10.12	11.83	13.78	16.01	18.55	21.44	P	2.26	2.41	2.54	2.66	2.75	2.81							
	Q		35°C	10.25	12.02	14.05	16.38	19.04	P	2.06	2.22	2.36	2.48	2.57									
	Q	30°C		10.39	12.23	14.35	16.79	P	1.86	2.03	2.17	2.3											
	Q		100°C	10.35	12.04	13.87	15.73	17.77	20.03	22.54	27.39	31.33	35.78	P	7.43	7.8	8.19	8.6	8.87	9.12	9.33	9.51	9.68
	Q	95°C		10.51	12.22	14.08	15.97	18.04	20.33	22.88	27.81	31.81	36.33	P	6.9	7.25	7.62	7.99	8.14	8.37	8.56	8.72	8.88
	Q		90°C	10.66	12.4	14.29	16.21	18.32	20.64	23.23	28.23	32.29	36.88	P	6.33	6.65	7	7.24	7.46	7.67	7.85	8	8.15
	Q	85°C		10.83	12.59	14.51	16.46	18.59	20.96	23.58	28.66	32.79	37.44	P	5.81	6.1	6.42	6.64	6.85	7.04	7.2	7.34	7.48
	Q		80°C	10.99	12.79	14.61	16.61	18.81	21.25	23.98	29.09	33.29	38.01	P	5.33	5.6	5.81	6.01	6.19	6.36	6.5	6.61	6.73
	Q	75°C		11.16	12.88	14.74	16.79	19.05	21.58	24.43	29.54	33.79	38.59	P	4.89	5.08	5.28	5.45	5.62	5.77	5.88	6	6.11
	Q		70°C	11.25	12.99	14.88	16.99	19.33	21.96	24.92	29.99	34.31	39.18	P	4.45	4.63	4.81	4.97	5.12	5.25	5.34	5.42	5.5
	Q	65°C		11.34	13.1	15.04	17.21	19.64	22.38	25.47	30.45	34.83	39.78	P	4.06	4.24	4.4	4.56	4.69	4.8	4.88	4.95	5.03
	Q		60°C	11.43	13.23	15.23	17.47	19.99	22.85	26.07	30.91	35.36	40.38	P	3.72	3.89	4.05	4.19	4.32	4.41	4.47	4.53	4.59
Q	55°C	11.54		13.37	15.43	17.75	20.38	23.36	26.73	31.38	35.9	P	3.42	3.58	3.74	3.88	3.99	4.08	4.13	4.18	4.24		
Q		50°C	11.64	13.53	15.66	18.07	20.81	23.92	27.45	31.86	P	3.14	3.31	3.46	3.6	3.71	3.79	3.82	3.86				
Q	45°C		11.77	13.71	15.91	18.43	21.29	24.54	28.22	P	2.89	3.06	3.22	3.35	3.46	3.53	3.56						
Q		40°C	11.9	13.91	16.21	18.82	21.81	25.21	P	2.66	2.83	2.99	3.13	3.23	3.3								
Q	35°C		12.05	14.14	16.53	19.26	22.38	P	2.42	2.61	2.77	2.91	3.03										
Q		30°C	12.22	14.38	16.88	19.74	P	2.18	2.38	2.56	2.7												

注：冷凝器出口过冷度8.3K, 过热度11.1K
Note: Condenser Outlet Subcooling 8.3K, Subheating 11.1K

WW

R515B

带喷气增焓 EVI

R515B

WW

带喷气增焓 EVI

制热量

Heating Capacity

制热量 HEATING CAPACITY

型号Model	项目Item (kW)	Tc\Te	R515B																				
			-5°C	0°C	5°C	10°C	15°C	20°C	25°C	30°C	35°C	40°C											
WW240KB-TFD-GV1	Q	100°C	13.53	15.74	18.14	20.57	23.24	26.19	29.48	35.82	40.98	46.8	P	9.72	10.2	10.71	11.24	11.6	11.93	12.21	12.43	12.66	12.89
	Q		95°C	13.74	15.98	18.41	20.89	23.6	26.59	29.93	36.37	41.6	47.51	P	9.02	9.48	9.97	10.32	10.64	10.94	11.2	11.4	11.61
	Q	90°C		13.95	16.22	18.69	21.2	23.96	26.99	30.38	36.92	42.24	48.24	P	8.27	8.7	9.15	9.46	9.76	10.04	10.27	10.46	10.66
	Q		85°C	14.16	16.47	18.97	21.53	24.32	27.41	30.84	37.48	42.88	48.97	P	7.59	7.98	8.4	8.68	8.96	9.21	9.42	9.6	9.78
	Q	80°C		14.37	16.72	19.11	21.72	24.6	27.79	31.36	38.05	43.54	49.72	P	6.97	7.32	7.59	7.86	8.1	8.32	8.5	8.65	8.8
	Q		75°C	14.59	16.85	19.28	21.96	24.92	28.23	31.95	38.63	44.2	50.47	P	6.39	6.65	6.9	7.13	7.35	7.54	7.69	7.84	7.99
	Q	70°C		14.71	16.98	19.47	22.22	25.28	28.72	32.59	39.22	44.87	51.24	P	5.82	6.05	6.29	6.5	6.7	6.86	6.99	7.09	7.19
	Q		65°C	14.83	17.13	19.67	22.51	25.69	29.27	33.31	39.82	45.55	52.03	P	5.31	5.54	5.76	5.96	6.13	6.28	6.38	6.48	6.58
	Q	60°C		14.96	17.3	19.91	22.84	26.15	29.88	34.1	40.43	46.25	52.81	P	4.86	5.09	5.3	5.48	5.65	5.77	5.85	5.93	6
	Q		55°C	15.09	17.49	20.18	23.22	26.66	30.55	34.96	41.04	46.95	P	4.47	4.68	4.89	5.07	5.22	5.33	5.4	5.47	5.55	
	Q	50°C		15.23	17.7	20.48	23.64	27.22	31.28	35.9	41.67	P	4.11	4.33	4.53	4.7	4.85	4.95	5	5.05			
	Q		45°C	15.39	17.93	20.81	24.1	27.84	32.09	36.91	P	3.78	4	4.21	4.38	4.52	4.62	4.66					
	Q	40°C		15.57	18.19	21.19	24.62	28.53	32.97	P	3.48	3.7	3.91	4.09	4.23	4.32							
	Q		35°C	15.76	18.49	21.62	25.19	29.28	P	3.17	3.41	3.62	3.81	3.96									
	Q	30°C		15.98	18.81	22.08	25.82	P	2.86	3.12	3.34	3.54											
	Q		100°C	15.55	18.08	20.84	23.63	26.7	30.09	33.86	41.15	47.08	53.76	P	11.16	11.71	12.3	12.92	13.33	13.7	14.02	14.28	14.54
	Q	95°C		15.78	18.36	21.15	23.99	27.11	30.55	34.38	41.78	47.79	54.58	P	10.36	10.89	11.45	11.85	12.23	12.57	12.86	13.1	13.34
	Q		90°C	16.02	18.64	21.47	24.35	27.52	31.01	34.9	42.41	48.52	55.41	P	9.51	10	10.51	10.87	11.21	11.53	11.8	12.02	12.24
	Q	85°C		16.27	18.92	21.79	24.73	27.93	31.48	35.43	43.06	49.26	56.25	P	8.72	9.17	9.64	9.97	10.3	10.58	10.82	11.03	11.23
	Q		80°C	16.51	19.21	21.95	24.95	28.26	31.93	36.03	43.71	50.01	57.11	P	8	8.41	8.72	9.03	9.31	9.56	9.77	9.93	10.11
	Q	75°C		16.76	19.36	22.15	25.22	28.62	32.43	36.7	44.38	50.77	57.98	P	7.34	7.64	7.93	8.19	8.45	8.66	8.84	9.01	9.18
	Q		70°C	16.9	19.51	22.36	25.52	29.04	32.99	37.44	45.05	51.54	58.87	P	6.68	6.95	7.22	7.47	7.7	7.88	8.03	8.14	8.26
	Q	65°C		17.03	19.68	22.6	25.86	29.51	33.62	38.26	45.74	52.33	59.76	P	6.1	6.36	6.62	6.85	7.04	7.21	7.33	7.44	7.56
	Q		60°C	17.18	19.88	22.87	26.24	30.03	34.33	39.17	46.44	53.12	60.67	P	5.59	5.84	6.09	6.29	6.49	6.63	6.72	6.81	6.89

制热量

Heating Capacity

制热量 HEATING CAPACITY

型号Model	项目Item (kW)	Tc\Te	-5°C	0°C	5°C	10°C	15°C	20°C	25°C	30°C	35°C	40°C	
WW360KB-TFD-GV1	Q	100°C	20.28	23.59	27.18	30.83	34.83	39.25	44.17	53.68	61.41	70.13	
	P		14.56	15.28	16.05	16.85	17.39	17.87	18.29	18.63	18.97	19.31	
	Q	95°C	20.59	23.95	27.59	31.3	35.36	39.85	44.85	54.5	62.34	71.2	
	P		13.52	14.21	14.94	15.46	15.95	16.4	16.78	17.09	17.4	17.71	
	Q	90°C	20.9	24.31	28.01	31.77	35.9	40.45	45.53	55.33	63.29	72.28	
	P		12.4	13.04	13.71	14.18	14.63	15.04	15.39	15.68	15.97	16.25	
	Q	85°C	21.22	24.68	28.43	32.26	36.44	41.07	46.22	56.17	64.26	73.38	
	P		11.38	11.96	12.58	13.01	13.43	13.8	14.12	14.39	14.65	14.91	
	Q	80°C	21.54	25.06	28.84	32.55	36.86	41.65	47	57.02	65.24	74.5	
	P		10.44	10.97	11.38	11.78	12.14	12.47	12.74	12.96	13.19	13.41	
	Q	75°C	21.87	25.25	28.89	32.9	37.34	42.3	47.87	57.89	66.23	75.63	
	P		9.58	9.96	10.34	10.69	11.02	11.3	11.53	11.75	11.98	12.2	
	Q	70°C	22.04	25.45	29.17	33.29	37.88	43.04	48.84	58.77	67.24	76.79	
	P		8.72	9.07	9.42	9.74	10.04	10.28	10.47	10.62	10.77	10.92	
	Q	65°C	22.22	25.67	29.48	33.73	38.49	43.86	49.91	59.67	68.26	77.96	
	P		7.96	8.3	8.63	8.93	9.19	9.41	9.56	9.71	9.86	10.01	
	Q	60°C	22.41	25.93	29.84	34.23	39.18	44.78	51.1	60.58	69.3	79.14	
	P		7.29	7.62	7.94	8.21	8.46	8.65	8.77	8.88	8.99	9.11	
	Q	55°C	22.61	26.21	30.24	34.79	39.95	45.78	52.39	61.5	70.36		
	P		6.7	7.02	7.33	7.6	7.82	7.99	8.09	8.2	8.31		
	Q	50°C	22.82	26.52	30.69	35.42	40.79	46.88	53.79	62.44			
	P		6.16	6.49	6.79	7.05	7.27	7.42	7.49	7.57			
	Q	45°C	23.06	26.87	31.19	36.12	41.72	48.09	55.31				
	P		5.67	6	6.31	6.57	6.78	6.92	6.98				
	Q	40°C	23.33	27.26	31.76	36.89	42.75	49.41					
	P		5.21	5.55	5.86	6.13	6.34	6.47					
	Q	35°C	23.62	27.71	32.39	37.75	43.87						
	P		4.75	5.11	5.43	5.71	5.93						
	Q	30°C	23.95	28.19	33.08	38.69							
	P		4.28	4.67	5.01	5.3							
	WW470KB-TWD-GV1	Q	100°C	26.48	30.8	35.49	40.26	45.48	51.25	57.67	70.09	80.19	91.57
		P		19.01	19.95	20.96	22	22.71	23.33	23.88	24.33	24.77	25.21
		Q	95°C	26.89	31.27	36.03	40.87	46.17	52.03	58.56	71.16	81.4	92.97
		P		17.65	18.55	19.51	20.19	20.83	21.41	21.91	22.32	22.72	23.12
		Q	90°C	27.29	31.74	36.57	41.48	46.88	52.82	59.45	72.25	82.64	94.38
		P		16.19	17.03	17.9	18.52	19.1	19.64	20.1	20.47	20.85	21.22
Q		85°C	27.71	32.23	37.12	42.12	47.58	53.63	60.35	73.34	83.91	95.82	
P			14.86	15.62	16.43	16.99	17.54	18.02	18.44	18.79	19.13	19.47	
Q		80°C	28.13	32.72	37.4	42.5	48.13	54.38	61.37	74.45	85.19	97.28	
P			13.63	14.32	14.86	15.38	15.85	16.28	16.64	16.92	17.22	17.51	
Q		75°C	28.56	32.97	37.72	42.96	48.76	55.23	62.51	75.59	86.48	98.75	
P			12.51	13.01	13.5	13.96	14.39	14.75	15.06	15.34	15.64	15.93	
Q		70°C	28.78	33.23	38.09	43.47	49.46	56.2	63.77	76.74	87.8	100.27	
P			11.39	11.84	12.3	12.72	13.11	13.42	13.67	13.87	14.06	14.26	
Q		65°C	29.01	33.52	38.49	44.04	50.26	57.27	65.17	77.91	89.13	101.8	
P			10.39	10.84	11.27	11.66	12	12.29	12.48	12.68	12.87	13.07	
Q		60°C	29.26	33.86	38.96	44.7	51.16	58.47	66.72	79.1	90.49	103.34	
P			9.52	9.95	10.37	10.72	11.05	11.29	11.45	11.6	11.74	11.9	
Q		55°C	29.52	34.22	39.49	45.43	52.16	59.78	68.41	80.3	91.87		
P			8.75	9.17	9.57	9.92	10.21	10.43	10.56	10.71	10.85		
Q		50°C	29.8	34.63	40.07	46.25	53.26	61.21	70.24	81.53			
P			8.04	8.47	8.87	9.21	9.49	9.69	9.78	9.88			
Q		45°C	30.11	35.09	40.73	47.16	54.48	62.79	72.22				
P			7.4	7.83	8.24	8.58	8.85	9.04	9.11				
Q		40°C	30.46	35.59	41.47	48.17	55.82	64.52					
P			6.8	7.25	7.65	8	8.28	8.45					
Q		35°C	30.84	36.18	42.29	49.29	57.28						
P			6.2	6.67	7.09	7.46	7.74						
Q		30°C	31.27	36.81	43.19	50.52							
P			5.59	6.1	6.54	6.92							

注：冷凝器出口过冷度8.3K, 过热度11.1K

Note: Condenser Outlet Subcooling 8.3K, Subheating 11.1K



WW

R515B

带喷气增焓 EVI

R515B

WW

带喷气增焓 EVI

制热量

Heating Capacity

制热量 HEATING CAPACITY

型号Model	项目Item (kW)	Tc\Te	-5°C	0°C	5°C	10°C	15°C	20°C	25°C	30°C	35°C	40°C
WW600KB-TWD-GV1	Q	100°C	32.59	37.91	43.68	49.55	55.97	63.08	70.98	86.27	98.69	112.7
	P		23.4	24.56	25.79	27.08	27.95	28.72	29.39	29.94	30.49	31.03
	Q	95°C	33.09	38.49	44.34	50.3	56.83	64.04	72.08	87.59	100.18	114.42
	P		21.73	22.84	24.01	24.85	25.63	26.36	26.97	27.46	27.96	28.46
	Q	90°C	33.59	39.07	45.01	51.06	57.69	65.01	73.17	88.92	101.71	116.16
	P		19.93	20.96	22.03	22.79	23.51	24.17	24.73	25.2	25.66	26.11
	Q	85°C	34.1	39.66	45.69	51.84	58.56	66	74.28	90.27	103.27	117.93
	P		18.29	19.22	20.22	20.91	21.58	22.18	22.69	23.13	23.54	23.96
	Q	80°C	34.62	40.27	46.03	52.31	59.24	66.93	75.53	91.64	104.85	119.73
	P		16.78	17.63	18.29	18.93	19.51	20.04	20.47	20.83	21.2	21.55
	Q	75°C	35.15	40.58	46.43	52.87	60.01	67.98	76.93	93.03	106.44	121.54
	P		15.4	16.01	16.62	17.18	17.71	18.16	18.53	18.88	19.25	19.61
	Q	70°C	35.42	40.9	46.88	53.5	60.88	69.17	78.49	94.45	108.06	123.41
	P		14.01	14.58	15.14	15.65	16.13	16.52	16.83	17.07	17.31	17.55
	Q	65°C	35.71	41.25	47.38	54.21	61.86	70.49	80.21	95.89	109.7	125.29
	P		12.79	13.34	13.87	14.35	14.77	15.12	15.36	15.6	15.85	16.09
	Q	60°C	36.01	41.67	47.96	55.01	62.97	71.96	82.12	97.36	111.37	127.18
	P		11.72	12.25	12.76	13.19	13.6	13.9	14.09	14.27	14.45	14.64
	Q	55°C	36.34	42.12	48.6	55.91	64.2	73.57	84.19	98.83	113.07	
	P		10.77	11.28	11.78	12.21	12.57	12.84	13	13.18	13.35	
	Q	50°C	36.67	42.62	49.32	56.92	65.55	75.34	86.44	100.35		
	P		9.9	10.43	10.91	11.33	11.68	11.92	12.04	12.17		
	Q	45°C	37.06	43.18	50.12	58.05	67.05	77.28	88.89			
	P		9.11	9.64	10.14	10.56	10.9	11.12	11.22			
	Q	40°C	37.49	43.81	51.04	59.28	68.7	79.41				
	P		8.37	8.92	9.42	9.85	10.19	10.4				
	Q	35°C	37.96	44.53	52.05	60.67	70.5					
	P		7.63	8.21	8.73	9.18	9.53					
	Q	30°C	38.49	45.3	53.16	62.18						
	P		6.88	7.51	8.05	8.52						

注：冷凝器出口过冷度8.3K, 过热度11.1K

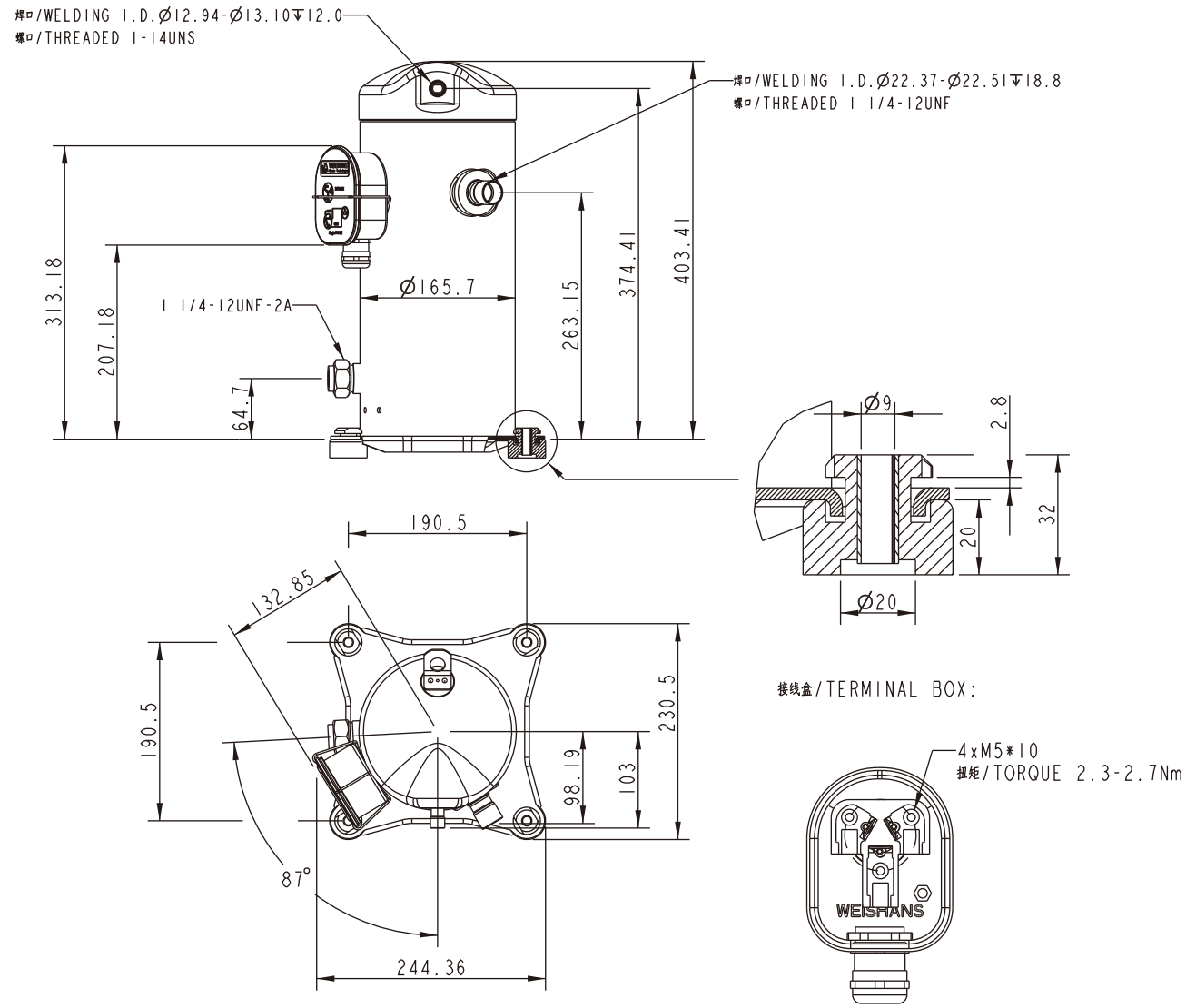
Note: Condenser Outlet Subcooling 8.3K, Subheating 11.1K

外形尺寸

Dimensional information

WW70KB

不带喷气增焓 W/O EVI



- 技术要求:
Technical requirements:
1. 未注尺寸单位Unsize unit:mm
 2. 未注尺寸公差Undimensioned tolerance: ± 3 mm
 3. 未注角度公差Angle tolerance without injection: $\pm 3^\circ$

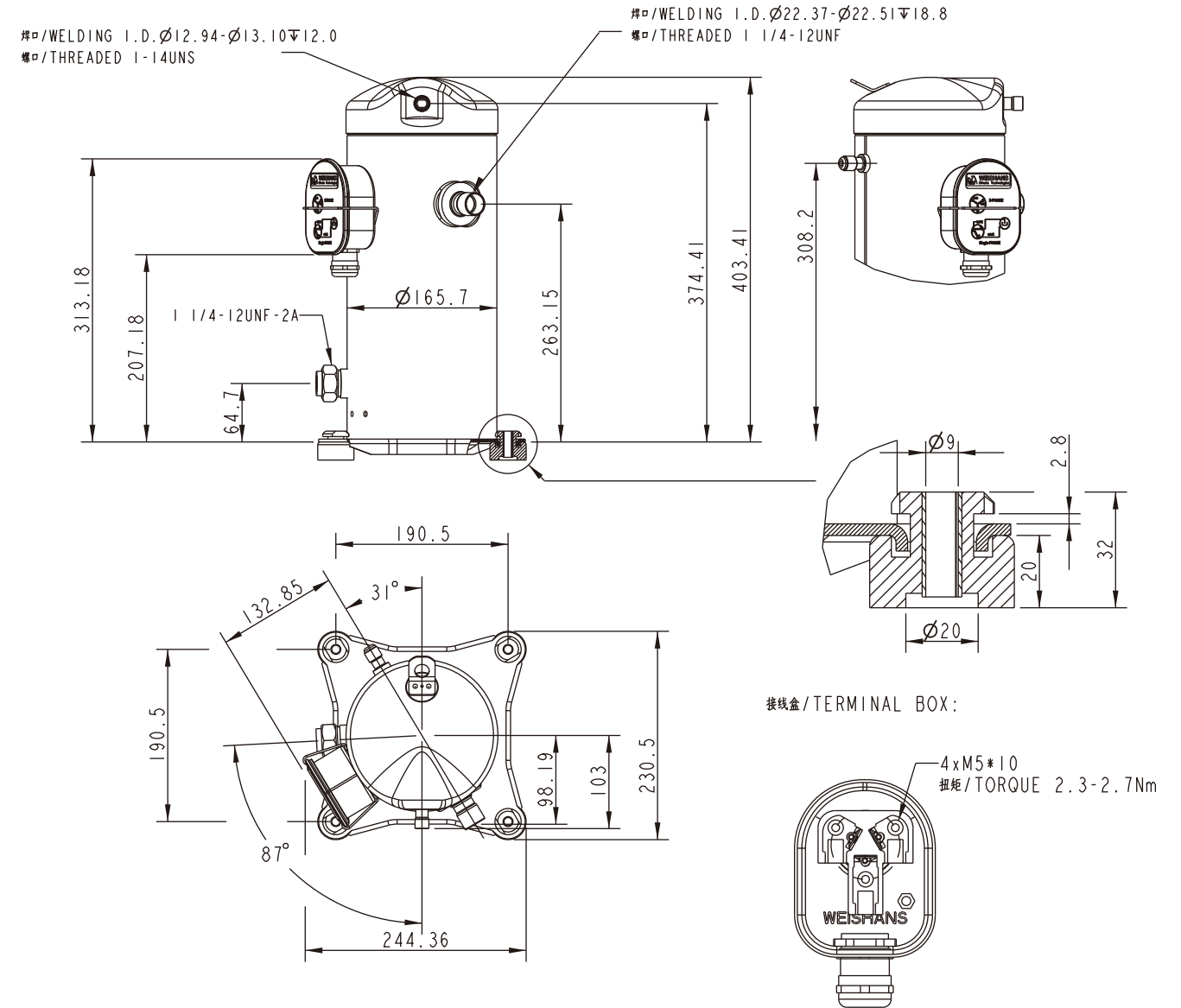
外形尺寸 DIMENSIONAL INFORMATION

外形尺寸

Dimensional information

WW70KB

带喷气增焓机型EVI



- 技术要求:
Technical requirements:
1. 未注尺寸单位Unsize unit:mm
 2. 未注尺寸公差Undimensioned tolerance: ± 3 mm
 3. 未注角度公差Angle tolerance without injection: $\pm 3^\circ$

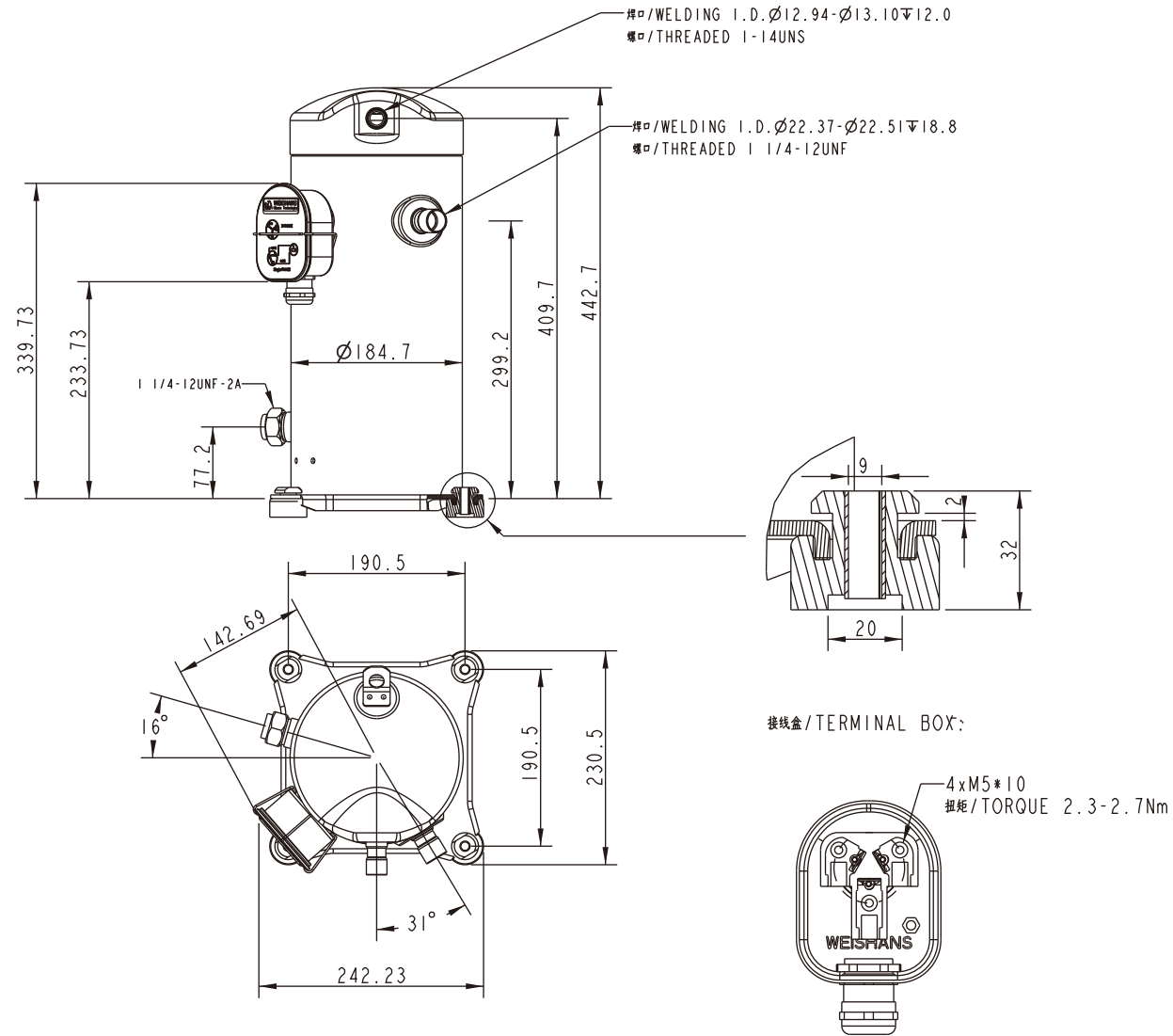
外形尺寸 DIMENSIONAL INFORMATION

外形尺寸

Dimensional information

WW120KB - WW160KB

不带喷气增焓 W/O EVI



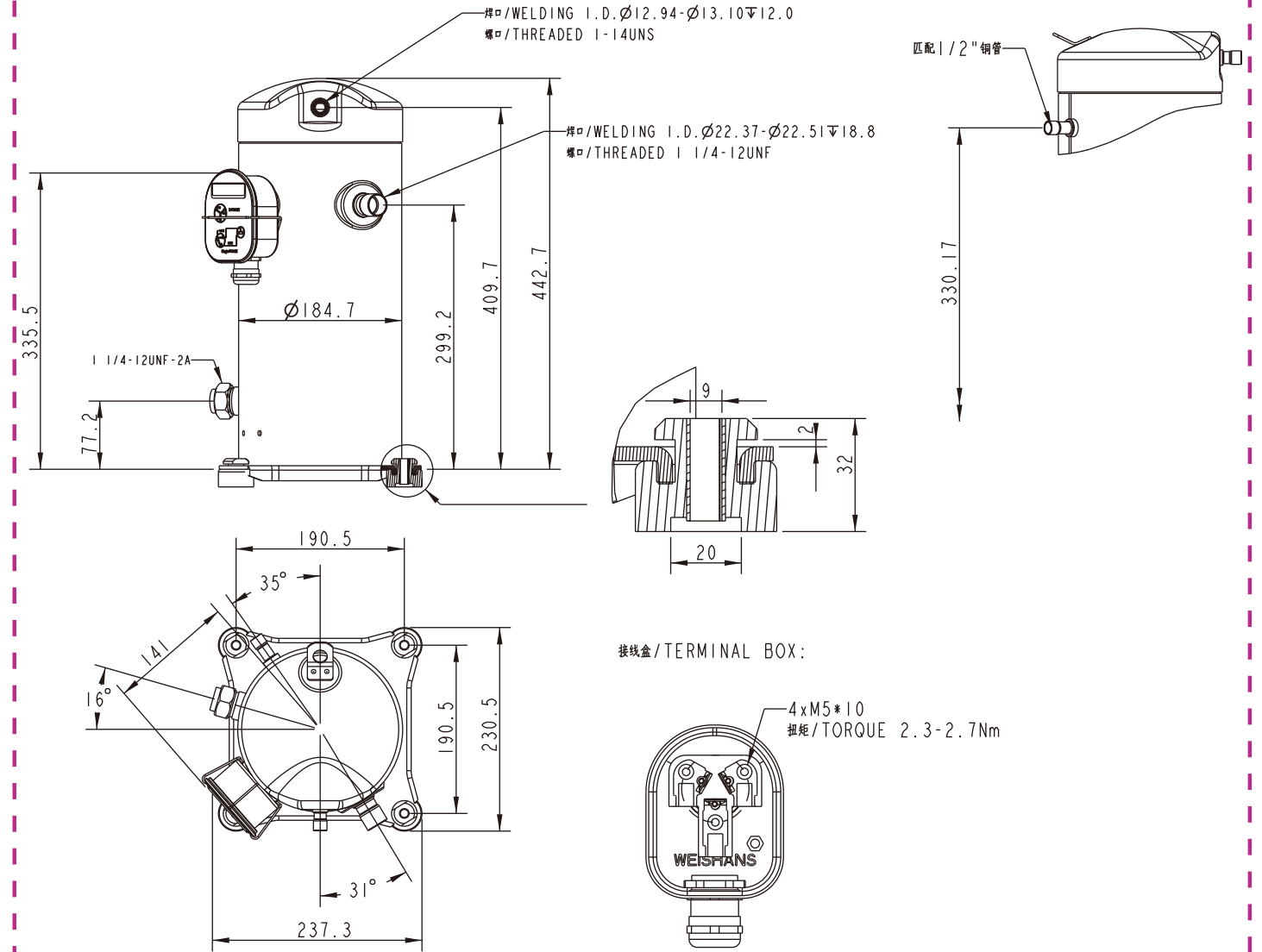
- 技术要求:
Technical requirements:
1. 未注尺寸单位: mm
 2. 未注尺寸公差: ± 3 mm
 3. 未注角度公差: $\pm 3^\circ$

WW120KB - WW160KB

带喷气增焓机型EVI

外形尺寸

Dimensional information



- 技术要求:
Technical requirements:
1. 未注尺寸单位: mm
 2. 未注尺寸公差: ± 3 mm
 3. 未注角度公差: $\pm 3^\circ$

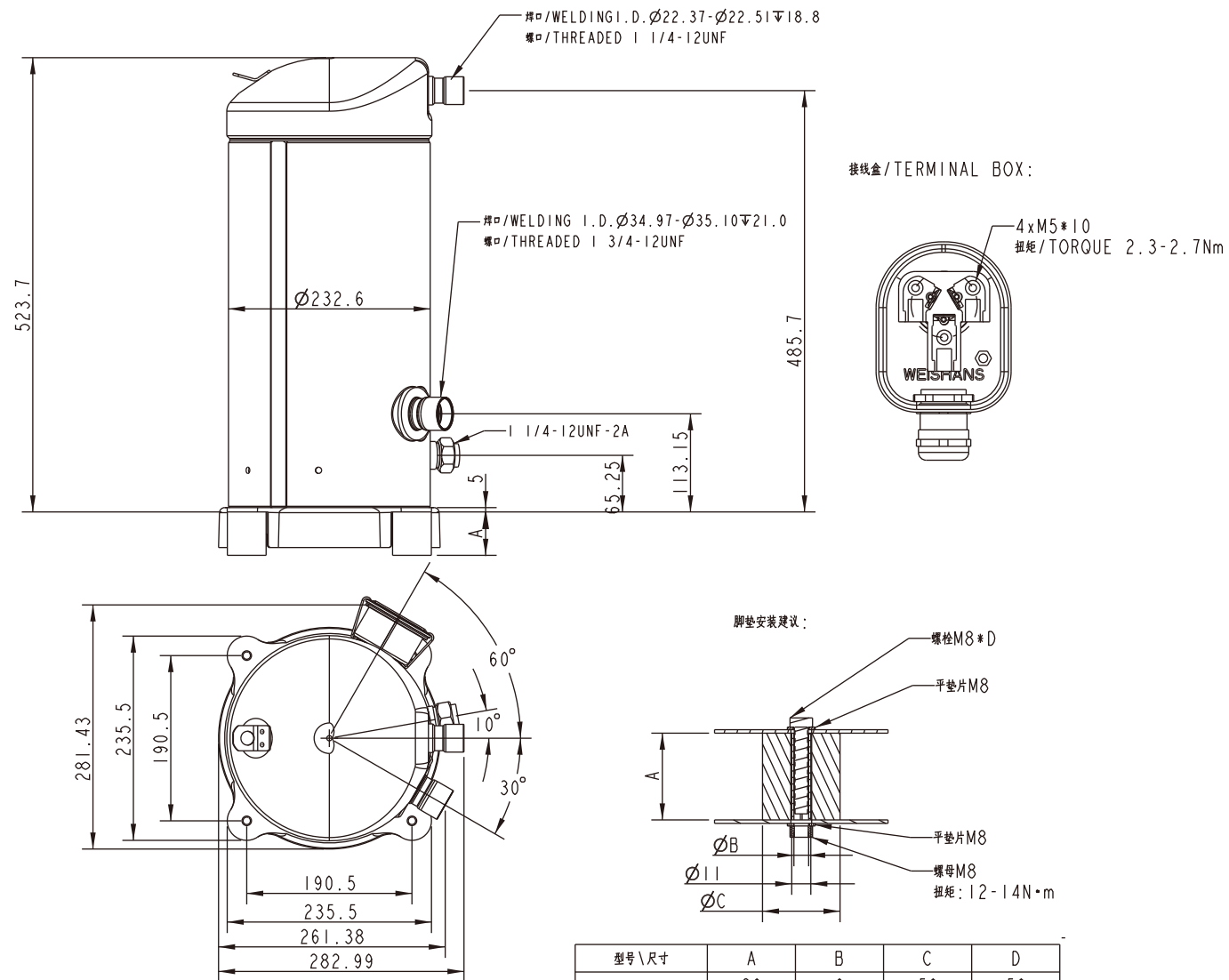
外形尺寸

Dimensional information

WW190KB - WW360KB

不带喷气增焓 W/O EVI

外形尺寸 DIMENSIONAL INFORMATION



- 技术要求:
 Technical requirements:
 1. 未注尺寸单位Unsize unit:mm
 2. 未注尺寸公差Unsize tolerance:±3mm
 3. 未注角度公差Angle tolerance without injection:±3°

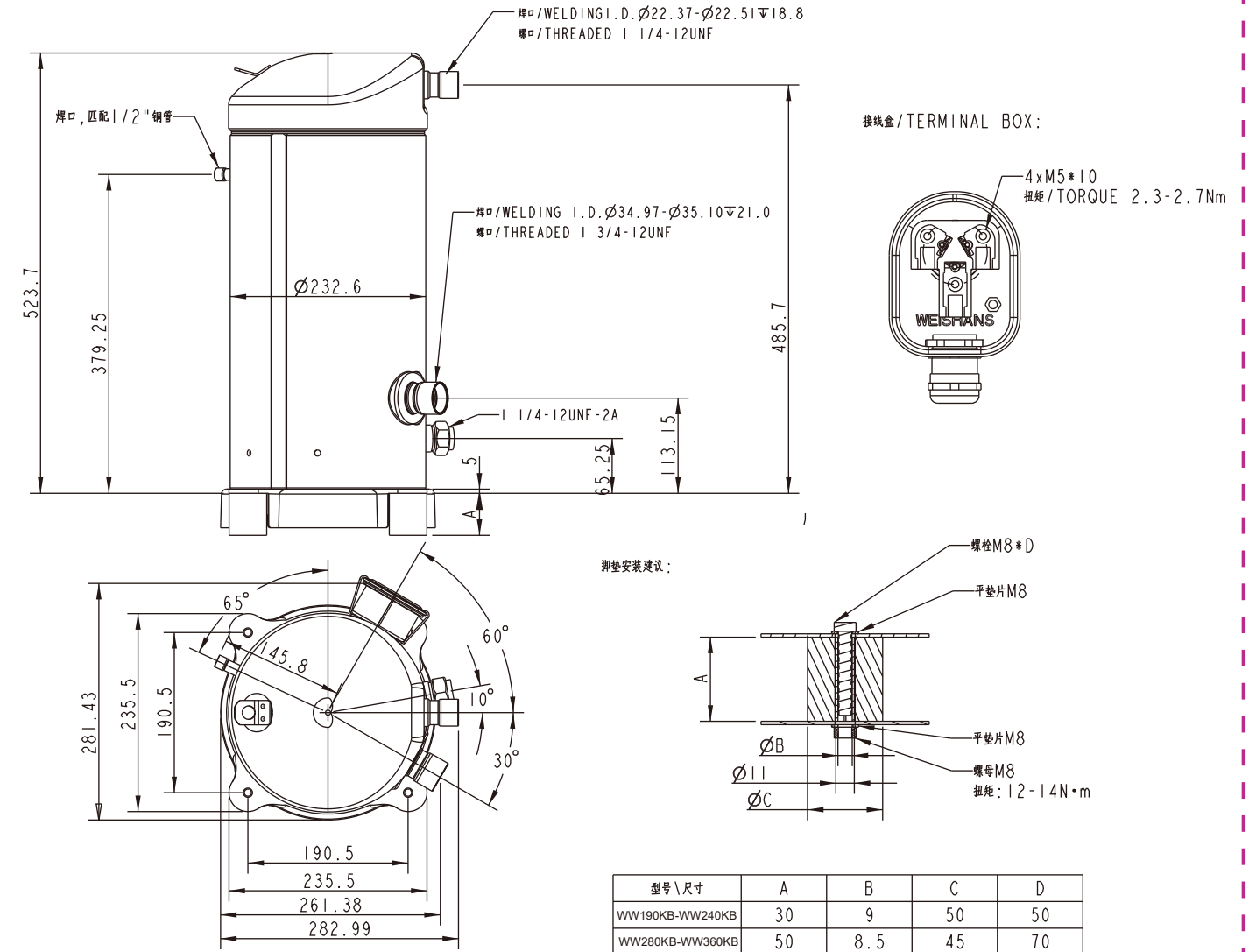
外形尺寸

Dimensional information

WW190KB - WW360KB

带喷气增焓机型EVI

外形尺寸 DIMENSIONAL INFORMATION



- 技术要求:
 Technical requirements:
 1. 未注尺寸单位Unsize unit:mm
 2. 未注尺寸公差Unsize tolerance:±3mm
 3. 未注角度公差Angle tolerance without injection:±3°

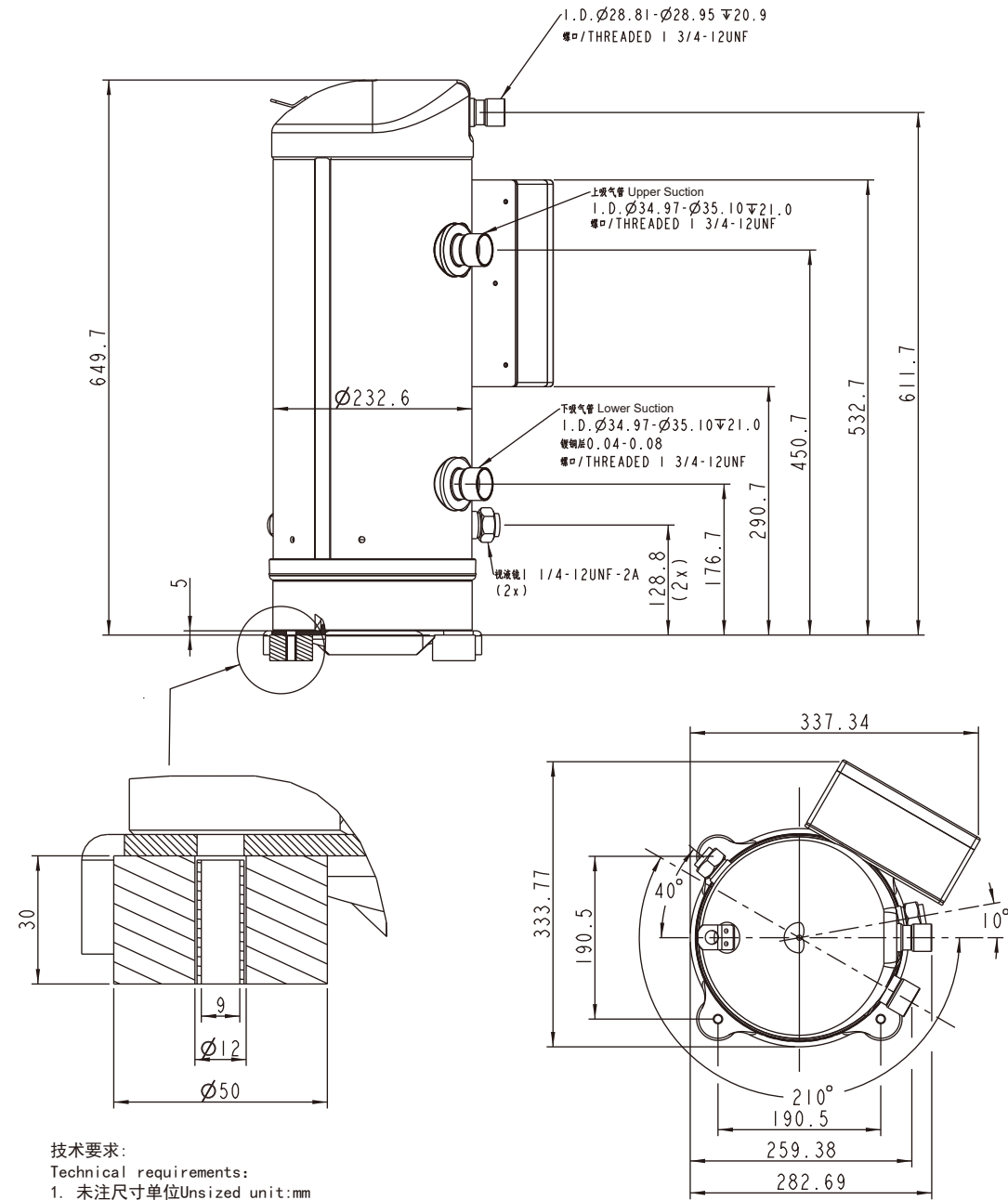
外形尺寸

Dimensional information

WW470KB - WW600KB

不带喷气增焓 W/O EVI

外形尺寸 DIMENSIONAL INFORMATION



- 技术要求:
Technical requirements:
1. 未注尺寸单位Unsize unit:mm
 2. 未注尺寸公差Unimensioned tolerance:±3mm
 3. 未注角度公差Angle tolerance without injection:±3°

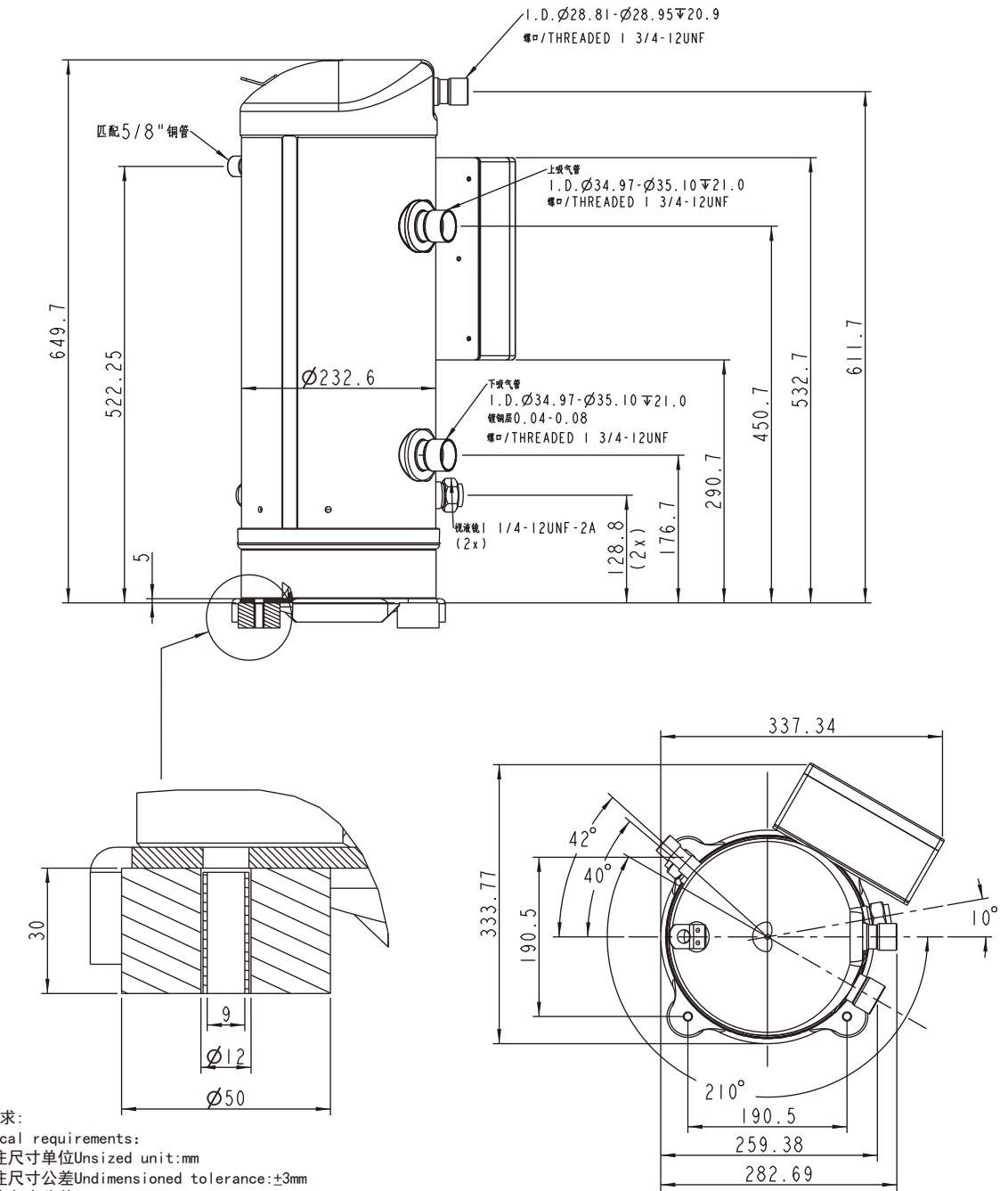
外形尺寸

Dimensional information

WW470KB - WW600KB

带喷气增焓机型EVI

外形尺寸 DIMENSIONAL INFORMATION



- 技术要求:
Technical requirements:
1. 未注尺寸单位Unsize unit:mm
 2. 未注尺寸公差Unimensioned tolerance:±3mm
 3. 未注角度公差Angle tolerance without injection:±3°